

Byron Avenue

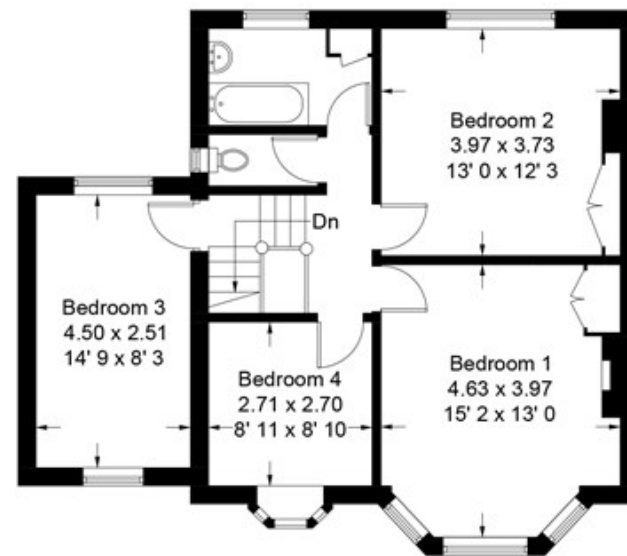
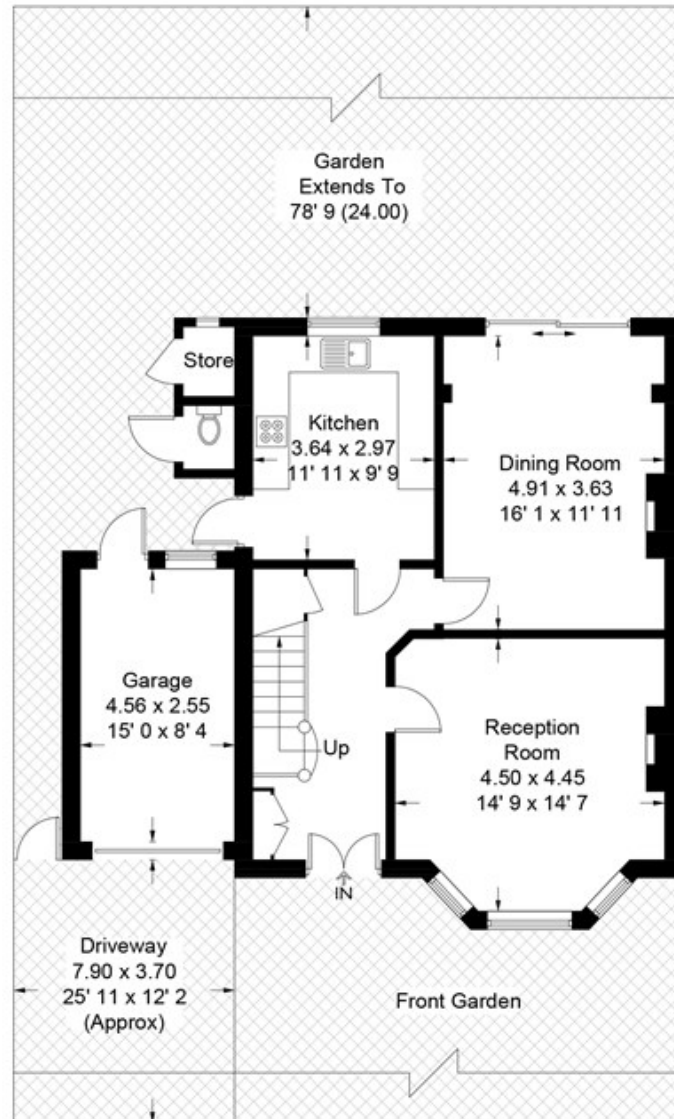
Approximate Gross Internal Area = 1421 sq ft / 132 sq m

Garage = 129 sq ft / 12 sq m

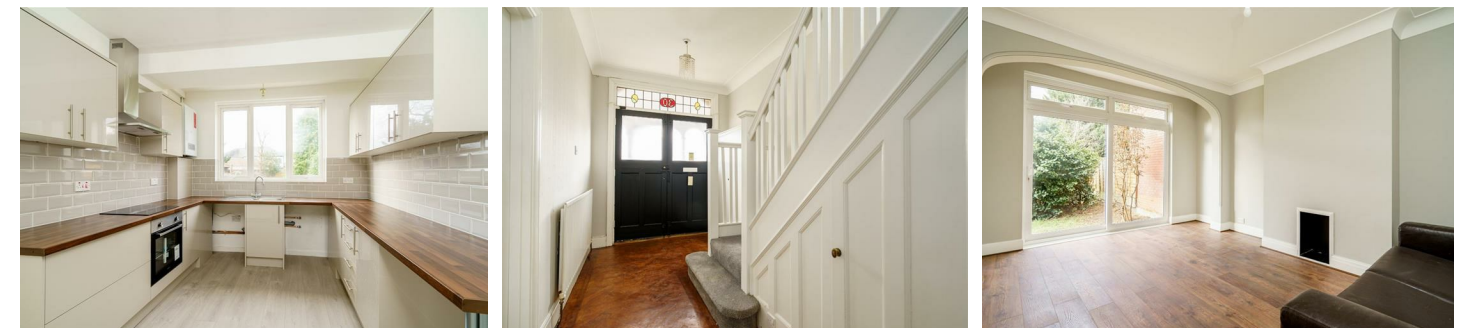
Store = 11 sq ft / 1 sq m

W.C = 10 sq ft / 0.9 sq m

Total = 1571 sq ft / 145.9 sq m



Not to scale, for guidance only and must not be relied upon as a statement of fact
All measurements and areas are approximate only and have been prepared in accordance with the current edition of the RICS Code of Measuring Practice



Byron Avenue, South Woodford

£3,000 PCM

- Four bedroom family home
- 0.6 miles from George Lane
- Family bathroom
- Garage
- 0.7 miles walk to South Woodford Central Line Station
- Modern kitchen
- Low maintenance rear garden
- GARDEN MAINTENANCE INCLUDED (further details to be discussed)

Byron Avenue, South Woodford

Petty Son & Prestwich are proud to offer for rent this spacious four bedroom family home, positioned in the heart of the highly sought after Firs Estate.

Situated on Byron Avenue, this family home sits on a peaceful, spacious, tree-lined street, ensuring tranquility for those who reside here and yet is only 0.7 miles walk to South Woodford Central Line Station and 0.6 miles from George Lane, with its eclectic mix of shops, bistros and bars. The property is comprised of two spacious reception rooms, modern kitchen, four bedrooms and family bathroom with a separate w/c. Externally the property features an outside w/c, garage, a large low maintenance rear garden with side access and off street parking.



Council Tax Band: F

Available Now

Unfurnished

Council Tax Band: F

EPC Rating: D61

1 Week Holding Deposit: £692.30

5 Week Total Deposit: £3461.53

Reception Room

14'9" x 14'7"

Dining Room

16'1" x 11'11"

Kitchen

11'11" x 9'9"

Bedroom

15'2" x 13'0"

Bedroom

13'0" x 12'3"

Bedroom

14'9" x 8'3"

Bedroom

8'11" x 8'10"

Garage

15'0" x 8'4"

