



Redbrook Lane | Rugeley | WS15 1AA

£220,000

 **Webbs**  
estate agents

## Summary

\*\* NO CHAIN \*\* POPULAR LOCATION \*\* IN NEED OF MODERNISATION \*\* THREE BEDROOMS \*\* LIVING/ DINING ROOM \*\* KITCHEN \*\* OFF ROAD PARKING \*\* CLOSE TO AMENITIES \*\* IDEAL FOR FIRST TIME BUYERS \*\* VIEWING ADVISED \*\*

WEBBS ESTATE AGENTS are pleased to market this three bedroom semi detached home, in need of modernisation, in a popular area of Brereton on Redbrook Lane. The property is ideally suited to a first time buyer looking to get their foot on the property ladder. Located close to amenities, useful transport links, schools and much more! The internal accommodation briefly comprises entrance hallway, living dining room, kitchen, three bedrooms, bathroom and separate WC. The property also boasts a good size rear garden and off road parking.

## Key Features

- NO CHAIN
- IN NEED OF MODERNISATION
- LIVING/ DINING ROOM
- OFF ROAD PARKING
- IDEAL FOR FIRST TIME BUYERS
- POPULAR LOCATION
- THREE BEDROOMS
- KITCHEN
- CLOSE TO AMENITIES
- VIEWING ADVISED

## Rooms and Dimensions

### Hallway

### Living/ Dining Room

12'11 x 21'0 (3.94m x 6.40m)

### Kitchen

8'8 x 11'3 (2.64m x 3.43m)

### Landing

### Bedroom 1

10'1 x 11'11 (3.07m x 3.63m)

### Bedroom 2

11'1 x 8'11 (3.38m x 2.72m)

### Bedroom 3

8'8 x 7'10 (2.64m x 2.39m)

### Bathroom

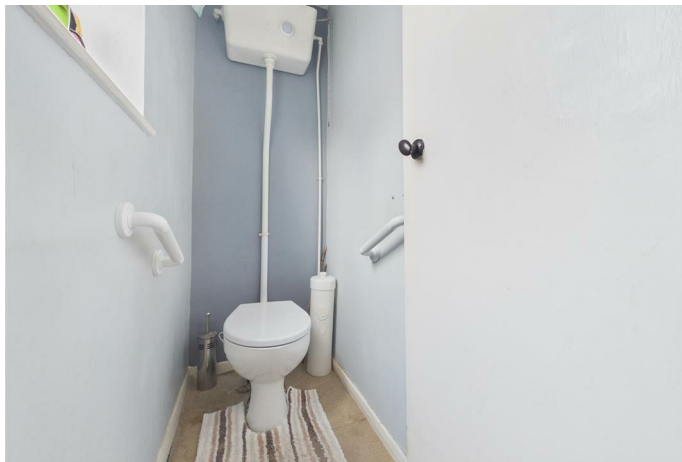
4'9 x 5'7 (1.45m x 1.70m)

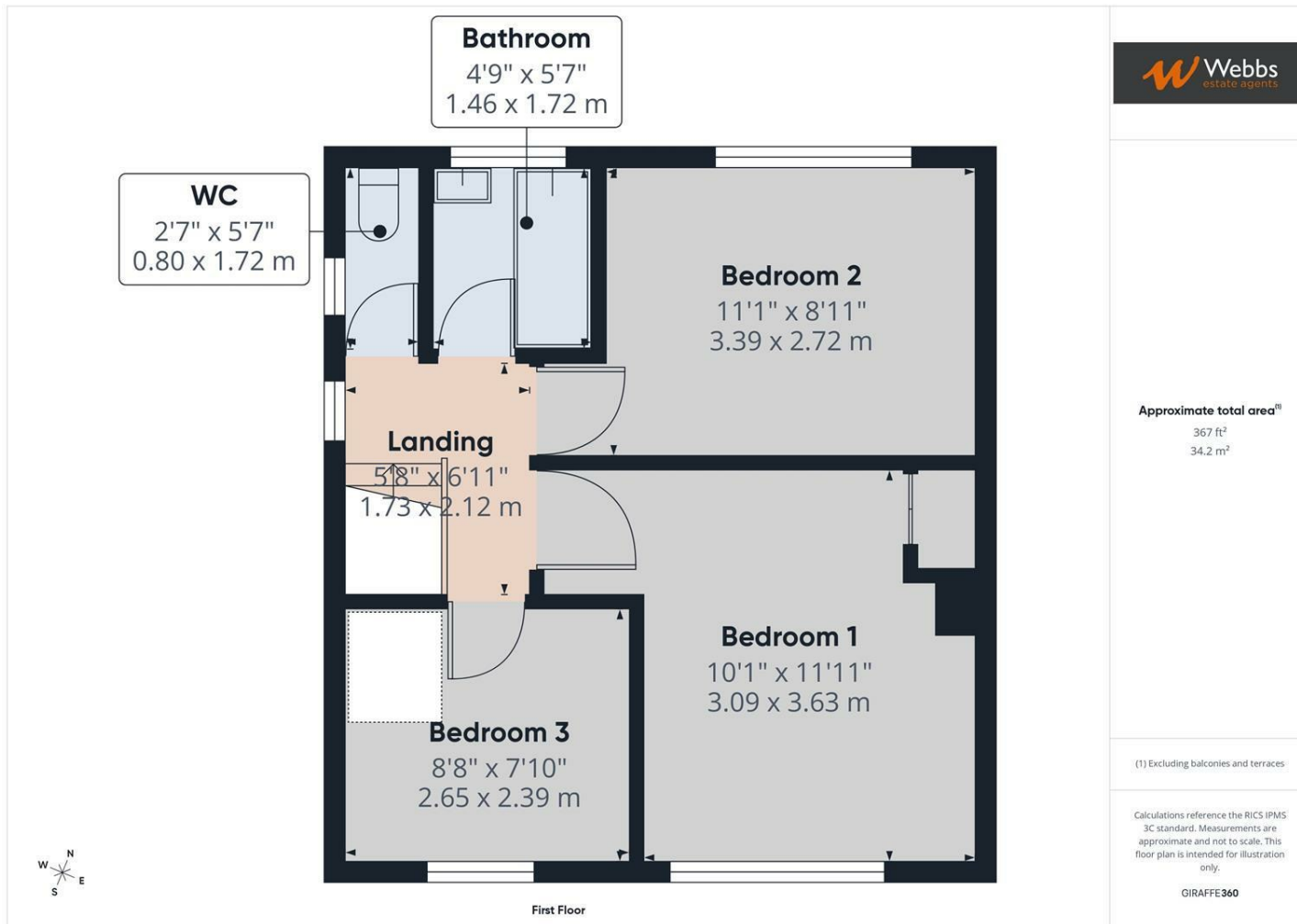
### WC

2'7 x 5'7 (0.79m x 1.70m)

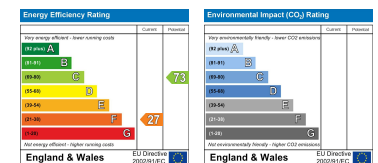
### IDENTIFICATION CHECKS - C







Webbs Estate Agents - endeavour to maintain accurate depictions of properties in Virtual Tours, Floor Plans and descriptions, however, these are intended only as a guide and purchasers must satisfy themselves by personal inspection.



Globe House Upper Brook Street, Rugeley, Staffordshire, WS15 2DN

Tel: 01889 583377 | Email: [rugeley@webbsea.co.uk](mailto:rugeley@webbsea.co.uk) | [www.webbestateagents.co.uk](http://www.webbestateagents.co.uk)

