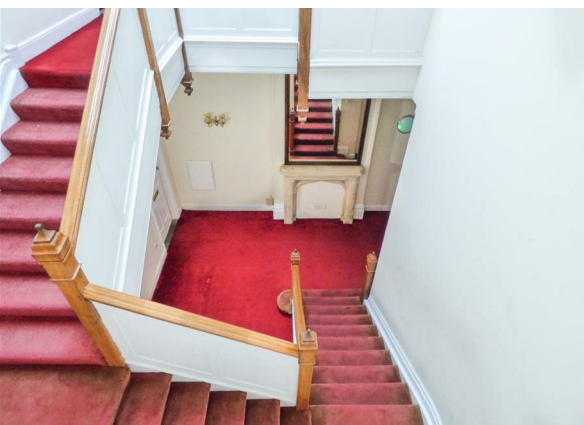


Flat 6, Rayleigh Road, Hutton, Essex, CM13 1SZ

£1,750

Council Tax Band: D



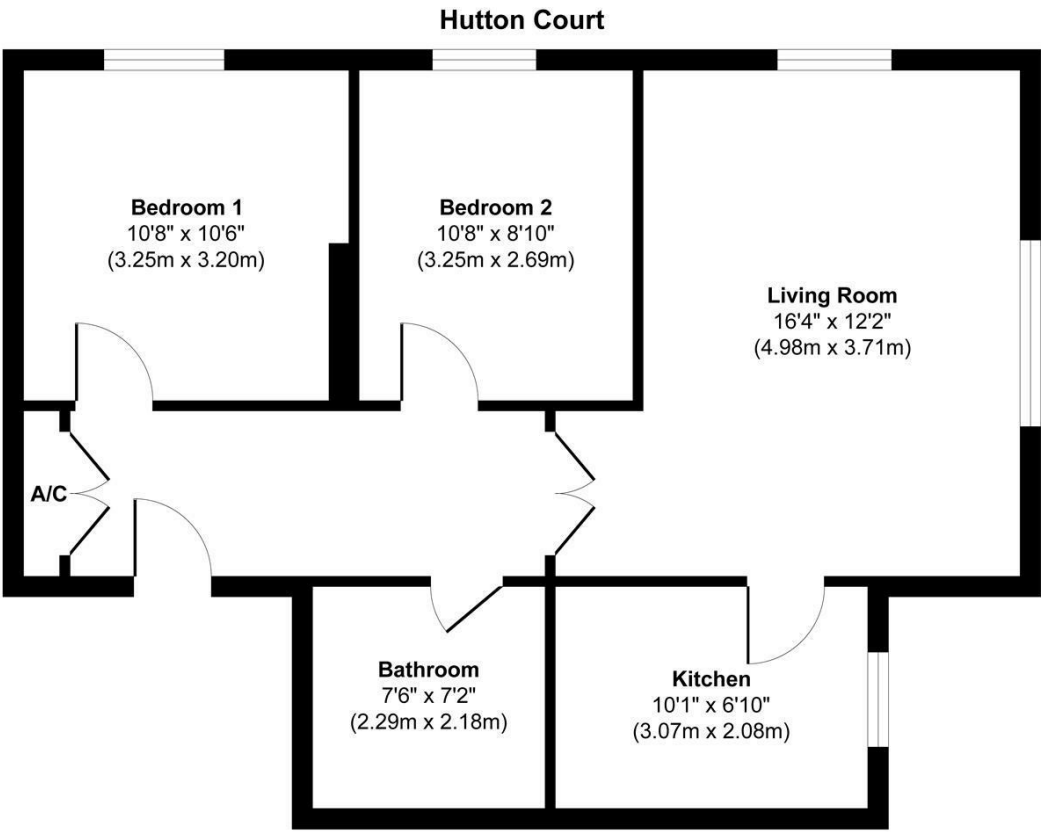
This delightful first-floor apartment forms part of a charming character conversion of a former schoolhouse, combining period features with modern living. The property boasts spacious rooms with high ceilings and sash windows, offering views across beautifully maintained communal gardens.

A fitted kitchen and bathroom provide everyday convenience, while the secure entry system ensures peace of mind. Nestled in open countryside yet within easy reach of Shenfield Broadway (1.7 miles), the apartment offers excellent rail connections for commuters.

Available for immediate occupation, this property is ideal for professionals or couples seeking a unique home in a tranquil setting. Internal viewing is highly recommended.



Open House Brentwood



Floor Plan
Approx. Gross Internal Floor Area 659 sq. ft / 61.22 sq. m
Illustration for identification purposes only, measurements are approximate, not to scale.
Produced by Elements Property



Energy Efficiency Rating		
	Current	Potential
Very energy efficient - lower running costs		
(92 plus) A		
(81-91) B		
(69-80) C		
(55-68) D		
(39-54) E		
(21-38) F		
(1-20) G		
Not energy efficient - higher running costs		
England & Wales		
EU Directive 2002/91/EC		