



Loubet Street, SW17

£550,000

A truly meticulous and exceptional example of a ground floor maisonette that has undergone extensive refurbishment throughout comprising with two generous double bedrooms, a private garden and an immaculate interior.

Loubet Street is a quiet residential road located moments away from Tooting Broadway Underground and Tooting Railway stations with the vast shops, bars and restaurants that Tooting has to offer on the doorstep.

Features

- Own Front Door
- Immaculate Interior
- Open-Plan Kitchen/Reception Room
- Two Double Bedrooms
- Landscaped Garden
- Chain Free



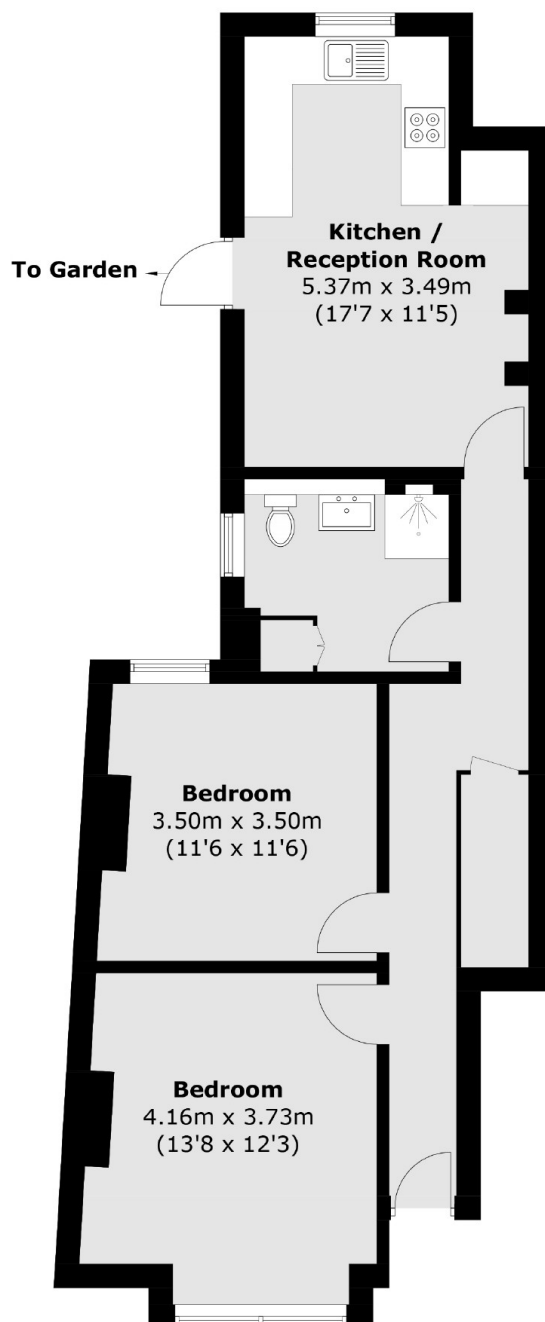
Loubet Street, SW17

With a handsome exterior and retaining it's own front door, the property has undergone a back to brick restoration. The property retains two generous double bedrooms to the front of the property with ample space for storage solutions.

The heart of the home lies at the rear with a stunning open-plan kitchen/reception room furnished with wall and base units, solid worktops, a comfortable seating area and doors opening onto a private landscaped rear garden. The property is sold chain free and retains a long lease.



Loubet Street, London, SW17



Total area (approx.): 64.1 sq. m (689.9 q. ft)