

## Lavender Hill, SW11

£1,700 Per calendar month

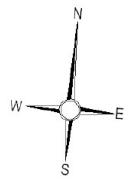
An immaculately presented first floor, spacious one bedroom Victorian conversion flat. It has many period features and the large sash windows fill the property with natural light.

Near to the common, 0.6 miles to Clapham Junction station. There are so many boutique restaurants around that it will take you a while to find your favourite

### Features

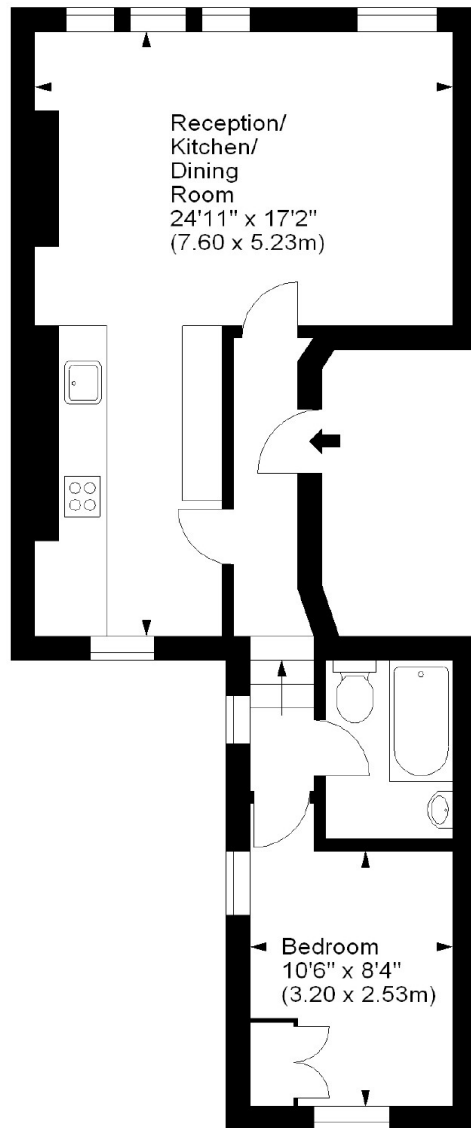
- One Bathroom
- One Bathroom
- Open Plan Living Kitchen
- Spacious Property
- High Ceilings

# Lavender Hill, London, SW11



## Lavender Hill, SW11

Approx. Gross Internal Area  
505 Sq Ft - 46.94 Sq M



## First Floor

For illustration purposes only. Not to scale.  
All measurements are taken and shown at floor level.  
[www.r3photography.co.uk](http://www.r3photography.co.uk) © Photography / Floor Plans / Lease Plans / EPCs

# Dexters

Battersea  
174A Lavender Hill  
London  
SW11 5TG  
Lettings  
020 7350 1300

Energy Rating: D. We aim to make our particulars both accurate and reliable. However they are not guaranteed; nor do they form part of an offer or contract. If you require clarification on any points then please contact us, especially if you're traveling some distance to view. Please note that appliances and heating systems have not been tested and therefore no warranties can be given as to their good working order.



[dexters.co.uk](http://dexters.co.uk)