

# RADLEY MEWS, W8







Approx. Gross Internal Area  
= 165.5 sq m / 1,781 sq ft

## Radley Mews, W8 - Share of Freehold

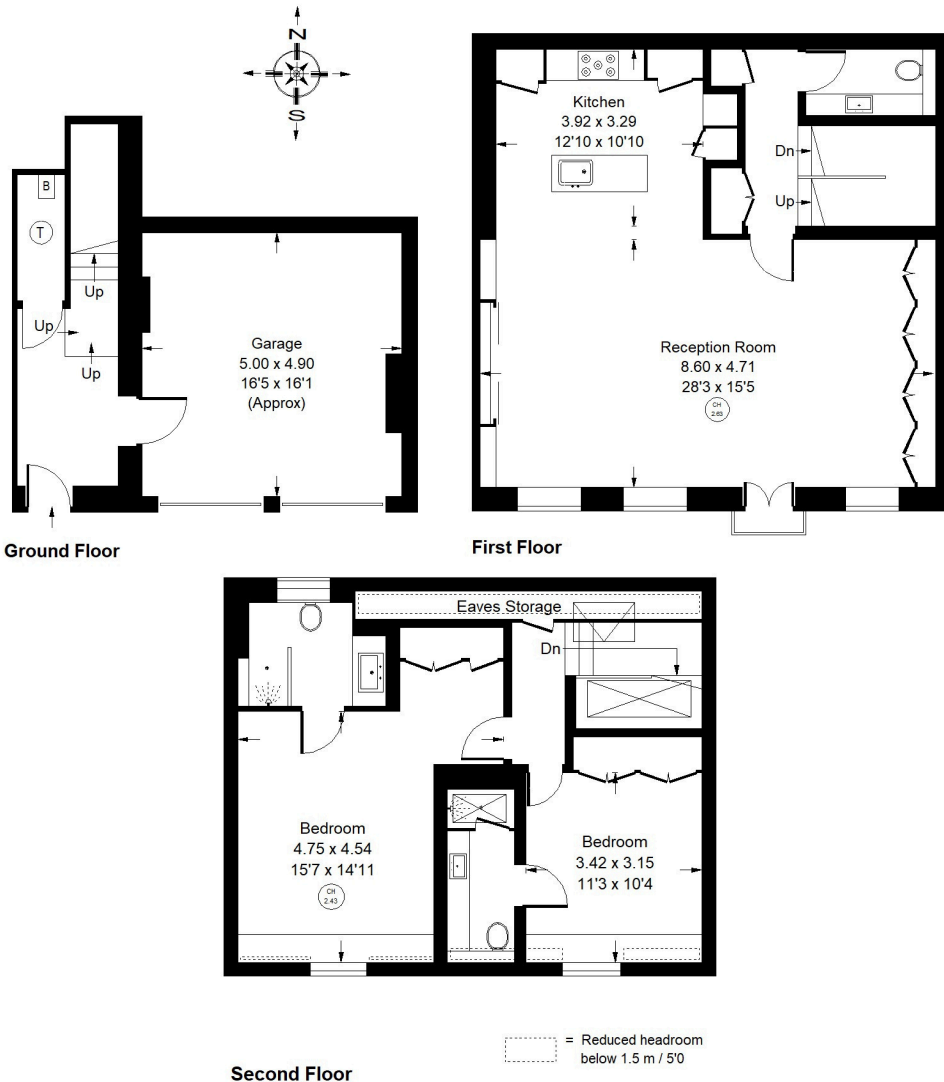
Local Authority - Royal Borough of Kensington & Chelsea

This stunning split-level flat which extends to 1,623 sq ft has been architecturally designed down to the last detail by the current owner. Accessed through a private front door, the spacious entrance hall gives access to a large garage. A polished concrete staircase takes you to the breathtaking open-plan reception room with a bespoke oak kitchen with Miele appliances and stunning limestone island.

The reception room has Dinesen flooring, considered bespoke fitted storage and a south-facing Juliette balcony. The top floor is flooded with natural light from the solar reflective roof light, there are two stylish double bedrooms, both completed with the ensuite shower rooms and bespoke fitted wardrobes. The property has a myriad of subtle design features which need to be seen to fully appreciate the level workmanship and attention to detail which have gone into creating this stunning home.

Radley Mews is a popular mews, situated in 'Stratford Village', which is just south of Kensington High Street, with a variety of restaurants, cafes and shops. The nearest Underground stations are Kensington High Street (District and Circle lines) and Earls Court (District and Piccadilly Lines). Motorists will benefit from rapid routes to the West and Heathrow Airport via M4.

- Two Bedrooms
- Intelligent Design
- Exceptional Reception Room
- Garage
- EPC Rating = TBC
- Council Tax Band = G



Whilst every attempt has been made to ensure the accuracy of the floor plan, measurements are approximate and not to scale. No guarantee is given on the total square footage of the property quoted on the plan. Figures given are for guidance. Plan is for illustration purposes only, not to be used for valuations.