



## Rosemont Road, NW3

### £565,000

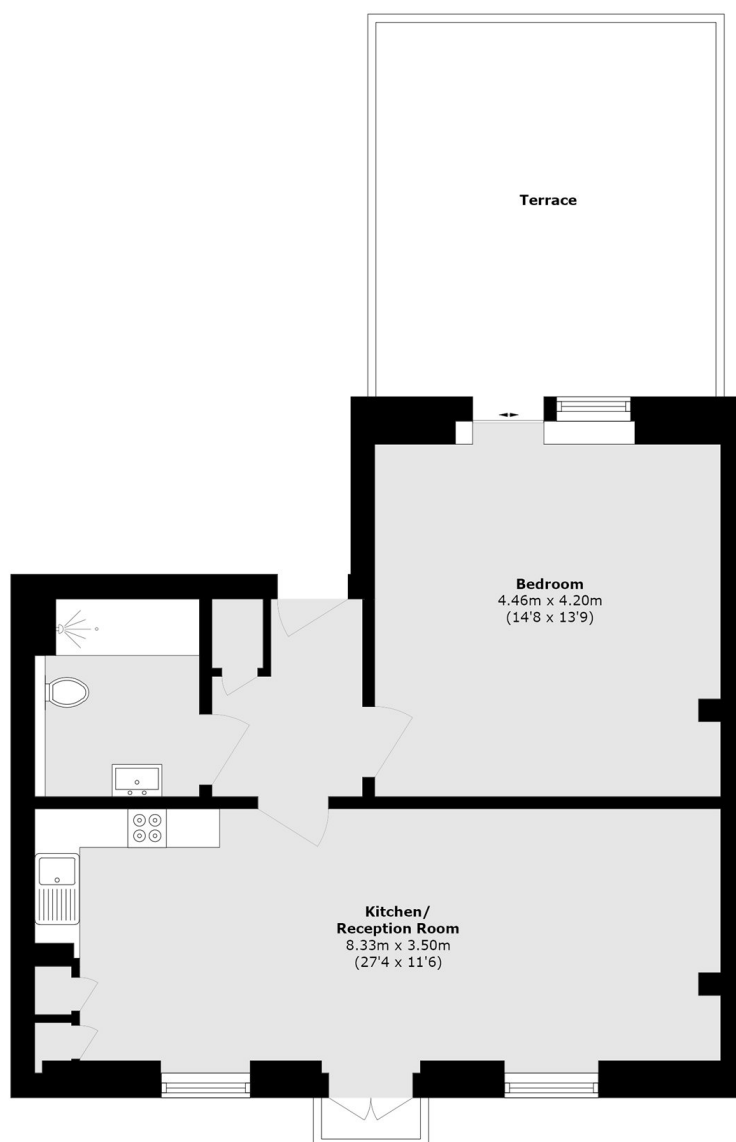
Formally an old coach house, this beautifully converted home blends character with contemporary design, featuring an open-plan living space and high-spec kitchen with integrated appliances. The generous double bedroom opens onto a large roof terrace.

Moments from multiple amenities at Finchley Road, transport into Central London is at hand with buses and trains at Finchley & Frognal (Overground) and Finchley Road (Jubilee Line).

### Features

- Converted Coach House
- First Floor
- Juliette Balcony
- Private Roof Terrace
- Share Of Freehold
- High Spec Appliances

# Rosemont Road, LONDON, NW3



Total area (approx.): 57.0 sq. m (613.5 sq. ft)

Terrace area (approx.): 18.7 sq. m (201.2 sq. ft)

## Dexters

West Hampstead Sales  
349 West End Lane  
London  
NW6 1LT  
Sales  
020 7644 9300

Energy Rating: B. We aim to make our particulars both accurate and reliable. However they are not guaranteed; nor do they form part of an offer or contract. If you require clarification on any points then please contact us, especially if you're traveling some distance to view. Please note that appliances and heating systems have not been tested and therefore no warranties can be given as to their good working order.

 **RICS** | Regulated  
Estate Agent  
and Letting Agent

[dexters.co.uk](https://www.dexters.co.uk)