



25 Deepdale Avenue

, Stockton-On-Tees, TS18 2QE

£225,000



Igomove are pleased to present this impressive four bedroom detached family home, superbly positioned on the ever-popular Deepdale Avenue, Stockton. Spanning three well-planned floors, this modern property offers generous and versatile accommodation, ideal for growing families. Well presented throughout, the home also benefits from solar panels, a driveway providing off-road parking, an enclosed rear garden backing onto woodland, uPVC double glazing and gas central heating.



Upon entering, you are welcomed by a spacious entrance hallway with staircase to the first floor, useful understairs storage and access to the ground floor accommodation. To the front elevation is a generously proportioned lounge measuring approximately 3.92m x 3.98m, offering a comfortable family living space.

To the rear of the property is a stylish open-plan kitchen/diner measuring 5.35m x 3.03m, fitted with a modern range of wall, base and drawer units complemented by wood-effect work surfaces, integrated oven and hob with extractor, inset sink and ample space for dining. French doors open directly onto the rear garden, creating an ideal space for both everyday family life and entertaining. A separate utility room provides additional storage and laundry facilities, while a convenient ground floor cloakroom/WC completes the accommodation on this level.

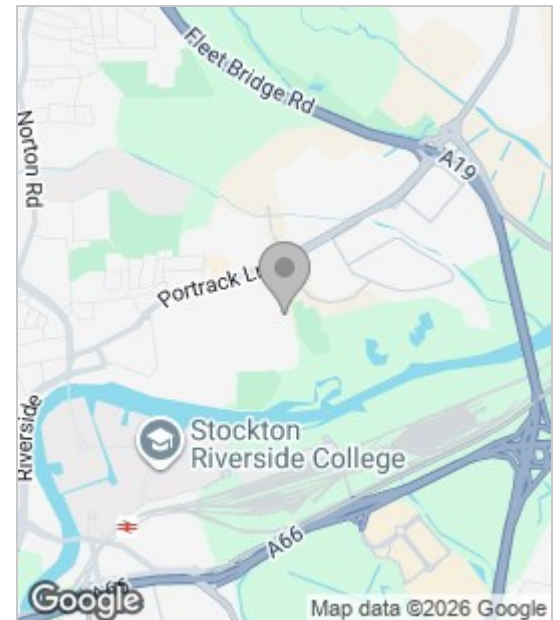
The first floor landing gives access to three well-proportioned bedrooms and the family bathroom. The second bedroom benefits from its own en-suite shower room. There are two further bedrooms both ideal as children's rooms, guest accommodation or home office space. The contemporary family bathroom is fitted with a three-piece suite including bath, wash basin and WC.

Occupying the entire second floor is an impressive master bedroom suite, creating a superb private retreat. This spacious room enjoys the advantage of a dedicated en-suite shower room, additional storage and useful built-in storage cupboard.

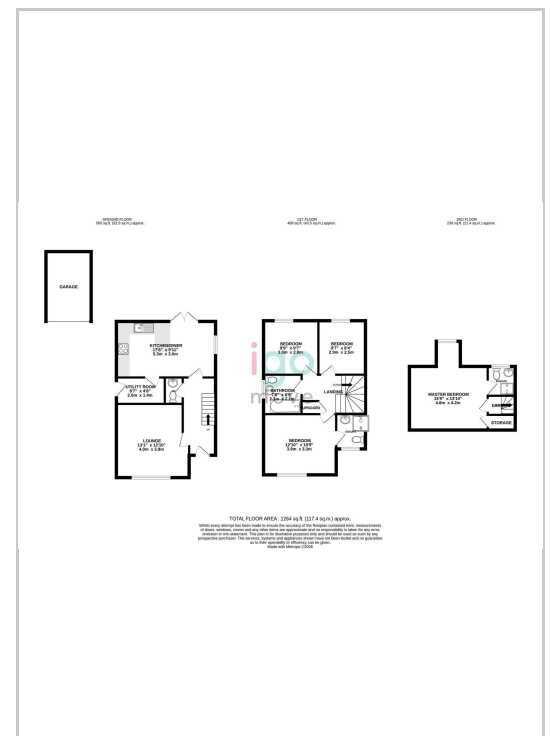
Externally, the property enjoys a driveway providing off-road parking and garage to the front alongside a neat lawned garden. A gated side entrance leads to the enclosed rear garden, which offers patio seating areas, lawn and an attractive backdrop of mature woodland, providing a pleasant degree of privacy.

This excellent family home occupies a desirable location within easy reach of reputable schools, local shops, amenities, commuter links and Stockton Town Centre. Make this home your own and book your viewing today. Igomove are open 7 days a week.

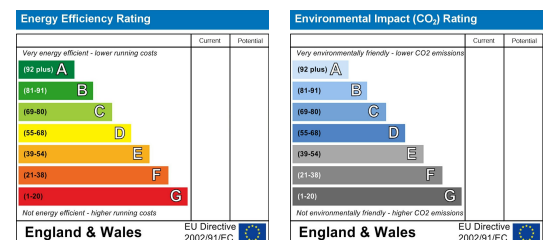
Area Map



Floor Plan



Energy Efficiency Graph



These particulars, whilst believed to be accurate are set out as a general outline only for guidance and do not constitute any part of an offer or contract. Intending purchasers should not rely on them as statements of representation of fact, but must satisfy themselves by inspection or otherwise as to their accuracy. No person in this firm's employment has the authority to make or give any representation or warranty in respect of the property.