



Clements estate agents



Heath Lane, Boxmoor, Hemel Hempstead, HP1 1TT

Price Guide £550,000

Set in this sought after Boxmoor location, this charming semi-detached family home offers a perfect blend of comfort and character. The property boasts spacious room sizes with three bedrooms, modern shower room, off street parking and a large well kept garden to rear. The property is situated in this sought after location ideally situated for good local schools, amenities and transport links. Viewing Essential!

Clements Estate Agents are delighted to offer this charming semi-detached family home which offers a perfect blend of comfort and character. The property boasts spacious room sizes with three bedrooms, modern shower room, off street parking and a large well kept garden to rear. The property is situated in this sought after location ideally situated for good local schools, amenities and transport links. Call Now to View!

FRONT DOOR TO :

LOUNGE 11'4 x 10'1 (3.45m x 3.07m)



DINING ROOM 13'8 x 10'5 (4.17m x 3.18m)

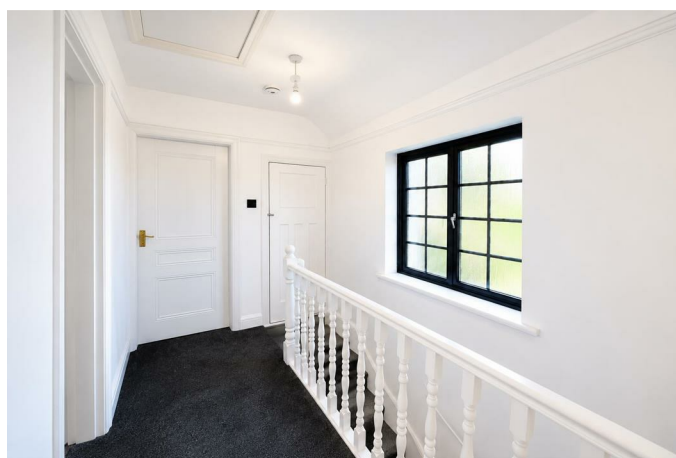


LEAN TO

KITCHEN 9'9 x 5'10 (2.97m x 1.78m)



FIRST FLOOR LANDING



MAIN BEDROOM 13'8 x 10'7 (4.17m x 3.23m)



BEDROOM TWO 10'8 x 10'3 (3.25m x 3.12m)



OUTSIDE



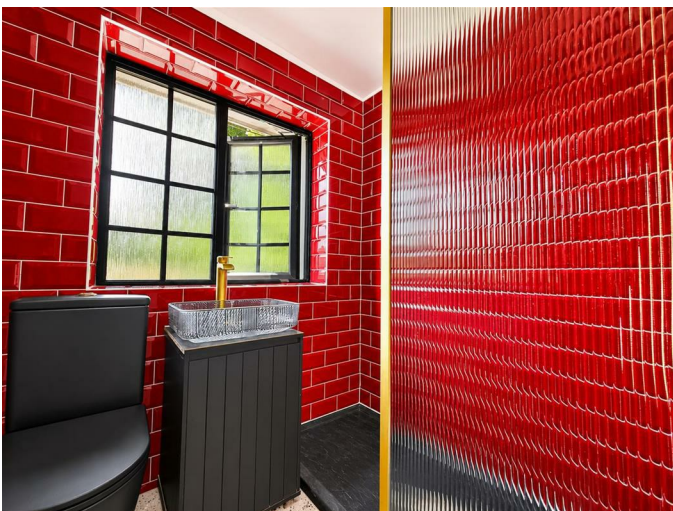
BEDROOM THREE 7'01 x 6'0 (2.16m x 1.83m)



FRONT GARDEN



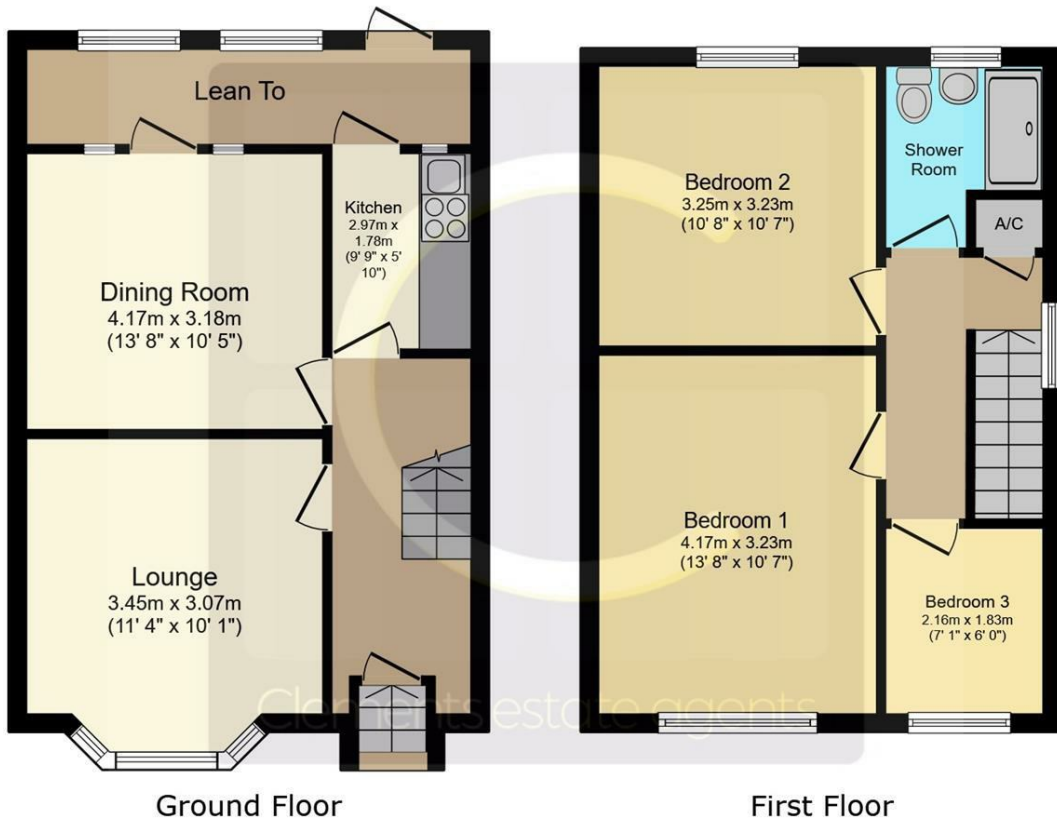
BATHROOM



REAR GARDEN

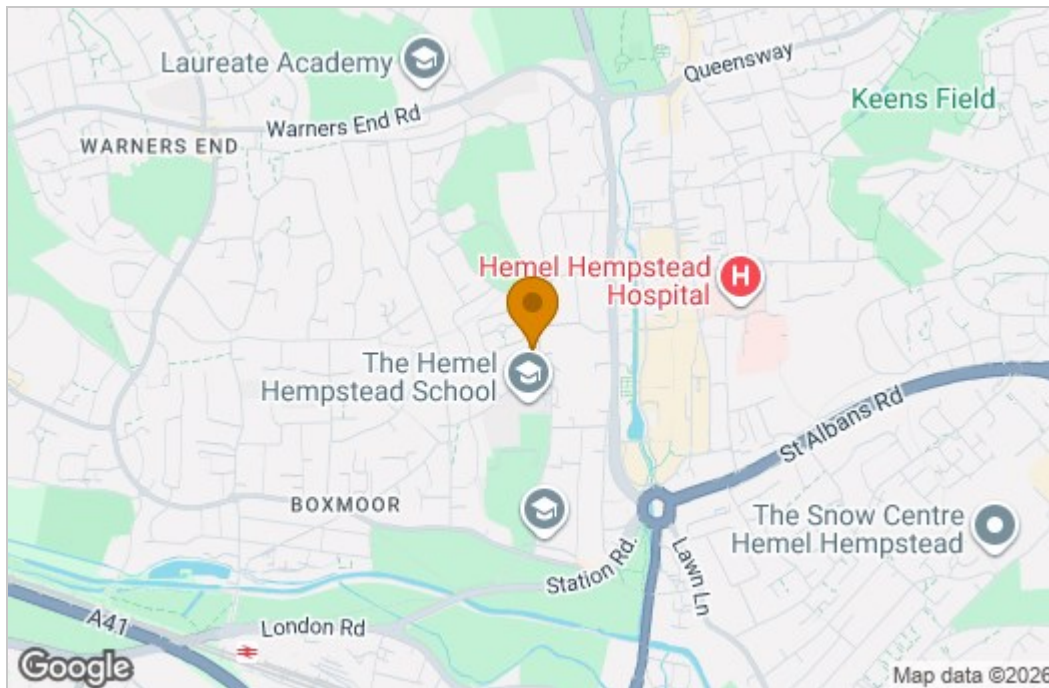


Floor Plan

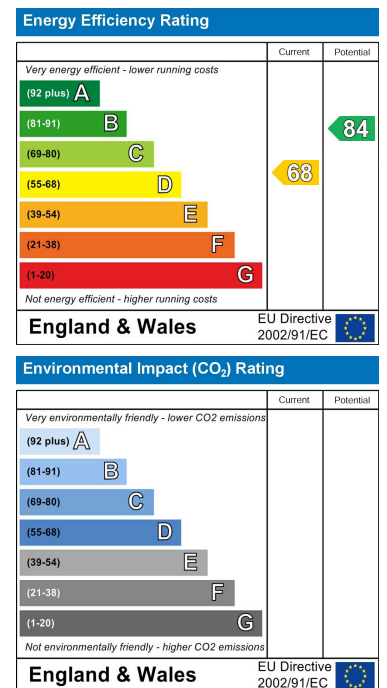


This floor plan is for illustrative purposes only. It is not drawn to scale. Any measurements, floor areas (including any total floor area), openings and orientations are approximate. No details are guaranteed, they cannot be relied upon for any purpose and do not form any part of any agreement. No liability is taken for any error, omission or misstatement. A party must rely upon its own inspection(s). Powered by www.Propertybox.io

Area Map



Energy Efficiency Graph



These particulars, whilst believed to be accurate are set out as a general outline only for guidance and do not constitute any part of an offer or contract. Intending purchasers should not rely on them as statements of representation of fact, but must satisfy themselves by inspection or otherwise as to their accuracy. No person in this firm's employment has the authority to make or give any representation or warranty in respect of the property.

45 Marlowes, Hemel Hempstead, Hertfordshire, HP1 1LD

Tel: 01442 214151 Email: sales@clementsestateagents.co.uk <https://www.clementsestateagents.co.uk>