



Red Lion Place, SE18

£2,000 Per calendar month

Situated on a quiet no through road just off of Shooters Hill comes this attractive Two double bedroom Victorian Cottage. Extended to the rear and offering open plan living to the ground floor this well presented property would perfectly suit a professional couple.

Just over a mile to Queen Elizabeth Hospital and within a short drive to Woolwich Arsenal for National rail, DLR and the new Elizabeth Line.

Features

- Great Location
- Two bedrooms
- Cottage
- Unfurnished
- Garden
- Extended

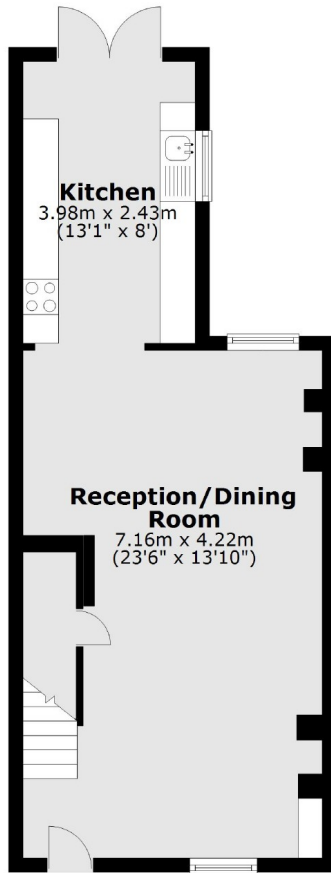


Red Lion Place, SE18

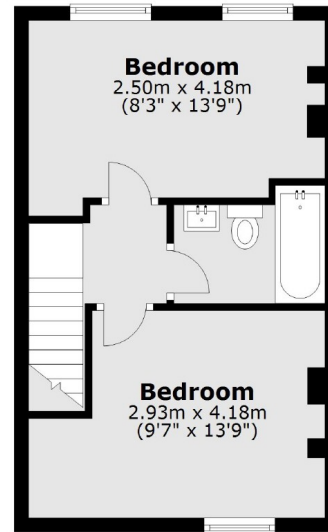


Red Lion Place, London, SE18

Ground Floor



First Floor



Total area: approx. 69.5 sq. metres (747.8 sq. feet)