

Rupert Gardens, SW9

£325,000

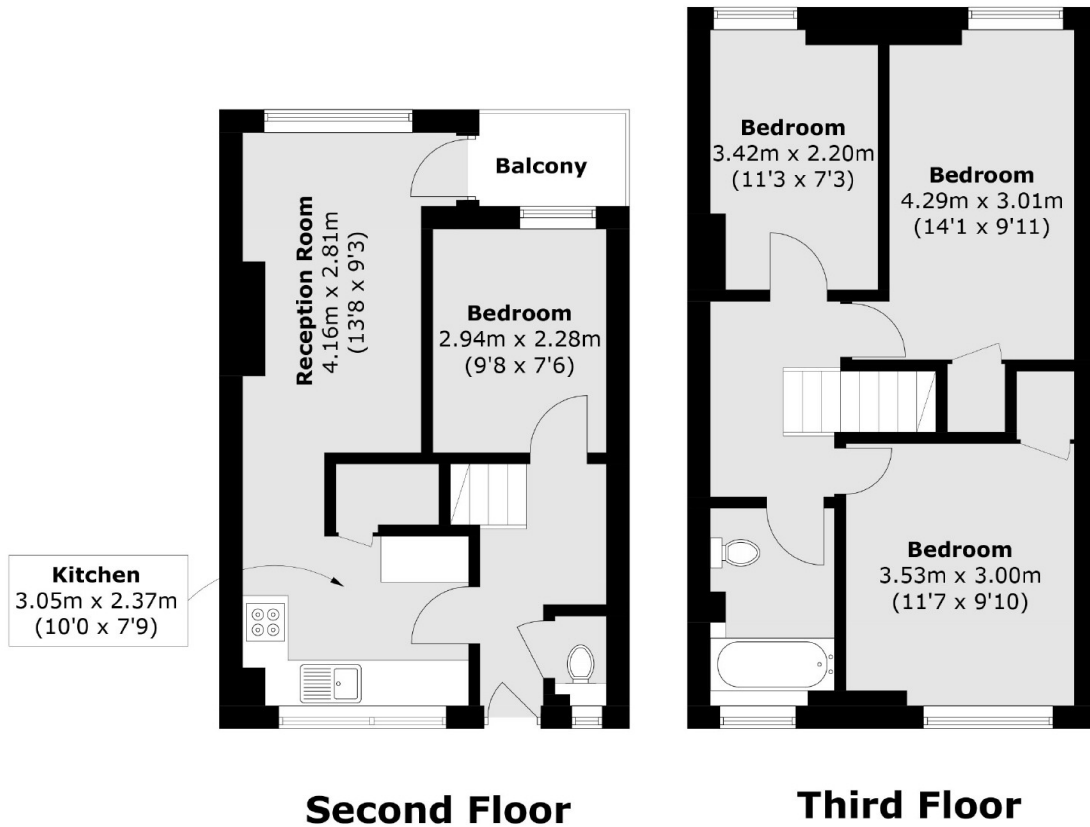
A large, four bedroom split level maisonette. The property comprises of four double bedrooms, a family bathroom, living / dining room and a separate kitchen. The property includes a private balcony and is being sold chain free.

Rupert Gardens is situated within easy reach of local shops, bars and restaurants while the green space of Wyck Gardens is moments away along with Loughborough Junction station.

Features

- Chain Free
- Split Level
- Balcony
- Four Double Bedrooms
- Private Balcony

Rupert Gardens, London, SW9



Total area (approx.): 76.1 sq. m (819.0 sq. ft)
Balcony area (approx.): 2.3 sq. m (24.7 sq. ft)