



ALEXANDER RUMSEY  
REAL ESTATE

# Gorselands Close, West Byfleet, KT14

Guide Price £935,000

🛏 4 🚿 2 🚗 3

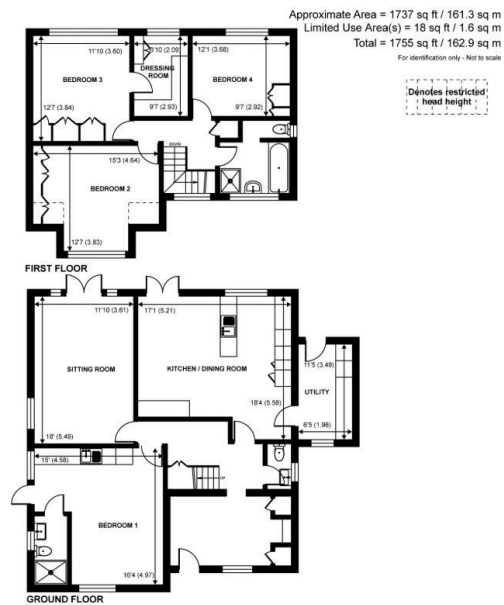


Set within the highly sought-after Dartnell Park, Gorselands Close enjoys a prime position in an exclusive cul-de-sac, perfectly suited to growing families seeking both space and versatility. Offering approximately 1,755 sq ft of well-balanced accommodation, the property has been thoughtfully designed to meet the demands of modern family living.

The first floor comprises three generous double bedrooms, while an additional double bedroom on the ground floor benefits from its own ensuite shower room, providing ideal flexibility for guests, multi-generational living, or a home office suite.

A particular highlight is the exceptional rear garden - one of the largest in the area - offering an impressive outdoor space complete with a charming summerhouse. Residents also enjoy access to an additional private riverside area backing directly onto the picturesque River Wey, creating a rare and tranquil setting.





- Prime position within the highly sought-after Dartnell Park
- Exclusive and peaceful cul-de-sac setting
- Spacious and versatile family accommodation
- Approximately 1,755 sq ft of living space
- Four generous double bedrooms
- Ground floor bedroom with ensuite shower room
- Ideal for growing or multi-generational families
- One of the area's largest rear gardens
- Summerhouse providing excellent additional space
- Private residents' access backing onto the River Wey

