



77 Strawberry Fields Row Town KT15 1BQ

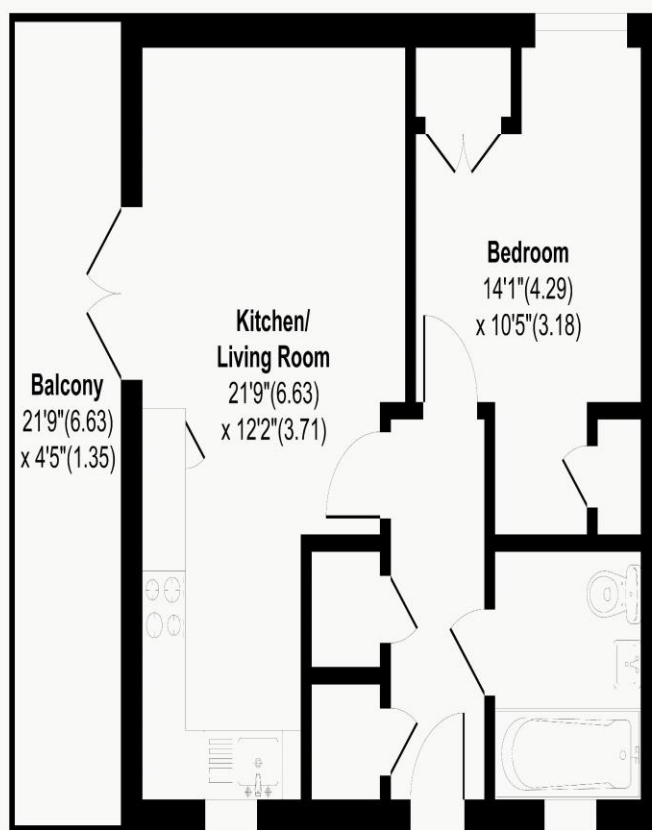
£240,000



Strawberry Fields, Row Town, KT15

Approximate Area = 502 sq ft / 46.6 sq m

For Identification Only - Not to scale



Ground Floor

Floor plan Produced in accordance with RICS Property Measurement 2nd Edition, Incorporating International Property Measurement Standards (IPMS2 Residential). Produced for James Neave Estate Agents.



Perfectly suited for first-time buyers or those looking to downsize, this modern one-bedroom ground-floor maisonette offers stylish, low-maintenance living in the heart of Row Town. With a neutral finish throughout, the home is move-in ready and designed for comfort. The heart of the home is a bright and airy open-plan living space that flows seamlessly into a modern kitchen, creating a social hub perfect for entertaining. Doors lead directly from the living area to a private balcony terrace, offering a peaceful outdoor retreat. The accommodation further comprises a generous double bedroom featuring a convenient built-in wardrobe and ample internal storage facilities throughout the hallway. Equipped for modern living, the property benefits from gas central heating, double glazing, and an excellent EPC Rating of C, ensuring cost-effective running costs year-round. Additionally, the home includes the benefit of allocated off-street parking for one vehicle. Situated in a prime position within the estate, the property is just moments away from the scenic Woodland Walk, ideal for morning strolls or weekend exercise. Row Town Village is a highly sought-after community, offering a charming village atmosphere while remaining incredibly practical. Residents enjoy easy access to local shops, a friendly neighbourhood pub, and a popular garden centre. This property offers fantastic flexibility for buyers and is available to purchase either through a traditional sale at 100% ownership for £240,000, or via Shared Ownership with a 45% share for £108,000. This provides an excellent opportunity to get a foot on the property ladder with a lower deposit. The property comes with a long leasehold of over 100+ years, providing long-term peace of mind for the new owner.



AGENTS NOTES: These details do not constitute any part of an offer or contract. In issuing them we do not have any authority to give any warranty or representation whatsoever in respect of this property. These details are provided without any responsibility on our part or the part of the vendors. No statements in these details are to be relied upon as representations of fact and purchasers should satisfy themselves by inspection or otherwise as to the accuracy of the statements contained therein.

Equipment: We have not tested the equipment or central heating system mentioned in these particulars and purchasers are advised to satisfy themselves as to their working order and condition.

Measurements: Great care is taken when measuring but measurements should not be relied upon for ordering carpets, equipment, etc.