



Maes Y Bryn, £270,000

- Detached Two Bedroom Bungalow
- Possibility to Extended Into The Attic
- Driveway & Garage
- Private Rear Garden
- Ideal Project
- Great Location
- EPC Rating: D



 2  1  1



About the property

Discover the perfect opportunity to create your dream home with this charming two-bedroom detached bungalow located in the heart of Tonyrefail. This property boasts two generously sized bedrooms, providing ample space for relaxation and personalisation. The large lounge invites you to unwind, while the adjoining dining room offers a welcoming space for family gatherings and entertaining friends. The entryway/porch adds a touch of character and functionality, making it easy to transition from the outdoors to the comfort of your home.

Step outside to find a large private rear garden, an ideal canvas for gardening enthusiasts or those seeking a tranquil outdoor retreat. Whether you envision hosting summer barbecues, creating a play area for children, or simply enjoying peaceful moments in nature, this garden offers endless possibilities. The property also features a driveway that accommodates multiple cars, ensuring convenience for you and your guests, all while maintaining a sense of privacy in this serene neighbourhood.

Situated in a prime location, this bungalow is situated in the vicinity to local shops, schools, and essential amenities, making it perfect for families and professionals alike. This property presents an excellent project for those looking to put their own stamp on a home, allowing you to infuse your personal style and preferences into every corner. Don't miss out on this fantastic opportunity to secure a versatile property in

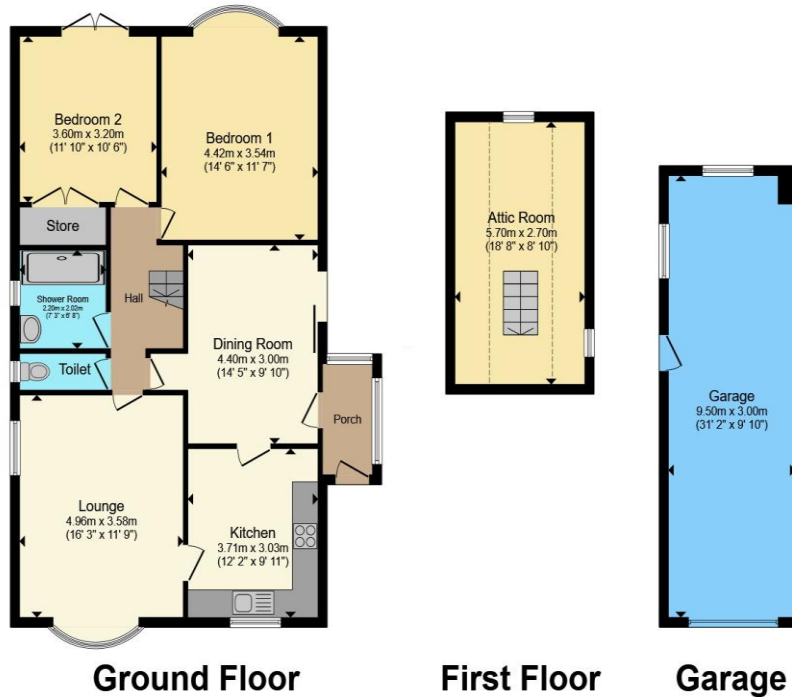


Accommodation

01443 222851

talbotgreen@peteralan.co.uk

Floorplan



Total floor area 137.9 m² (1,485 sq.ft.) approx

This floor plan is for illustrative purposes only. It is not drawn to scale. Any measurements, floor areas (including any total floor area), openings and orientation are approximate. No details are guaranteed, they cannot be relied upon for any purpose and they do not form part of any agreement. No liability is taken for any error, omission or misstatement. A party must rely upon its own inspection(s). Powered by www.propertybox.io



Important Information

Note while we endeavour to make our sales details accurate and reliable, if there is any point which is of particular interest to you, please contact the office and we will be pleased to confirm the position for you. We have not personally tested any apparatus, equipment, fixtures, fittings or services and cannot verify they are in working order or fit for their purposes. Nothing in these particulars is intended to indicate that carpets or curtains, furnishings or fittings, electrical goods (whether wired or not). Gas fires or light fittings or any other fixtures not expressly included form part of the property offered for sale. This computer generated Floorplan, if applicable, is intended as a general guide to the layout and design of the property. It is not to scale and should not be relied upon for dimensions. Tenure: We cannot confirm the tenure of the property as we have not had access to the legal documents. The buyer is advised to obtain verification from their solicitor or surveyor.

Peter Alan Limited is registered in England and Wales under company number 2073153, Registered Office is Cumbria House, 16-20 Hockliffe Street, Leighton Buzzard, Bedfordshire, LU7 1GN. VAT Registration Number is 500 2481 05. For activities relating to regulated mortgages and non-investment insurance contracts, Peter Alan Limited is an appointed representative of Connells Limited which is authorised and regulated by the Financial Conduct Authority. Connells Limited's Financial Services Register number is 302221. Most buy-to-let

