



Guide Price
£525,000

Freehold

2x  1x  1x 

**Merryfield Drive,
Horsham, West Sussex,
RH12**

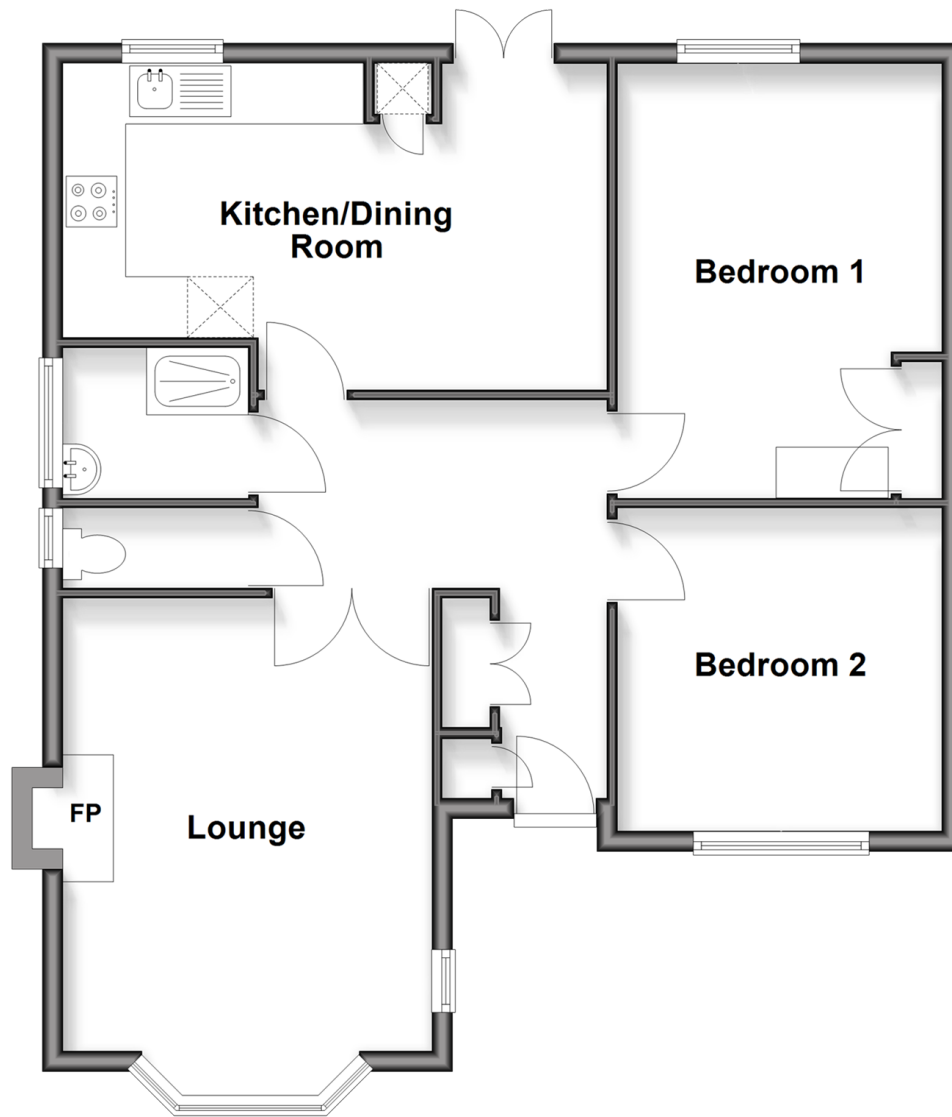
OVER 60?

Secure this property
for up to **59% less!**

cubitt & west
Helping you move forwards

Ground Floor

Approx. 73.1 sq. metres (787.2 sq. feet)



Accommodation

GROUND FLOOR

Entrance Hall

Lounge: 16'6 x 11'8 (5.03m x 3.56m)

Separate Toilet

Wet Room: 5'6 x 4'9 (1.68m x 1.45m)

Kitchen/Dining Room: 17'6 x 8'10 (5.34m x 2.69m)

Bedroom 1: 13'9 x 10'4 (4.19m x 3.15m)

Bedroom 2: 10'6 x 10'3 (3.20m x 3.13m)

OUTSIDE

Garage & Driveway

Front & Rear Garden



Main features

- A beautifully presented well loved and cared for home, perfect for older buyers downsizers
- The stunning kitchen/dining room was created by using the former third bedroom
- Cosy lounge with sunny bay window
- Plenty of driveway parking and garage
- Very popular location on the favoured west side of Horsham, a short walk from the shops



Nearest Schools

Primary Schools: Greenway School 0.3 miles, Arunside School, Horsham 0.7 miles, St John's Catholic Primary 0.7 miles
Secondary Schools: Tanbridge House School 0.9 miles, Christ's Hospital 2.1 miles, Forest School, The 2.7 miles



Transport Information

Train Stations: Horsham 0.8 miles, Littlehaven 1.4 miles, Warnham 1.5 miles



Address

Merryfield Drive, Horsham, West Sussex, RH12



Directions

For directions to this property please contact us.



cubitt&west
Helping you move forwards

Call Horsham Branch 01403 269268 ■ cubittandwest.co.uk



- The seller is a person connected with Cubitt & West as defined in the Estate Agents Act 1979
- Appliances & services are untested, dimensions are approximate and floor plans are not to scale

- Legal advice should be taken to verify fixtures/fittings, planning, alterations and/or lease details
- Through a Homewise Home For Life Plan people aged 60+ can secure this property for up to 59% less, by purchasing a Lifetime Lease



20918228/20260306/SEH/CB