



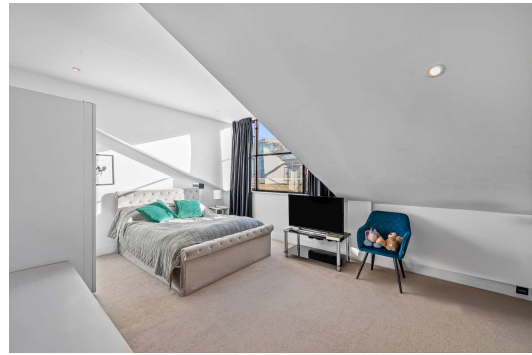
Town Meadow

Brentford, TW8

Asking Price £520,000

A bright and spacious two-bed split-level apartment with parking.

CHESTERTONS



Town Meadow

Brentford, TW8

-



A bright and well-proportioned split-level apartment extending to over 1,000 sq ft, offering an excellent balance of living and private space, ideally positioned moments from the River Thames and Brentford High Street. The property benefits from a split-level layout, creating a clear separation between living and sleeping areas, ideal for both owner-occupiers and investors.

Set across two floors, the property offers a fantastic sense of space and separation. The ground floor is centred around a generous open-plan reception/dining room and kitchen, measuring over 23ft in width – a brilliant entertaining space with plenty of natural light. A well-proportioned second bedroom and a modern bathroom

Tenure: Leasehold 98 years 8 months

Service Charge: £4923.26

Ground Rent: £583.56

Local Authority: Hounslow Council

Council Tax Band: F

Score	Energy rating	Current	Potential
92+	A		
81-91	B		
69-80	C	76 C	79 C
55-68	D		
39-54	E		
21-38	F		
1-20	G		

Chestertons Kew Sales

1 Royal Parade

Kew

Richmond

TW9 3QD

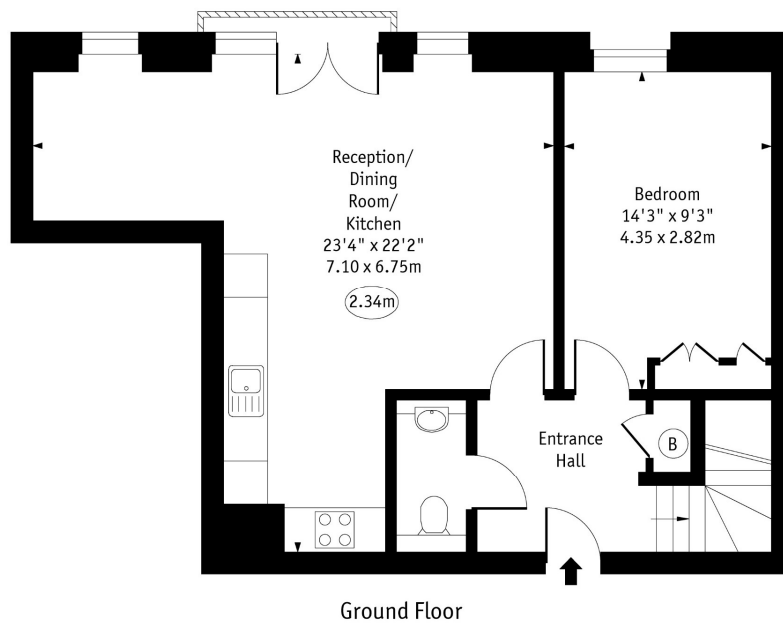
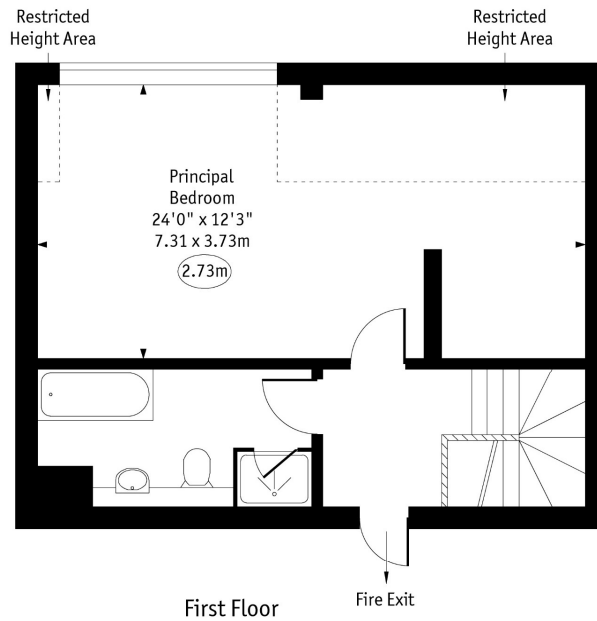
kew@chestertons.co.uk

020 8104 0340

chestertons.co.uk

Town Meadow,
Brentford,
Middlesex, TW8

○ - Ceiling Height



Approx Gross Internal Area 990 Sq Ft - 91.97 Sq M

Approx. Floor Area Including Restricted Heights 1054 Sq Ft - 97.90 Sq M

Every attempt has been made to ensure the accuracy of the floor plan shown.
However, all measurements, fixtures, fittings, and data shown are approximate interpretations and
for illustrative purposes only. Measured according to the RICS. Not To Scale.

www.goldlens.co.uk
Ref. No. 031368DH

