



Shepherds Bush
Road W6



Shepherds Bush Road W6

ROOF TERRACE

3 BEDROOM MAISONETTE

BRIGHT RECEPTION

HIGH CEILINGS AND WOODEN FLOORS

GREAT LOCATION OVERLOOKING THE GREEN

CLOSE TO SHOPS AND TRANSPORT

UNFURNISHED

AVAILABLE 17TH AUGUST

COUNCIL TAX BAND E

EPC RATING D

Excellent 3 bedroom maisonette overlooking Brook Green, with high ceiling, wooden floors, spacious and light reception, large kitchen breakfast room and small roof terrace. Located close to shops and the transport links at Hammersmith. Unfurnished, available 17th August.

PLEASE NOTE Due to landlord licensing this property is not available to sharers.

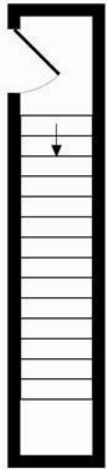
£3,500 PER MONTH

SUBJECT TO CONTRACT

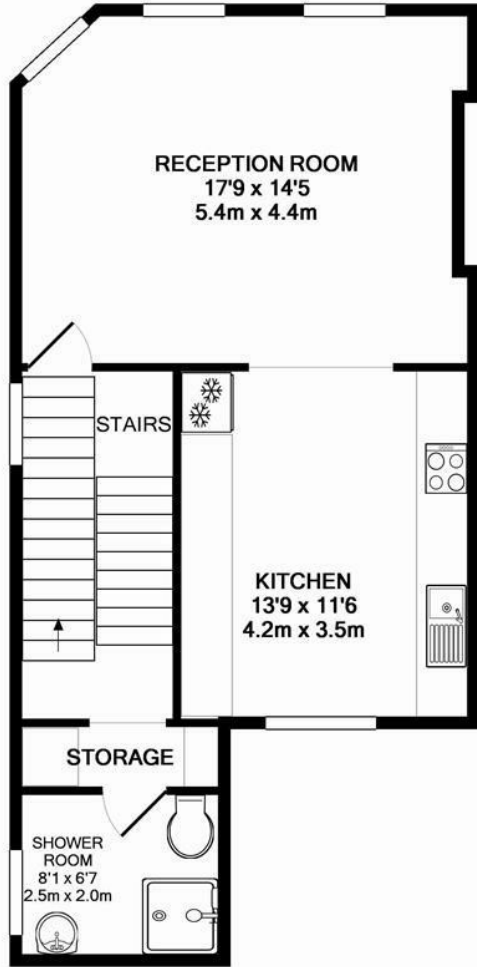




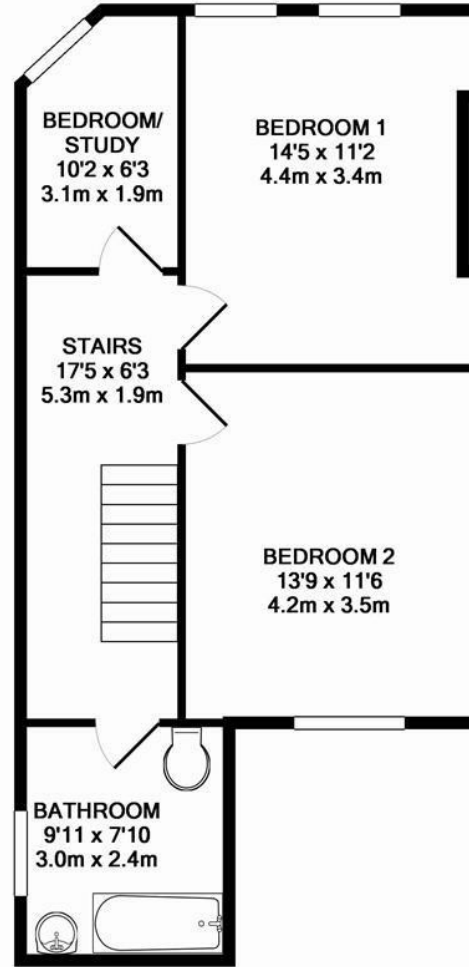




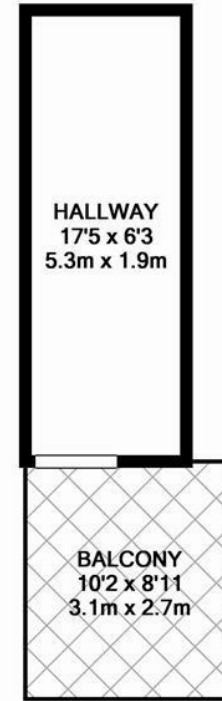
ENTRANCE FLOOR
APPROX. FLOOR
AREA 57 SQ.FT.
(5.3 SQ.M.)



1ST FLOOR
APPROX. FLOOR
AREA 554 SQ.FT.
(51.5 SQ.M.)



2ND FLOOR
APPROX. FLOOR
AREA 554 SQ.FT.
(51.5 SQ.M.)



TERRACE FLOOR
APPROX. FLOOR
AREA 109 SQ.FT.
(10.1 SQ.M.)

MAISONETTE FLAT, 129 SHEPHERDS BUSH ROAD, W6 7LP
TOTAL APPROX. FLOOR AREA 1274 SQ.FT. (118.3 SQ.M.)

Whilst every attempt has been made to ensure the accuracy of the floor plan contained here, measurements of doors, windows, rooms and any other items are approximate and no responsibility is taken for any error, omission, or mis-statement. This plan is for illustrative purposes only and should be used as such by any prospective purchaser. The services, systems and appliances shown have not been tested and no guarantee as to their operability or efficiency can be given
Made with Metropix ©2011