



Guide Price
£525,000

Freehold

3x  2x  1x 

**Running Well, Runwell,
Wickford, Essex, SS11**

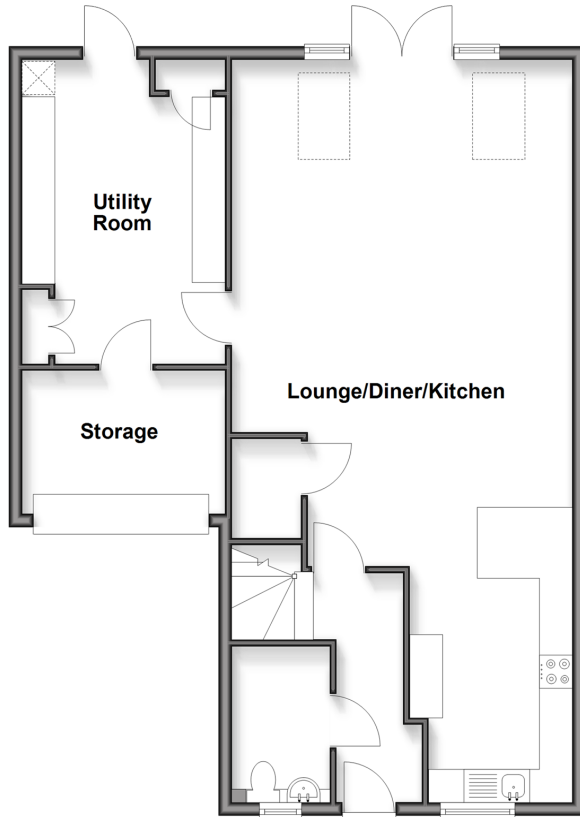
OVER 60?

Secure this property
for up to **59% less!**

 **DOUGLAS
ALLEN**
Helping you move forwards

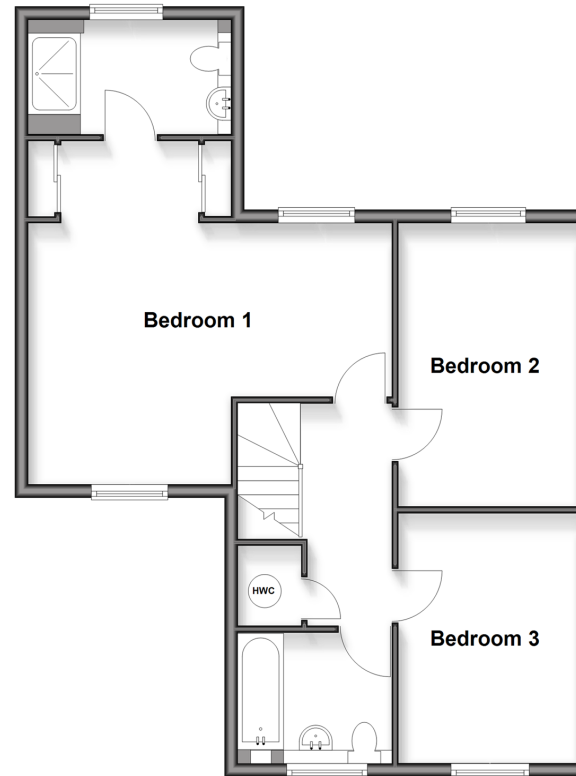
Ground Floor

Approx. 79.8 sq. metres (859.3 sq. feet)



First Floor

Approx. 64.1 sq. metres (690.4 sq. feet)



Accommodation

GROUND FLOOR

Hallway
Lounge/Diner/Kitchen: 36'8 x 16'1 (11.18m x 4.91m)
Utility Room: 15'0 x 9'10 (4.58m x 3.00m)
Cloakroom

FIRST FLOOR

Landing
Bedroom 1: 18'3 x 16'5 (5.57m x 5.01m)
Dressing Area
En-Suite Shower Room
Bedroom 2: 14'0 x 8'11 (4.27m x 2.72m)
Bedroom 3: 12'1 x 8'11 (3.69m x 2.72m)
Family Bathroom

OUTSIDE

Garage
Driveway
Front and Rear Gardens



Main features

- Situated on the ever popular St. Luke's development
- Beautifully decorated throughout
- Stunning open plan living to the ground floor
- Large utility room
- Great size bedrooms to the first floor with a master bedroom en-suite and dressing area
- Good size garden
- Garage and off street parking to the front



Nearest Schools

Primary Schools: Rettendon Primary 0.7 miles, Runwell Community Primary 1.1 miles, Hilltop Junior School 1.3 miles



Transport Information

Train Stations: Battlesbridge 1.3 miles, Wickford 1.7 miles, Woodham Ferrers 2.9 miles



Address

Running Well, Runwell, Wickford, Essex, SS11



Directions

For directions to this property please contact us.



Call Wickford Branch 01268 561287 ■ douglasallen.co.uk



■ Legal advice should be taken to verify fixtures/fittings, planning, alterations and/or lease details ■ Appliances & services are untested, dimensions are approximate and floor plans are not to scale
■ Through a Homewise Home For Life Plan people aged 60+ can secure this property for up to 59% less, by purchasing a Lifetime Lease

EPC RATING	CURRENT:	POTENTIAL:
	B(34)	A(93)

53413078/20260214/RP/BH