

# Wootton Road

## ST ANNES

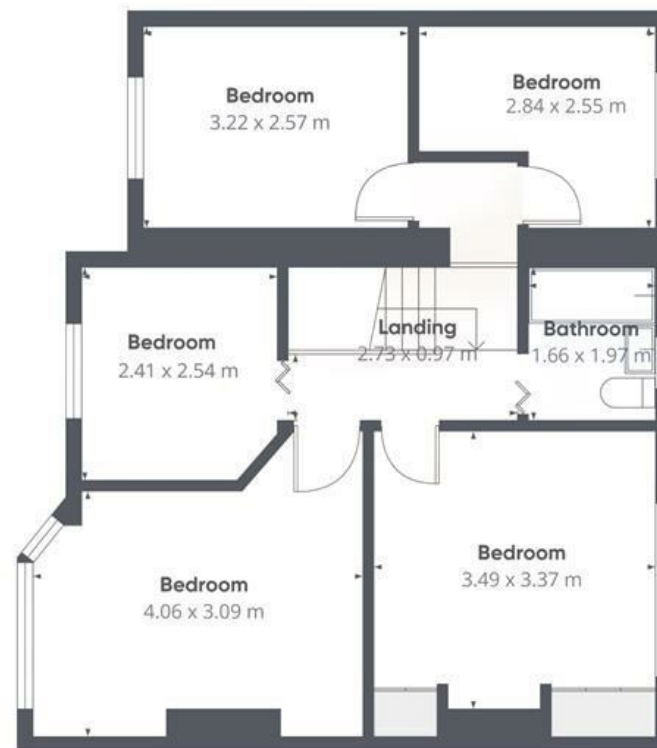
APPROXIMATE FLOOR AREA  
121.7 SQM / 1310 SQFT



### GROUND FLOOR



### FIRST FLOOR



Boardwalk

# Wootton Road , BRISTOL



£450,000



4 Bedrooms



BS4 4AL



1 Bathrooms

*"There's an effortless sense of space both inside and out, making the home feel open, airy, and welcoming in every season. The conservatory has been a particular highlight perfect for hosting friends or relaxing in the evening bathed in natural light. Step outside and you're moments away from peaceful walks towards the Avon river and woodlands offering a daily escape into nature, while the sweeping views of Troopers Hill provides a view that never fails to impress."*

