



Piffin Cottage Piffin Lane, Bishops Lydeard, Taunton TA4 3AS

£425,000





Situated in centre of this popular village at the foot of the Quantock Hills is this well presented 3 double bedrooomed end-terraced cottage with enclosed garden to rear and separate garage. No onward chain.





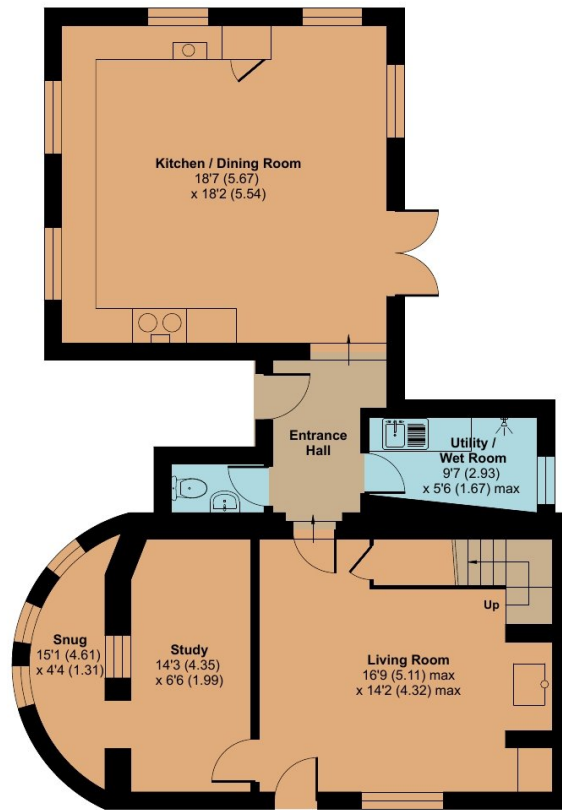
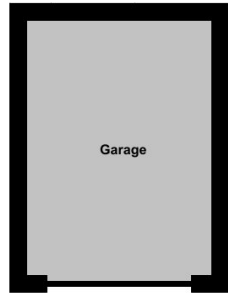
## Features

- Entrance Hall
- Living Room with inglenook fireplace and woodburner
- Study
- Snug
- Fitted Kitchen / Dining Room with French doors to garden
- Utility / Wet Room
- Cloakroom
- Master Bedroom
- 2 further double Bedrooms
- Family Bathroom
  
- Enclosed garden to rear
- Separate Garage
  
- Gas central heating
- Double glazing
- Council tax band B
- What3words:  
///proud.unhelpful.rate

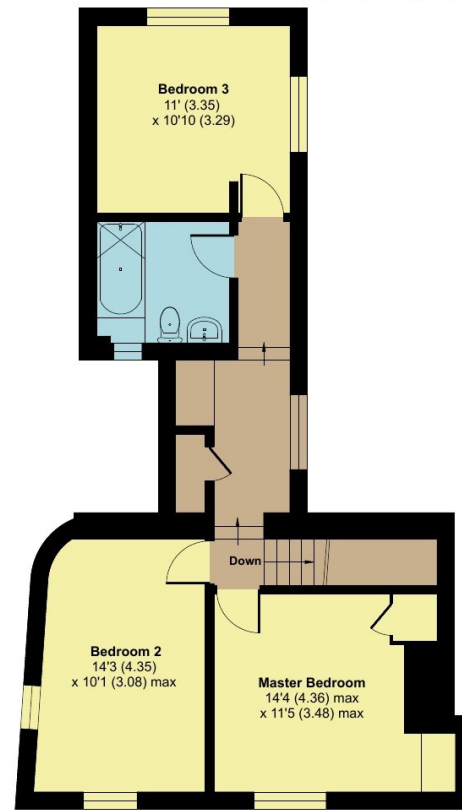
# Piffin Cottage, Piffin Lane, Bishops Lydeard, Taunton, TA4 3AS

Approximate Area = 1523 sq ft / 141.4 sq m (excludes garage)

For identification only - Not to scale



GROUND FLOOR



FIRST FLOOR



Floor plan produced in accordance with RICS Property Measurement 2nd Edition, Incorporating International Property Measurement Standards (IPMS2 Residential). © nichecom 2026. Produced for Robert Cooney. REF: 1462744



Viewing strictly through the selling agents:

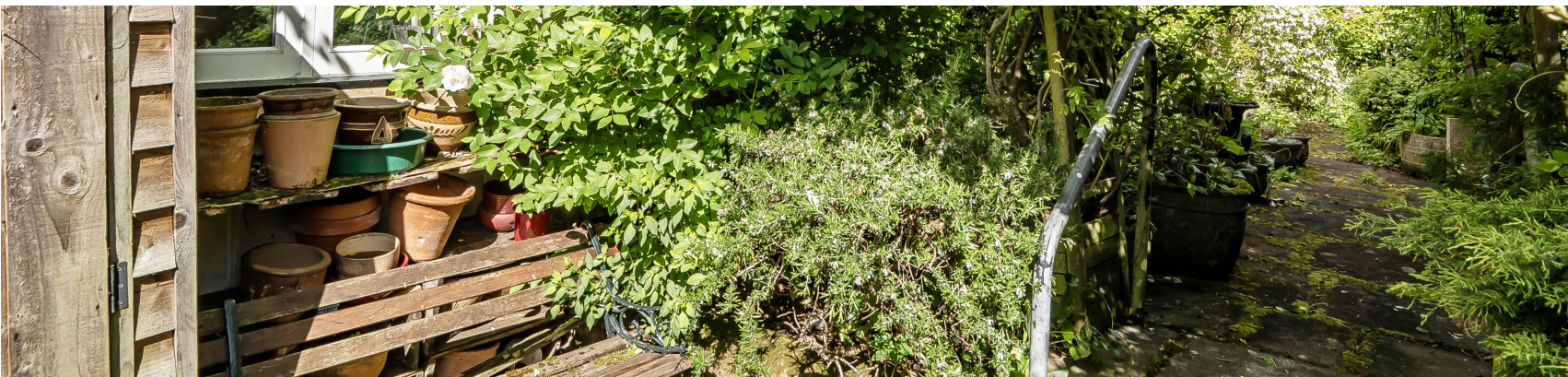
**Robert Cooney**

Corporation Street, Taunton, Somerset TA1 4AW

Telephone 01823 230 230

taunton@robertcooney.co.uk

www.robertcooney.co.uk



For clarification, we wish to inform prospective purchasers that: these particulars are set out as a general outline only for the guidance of intended purchasers, and do not constitute, nor constitute part of, an offer or contract; all descriptions, dimensions, references to condition and necessary permission for use and occupation, and other details, are given without responsibility and any intending purchasers should not rely on them as statements or representation of fact, but must satisfy themselves by inspection or otherwise as to the correctness of each of them; no person in the employment of Robert Cooney has any authority to make or give any representation or warranty whatever in relation to this property; we have not carried out a detailed survey nor tested the services, appliances and specific fittings.