



**21 Courtlage Walk, Kingsbridge,
TQ7 1QX
Guide Price £190,000**


MILLINGTON TUNNICLIFF

21 Courtlage Walk, Kingsbridge, TQ7 1QX



3



1



2



B

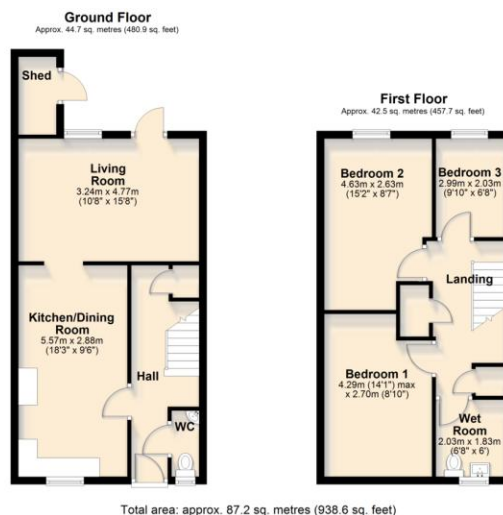


EPC

73



FLOORPLAN



CONTACT

19 Fore Street, Ivybridge,
Devon, PL21 9AB

EMAIL

info@millingtontunnicliff.co.uk

TEL

01752 896020

www.millingtontunnicliff.co.uk

Guide Price £190,000

SUMMARY

A 3 bedroom semi detached house located on a Local Authority estate on the edge of this popular South Hams town. Accommodation comprises of an entrance hall, cloakroom, kitchen/diner and living room on the ground floor, together with landing, the 3 bedrooms and wet room on the first floor. The house is Upvc double glazed and gas centrally heated. Externally there is rear garden and store shed. No chain. EPC C 73.

3 Bedroom Semi Detached House | Spacious Living Room | Kitchen/Diner | Cloakroom | Wet Room | Upvc Double Glazing | Gas Central Heating | Rear Garden With Store Shed | No Chain | EPC C 73