



Salisburys

Central Tavistock, PL19

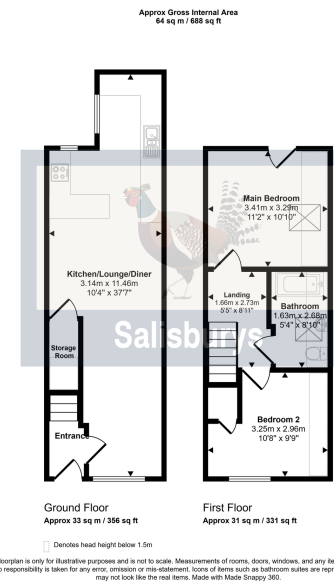
Guide Price £175,000

🛏️ 2 🚿 1 🚗 1



- Two Bedroom Apartment
- Allocated Parking Space
- Fully Double Glazed
- Balcony to Main Bedroom
- Upstairs Bathroom
- Town Centre Location
- Close to the High Street
- Gas Central Heating
- Open plan Living Room/ Kitchen
- CHAIN FREE





This two double bedroom duplex apartment is conveniently located within a short stroll to Tavistock High Street and all local amenities. The entrance to the apartment is on the first floor of Dancy Mews and offers an open plan Living/Dining Room and a Kitchen area fitted with a comprehensive range of base units with laminate worktop, single oven and hob with overhead extractor and space for a fridge freezer. The upstairs accommodation offers two double bedrooms with the main bedroom benefitting from a small balcony providing an outside seating area. The Bathroom is fitted with a bath and electric shower, a handbasin with vanity unit storage, w.c and velux skylight window. The apartment is neutrally decorated throughout and very well maintained and is offered with no onward chain.

Score	Energy rating	Current	Potential
92+	A		
81-91	B		
69-80	C	76 C	79 C
55-68	D		
39-54	E		
21-38	F		
1-20	G		

