



## Park View

Langley Moor, Durham DH7 8JU

- Available September 2026
- Modern Terraced House
- Modern Kitchen & Bathroom
  - Open Views To Front
- Students or Professionals
- Fully Furnished
- 2 Bedrooms
  - Yard
- EPC Rating C

£900 PCM

**Council Tax Band: A**  
**EPC Rating: C**

**FULL DESCRIPTION**

**\*\*STUDENTS & PROFESSIONALS WELCOME\*\* \*\*AVAILABLE AUGUST 2025, FULLY FURNISHED\*\*** Available September 2026, we are delighted to offer this FULLY REFURBISHED 2 bedroom terraced house, ideally suited for tenants working or studying in Durham City due to the fantastic transport links and easy walking access. Internally, the property comprises lounge, refitted kitchen, rear lobby & modern bathroom to the ground floor, and to the 1st floor a central landing provides access to the 2 spacious double bedrooms, the larger having open views to the front. To the front of the property is an enclosed courtyard area with pleasant views, and to the rear of the property there is an enclosed yard for storage of bins and bicycles etc. plus a brick-built storage shed. The property is recently comprehensively modernised with new kitchen, bathroom, decor & flooring throughout. The boiler is covered by a service contract so there's no issues with slow repairs! EPC Rating C.

**LOUNGE**

13'11" x 13'10"

**KITCHEN**

10'11" x 8'5"

**BATHROOM**

7'4" x 5'10"

**BEDROOM 1**

12'10" x 12'8"

**BEDROOM 2**

9'10" x 7'9"

**YARD**

**ADDITIONAL INFORMATION**

Available 01st September 2026, professionals & students welcome, available fully furnished with option of extra furniture - landlord is flexible. Price £900pcm exd. bills, £1038 deposit.

**EPC.**

EPC Rating - C

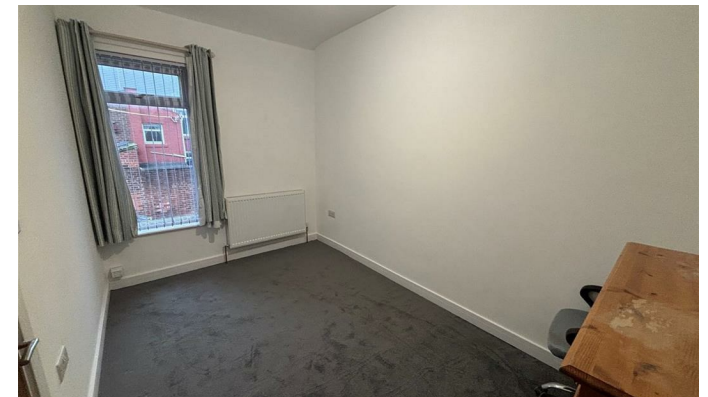
EPC Link - <https://find-energy-certificate.service.gov.uk/energy-certificate/9528-6060-7259-0808-7944>

**IMPORTANT INFORMATION**

Please note that all sizes have been measured with an electronic measure tape and are approximations only. Under the terms of the Misdescription Act we are obliged to point out that none of these services have been tested by ourselves. We cannot vouch that any of the installations described in these particulars are in perfect working order. We present the details of this property in good faith and they were accurate at the time of which we inspected the property. Stuart Edwards for themselves and for the vendors or lessors of this property whose agents they are, give notice, that: (1) the particulars are produced in good faith, are set out as a general guide only, and do not constitute any part of a contract; (2) no person in the employment of Stuart Edwards has the authority to make or give any representation or warranty in relation to this property.

**CLIENT MONEY PROTECTION.**

Bluepace (Durham) Limited Trading as Stuart Edwards Estate Agents is part of the Money Shield Client Money Protection scheme.



1 & 2 Blue Coat Buildings, Claypath,  
Durham, County Durham, DH1 1RF

0191 3848440  
[enquiries@stuartedwards.com](mailto:enquiries@stuartedwards.com)  
[www.stuartedwards.com](http://www.stuartedwards.com)

Agents Note: Whilst every care has been taken to prepare these particulars, they are for guidance purposes only. All measurements are approximate and for general guidance purposes only and whilst every care has been taken to ensure accuracy, they should not be relied upon and potential buyers/tenants are advised to recheck the measurements.