



Aspinall Road, SE4

£2,850 Per calendar month

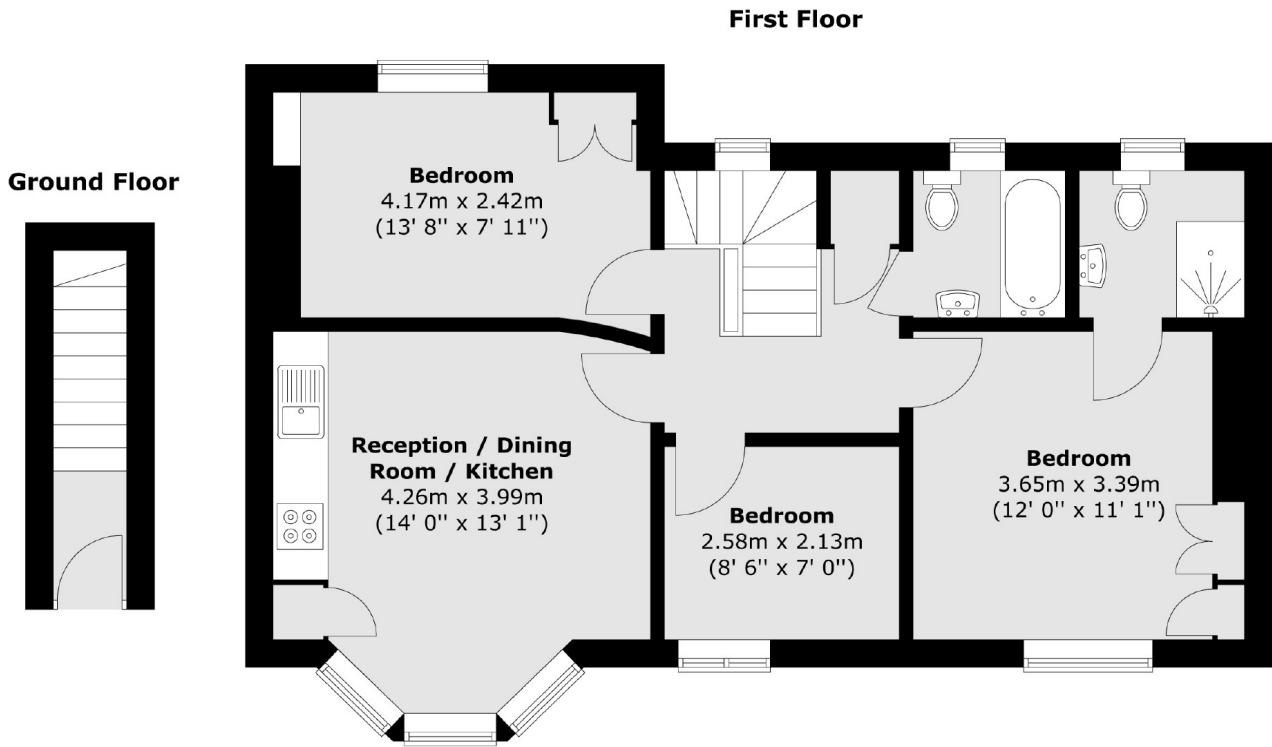
A three bedroom top floor Victorian conversion flat including two bathrooms, modern finish throughout and ample storage. Suitable for two professional sharers, a couple or a couple plus one.

Situated on Aspinall Road this property is ideally located a short distance to Brockley Station and Nunhead Station as well as all amenities.

Features

- Victorian Conversion
- Three Double Bedrooms
- Two Bathrooms
- Modern Throughout
- Unfurnished
- Close To Station

Aspinall Road, London, SE4



Total area (approx.) : 61.7 sq. m (664 sq. ft)