

Paley Street

Maidenhead • Berkshire • SL6 3JN

Guide Price: £1,400,000



coopers
est 1986

Paley Street

Maidenhead • Berkshire • SL6 3JN

An exceptional and thoughtfully designed gated three bedroom detached home, finished to a high specification throughout and located on Paley Street, one of Maidenhead's most desirable semi-rural settings. The centrepiece of the home is the impressive open plan kitchen, living and dining room, featuring a bespoke Häcker kitchen with generous storage and work surfaces. Bi-folding doors open onto the garden, filling the space with natural light and creating a seamless indoor-outdoor connection. A separate utility room and cloakroom add further practicality along with three well proportioned bedrooms. The main bedroom benefits from an en-suite shower room, while the remaining bedrooms are served by a modern family bathroom with Hansgrohe fittings. The property further benefits from a landscaped south facing garden, a detached double garage with EV charging point, a separate plant room, and a large driveway for numerous vehicles.

Newly built home

Sweeping field views

Private & gated plot

Häcker kitchen

Double garage & EV charger

Spacious open plan living

Underfloor heating throughout

South facing garden

Warranties & guarantees in place

Desirable semi-rural location

These particulars are intended as a guide and must not be relied upon as statements of fact. Your attention is drawn to the Important Notice on the last page.

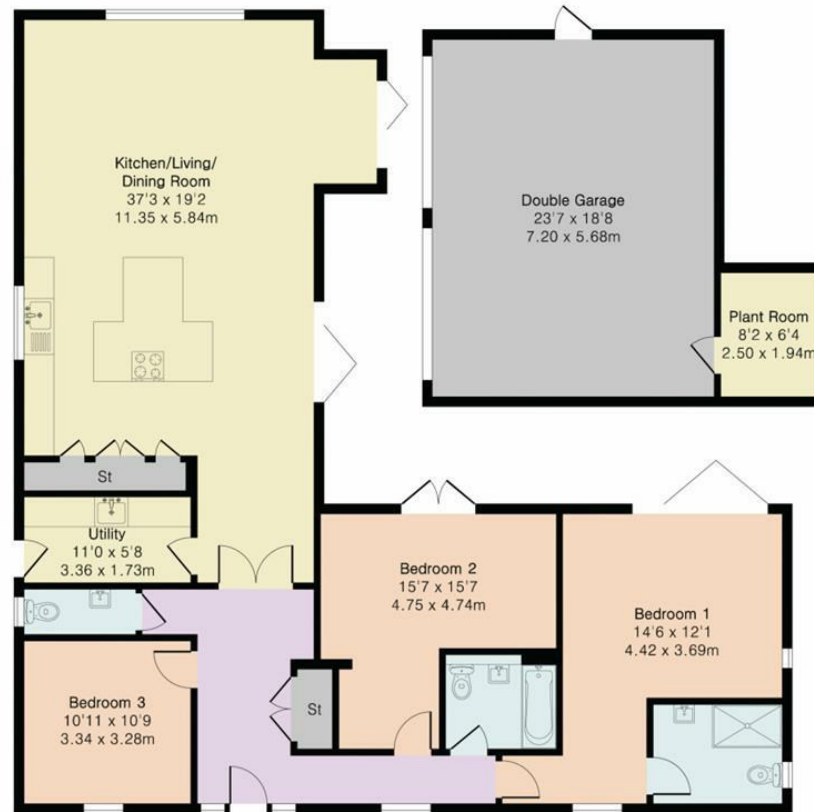




Little Oak, Paley Street, Maidenhead, SL6

Approximate Area = 2116 sq ft / 196.6 sq m

For identification only - Not to scale



Floor plan produced in accordance with RICS Property Measurement 2nd Edition. Although Pink Plan Ltd ensures the highest level of accuracy, measurements of doors, windows and rooms are approximate and no responsibility is taken for error, omission or misstatement. These plans are for representation purposes only and no guarantee is given on the total square footage of the property within this plan. The figure icon is for initial guidance only and should not be relied on as a basis of valuation.

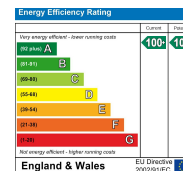


coopers
est 1986

**42 Queen Street, Maidenhead,
SL6 1HZ**

maidenhead@coopersresidential.co.uk

CoopersResidential.co.uk



Important Notice: These particulars, whilst believed to be accurate are set out as a general outline only for guidance and do not constitute any part of an offer or contract. Intending purchasers should not rely on them as statements or representation of fact, but must satisfy themselves by inspection or otherwise has the authority to make or give any representation or warranty in respect of the property.