



14 Wilkie Close  
Kettering, NN15 7RD



Simpson & Partners

Located in a cul-de-sac, this impressive detached house offers a perfect blend of modern living and convenience that will appeal to discerning families and professionals. The property features four double bedrooms, each thoughtfully equipped with built-in wardrobes and air conditioning, ensuring comfort and practicality throughout the year while maximizing storage space and maintaining a clean, contemporary aesthetic.

The heart of the home is the brand new open-plan kitchen/dining room, showcasing a stylish breakfast bar perfect for casual meals and family gatherings, with doors that lead directly to the garden, creating an ideal space for entertaining friends and family or simply enjoying a quiet moment outdoors in your own peaceful retreat. This seamless indoor-outdoor connection floods the interior with natural light and extends your living space during warmer months.

The property boasts two well-appointed bathrooms, ensuring facilities for family and guests alike while eliminating the morning rush and providing convenience for busy households. For those who value efficiency and sustainability, this house is equipped with solar panels and holds an impressive A rating on its Energy Performance Certificate, making it not only environmentally friendly but also remarkably cost-effective, providing substantial savings on energy bills year after year.

The three reception rooms provide versatile spaces that can be tailored to suit your unique lifestyle, whether you need a cosy lounge for relaxation, a formal dining area for special occasions, or a dedicated playroom and office space for modern working from home. Parking is a breeze with generous space for up to four vehicles including the double garage, a rare find in residential properties that adds significant value and provides secure storage for vehicles and equipment.

The location is truly superb, with shops, schools, nurseries, a train station, parks and a running track all within comfortable walking distance.

Price £460,000



4



2

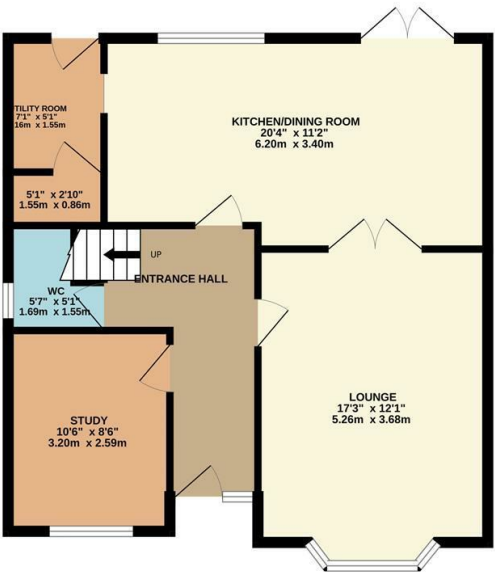


3

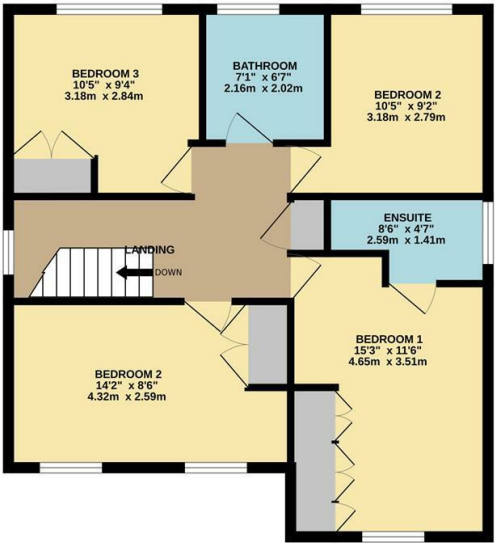


Simpson & Partners

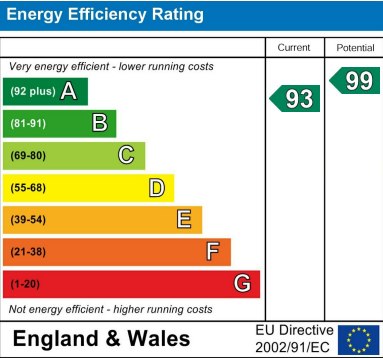
GROUND FLOOR



1ST FLOOR



Whilst every attempt has been made to ensure the accuracy of the floor plan contained here, measurements of doors, windows, rooms and any other items are approximate and no responsibility is taken for any error, omission, or mis-statement. The plan is copyright to Simpson and Partners and is for illustrative purposes and should only be used as such by any prospective purchaser. The services, systems and appliances shown have not been tested and no guarantee as to their operability can be given. Made with Metropix ©2026



When you buy with Simpson and Partners, you know **you'll be in safe hands**. From the moment you walk through our doors, we'll make you **feel truly welcome**. Our sales consultants and financial advisors will take you through **every step of the process**, offering **free expert advice** along the way, from help choosing the right mortgage and insurance through to finding your conveyancer. And if you need help selling your home too, **with over 20 years of local experience, you can trust us to get you moving**.



**Simpson  
& Partners**

Making Every  
Journey Personal



01536 518200

[kettering@simpsonandpartners.co.uk](mailto:kettering@simpsonandpartners.co.uk)

<https://www.simpsonandpartners.co.uk/>

1 Silver Street, Kettering, Northants, NN16 0BN