

Kennedys'

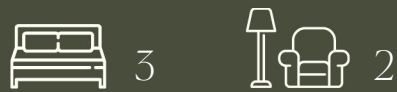
01737 817718

kennedys-ipa.co.uk
@kennedysipa

58, Tadworth Street
Tadworth
KT20 5QZ

A beautiful three bedroom cottage,
located in between both Tadworth and
Walton on the Hill and walking
distance of both villages and their local
shops and amenities.

£695,000



- Stunning 25' (7.62m) kitchen/dining/family room
- Off street parking for two cars secured by a five bar gate
- Walking distance to both Tadworth & Walton on the Hill
- 3 Bedrooms
- Separate reception room
- Well established attractive rear gardens to the front and rear
- Downstairs shower room/cloakroom
- Walking distance to mainline train



PROPERTY DESCRIPTION

We are delighted to offer this beautiful three bedroom cottage, located in between both Tadworth and Walton on the Hill and walking distance of both villages and their local shops and amenities. This charming home has features such as wooden floors, shutters to most of the windows, gas central heating and double glazed windows. The accommodation comprises entrance hall, lounge with fireplace, downstairs shower room/cloakroom, fitted kitchen with appliances which is open plan to the stunning 25' (7.62m) dining/family room with stable door leading out to the side garden and graveled parking area. The first floor offers three double bedrooms and a family bathroom with free standing bath and separate shower cubicle.

To the outside there are well established gardens to the front and rear and off street parking for two cars secured by a five bar gate.

The village of Tadworth is within easy access and is well served by local shops and facilities including independent traders such as butchers, fishmongers, bakers, dry cleaners, vets, and florist as well as banks, restaurants, village supermarket and mainline station to London. Tadworth Primary School is approx. half a mile and the area is also served by popular private and secondary schooling as well as several local nurseries and recreational facilities that are located at venues such as Kingswood Golf Club, Surrey Downs Golf Club, David Lloyd in Epsom and Cheam, RAC at Woodcote Park and others besides.







LOCAL AREA

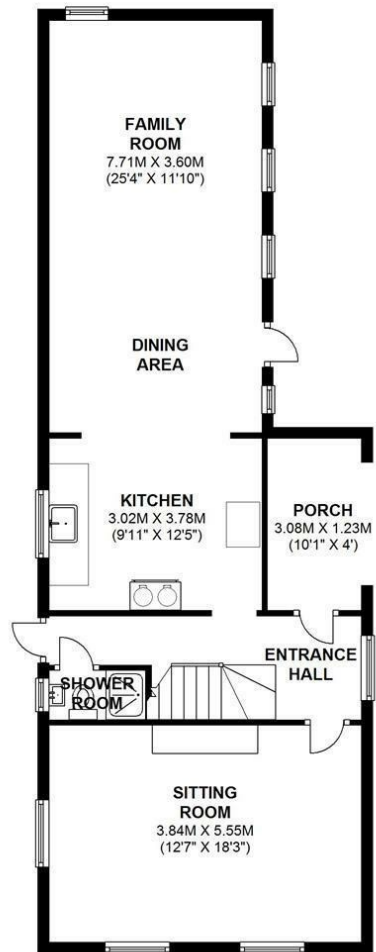


Walton on the Hill is a small, picturesque village, with the Mere Pond being at its heart, whilst being surrounded by Walton Heath and served by a number of local traders and a local supermarket. With three pubs, two restaurants, two hair salons, a tea room overlooking the pond, a highly sought after primary school, two churches and Walton Heath Golf Club are just a few of the amenities available.

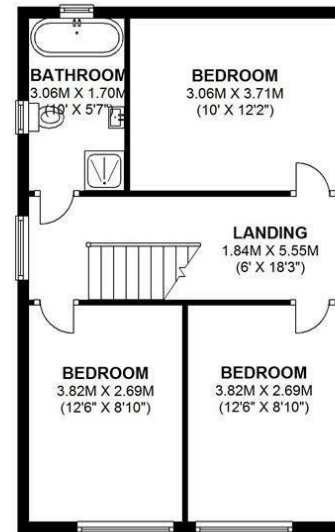
For further information and to arrange a viewing please contact a member of our Sales Team on 01737 817718.

A white, stylized handwritten signature or logo on a dark background.

GROUND FLOOR
APPROX. 77.7 SQ. METRES (836.4 SQ. FEET)



FIRST FLOOR
APPROX. 49.1 SQ. METRES (528.2 SQ. FEET)



TOTAL AREA: APPROX. 126.8 SQ. METRES (1364.5 SQ. FEET)

Energy Efficiency Rating	
	Potential
Very energy efficient - lower running costs	
172 plus) A	
(81-91) B	
(69-80) C	
(55-68) D	
(39-54) E	
(21-38) F	
(1-20) G	
Mid energy efficient - higher running costs	
England & Wales	
EU Directive 2002/91/EC	

Current: **81**

Potential: **54**

58, Tadworth Street

If you would like to arrange a viewing, please call a member of the Kennedys sales team on 01737 817718

TENURE: Freehold

EPC RATING: E

COUNCIL: Reigate & Banstead

TAX BAND: E

These particulars, whilst believed to be accurate are set out as a general guide only for guidance and do not constitute any part of an offer or contract. Intending purchasers should not rely on them as statements of representation of fact, but must satisfy themselves by inspection or otherwise as to their accuracy. No person in Kennedys' has the authority to make or give any representation or warranty in respect of the property.



01737 817718

kennedys-ipa.co.uk @kennedysipa info@kennedys-ipa.co.uk

48 Walton Street, Walton on the Hill,
KT20 7RT