



49 Oakdale Glen, Harrogate

£225,000



YOUR AWARD
WINNING AGENT

#DARINGTOBEDIFFERENT



An immaculately presented two bedroom first floor apartment, situated within the highly sought after Duchy area of Harrogate and enjoying a quiet cul-de-sac position with a pleasant leafy outlook. The property has been fully renovated and refurbished to an outstanding standard, revealing stylish and modern accommodation throughout, together with the rare benefit of a private garden, off-street parking and a single garage. This attractive apartment offers light and well proportioned accommodation, ideally suited to a range of purchasers, and is conveniently located close to Oakdale Golf Club and within easy reach of Harrogate town centre.

OUTSIDE

The property benefits from an attractive and easy to maintain private garden.

There is off-street parking together with a single garage.

LOCATION

The property is situated within the highly desirable Duchy area of Harrogate, a peaceful and leafy residential setting close to Oakdale Golf Club and within easy reach of Harrogate town centre and its wide range of amenities.

Council Tax band: B Tenure: Leasehold EPC Energy Efficiency Rating: D

EPC Environmental Impact Rating: D



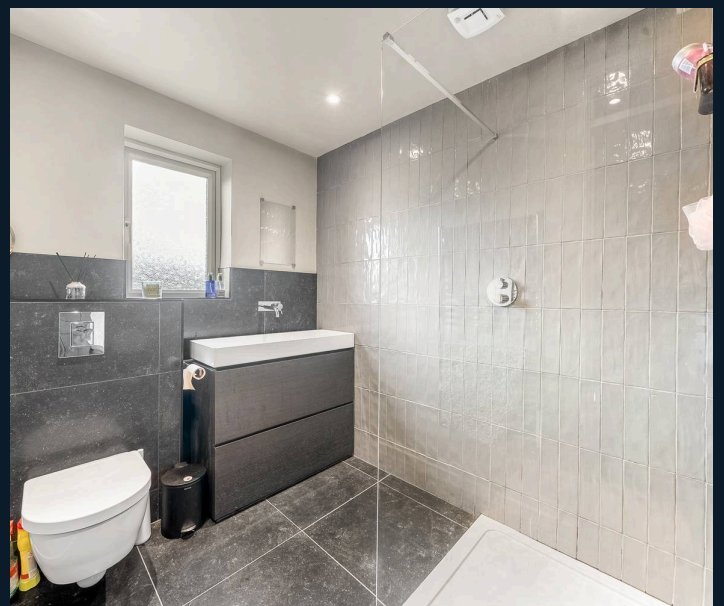
FIRST FLOOR

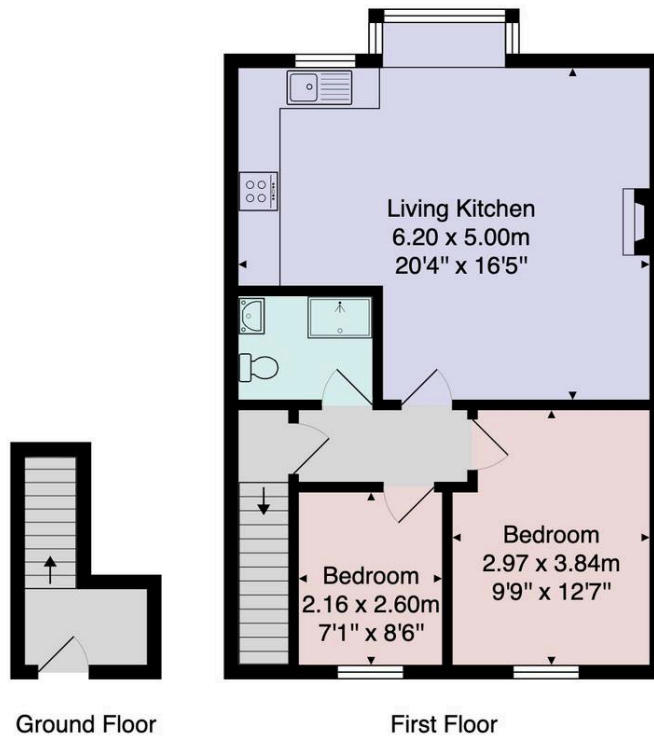
The accommodation opens into a private entrance hall with access to a useful loft storage space.

There is a superb open plan living area providing clearly defined sitting and dining spaces, together with a modern fitted kitchen equipped with a range of stylish units and integrated appliances.

The principal bedroom is a good sized double room with fitted wardrobes, whilst the second bedroom benefits from a large storage cupboard.

The accommodation is served by a modern shower room fitted with a contemporary suite comprising a large walk-in shower, WC and washbasin.





Total Area: 60.7 m² ... 653 ft²

All measurements are approximate and for display purposes only.

No liability is accepted by either the agency or Box Property Solutions Ltd as to the exact measurements of the rooms.
Box Property Solutions Ltd retains the copyright on this plan and allows agents to use it with agreed permission.

