



# ASHBURY

4 Bedrooms

House

Located in London

£900,000



[info@ashbury.london](mailto:info@ashbury.london)

0207 362 7888



# 10 Trevor Road

London | | SW19 3PW



A well located four bedroom, two bathroom mid terraced Victorian house with private garden and within walking distance of highly regarded schools and Wimbledon station.

This well proportioned freehold house consists of three bedrooms plus a study/fourth bedroom, two bathrooms, a good sized double length reception room and separate kitchen opening onto a private garden.

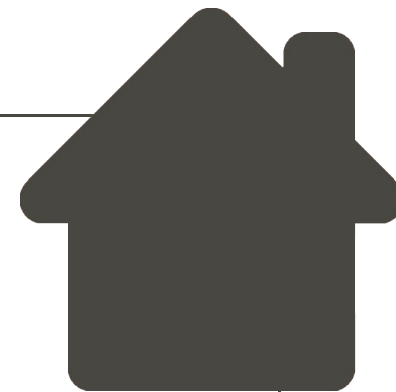
Trevor Road is a quiet, desirable residential road situated moments from the highly regarded and sought after Dundonald Primary and Wimbledon Chase Primary schools. Also nearby are the wonderful array of shops, restaurants, cafes and other local amenities of Wimbledon Town. The closest station is Wimbledon (District Line, Tram, South Western Railway).

# 10 Trevor Road

£900,000 Freehold

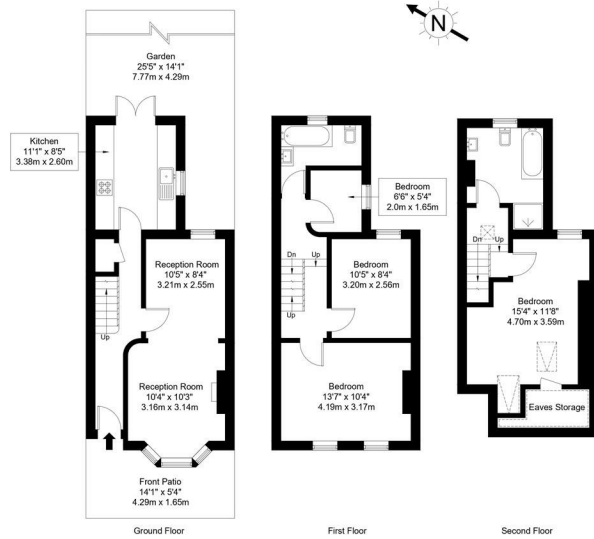
- Four Bedrooms
- Double Length Reception Room
- Private Garden

- Two Bathrooms
- Separate Kitchen
- Freehold House



## Trevor Road, SW19 3PW

Approx Gross Internal Area = 102.2 sq m / 1102 sq ft  
(Including Eaves)



The Floor plan is not to scale and measurements and areas shown are approximate and therefore should be used for illustrative purposes only. The plan has been prepared in accordance with the RICS code of Measuring Practice and whilst we have confidence in the information produced it must not be relied on. Maximum lengths and widths are represented on the floor plan. If there is any aspect of particular importance, you should carry out or commission your own inspection of the property.  
Copyright © Blueplan

# ASHBURY

Parkshot House 5 Kew Road  
Richmond  
TW9 2PR

0207 362 7888

info@ashbury.london

**Council Tax Band: E**

**Local Authority: London Borough of Merton**

Agents Note: Whilst every care has been taken to prepare these particulars, they are for guidance purposes only. All measurements are approximate and are for general guidance purposes only and whilst every care has been taken to ensure their accuracy, they should not be relied upon and potential buyers/tenants are advised to recheck the measurements.

