



North Drive, TW3

£1,875 Per calendar month

A modern apartment spanning over 750 sq ft, featuring two double bedrooms, a contemporary bathroom, and a bright open plan living area with a private balcony, set within a well maintained development close to amenities and transport links.

North Drive is ideally located near Isleworth mainline and Hounslow East stations, the property is close to Hounslow High Street, offering excellent shops, dining, transport links, and access to reputable local schools within walking distance.

Features

- Two Double Bedrooms
- Modern Bathroom
- Open-Plan Living
- Private Balcony
- Over 750 Sq.Ft
- Excellent Transport Links



North Drive, TW3

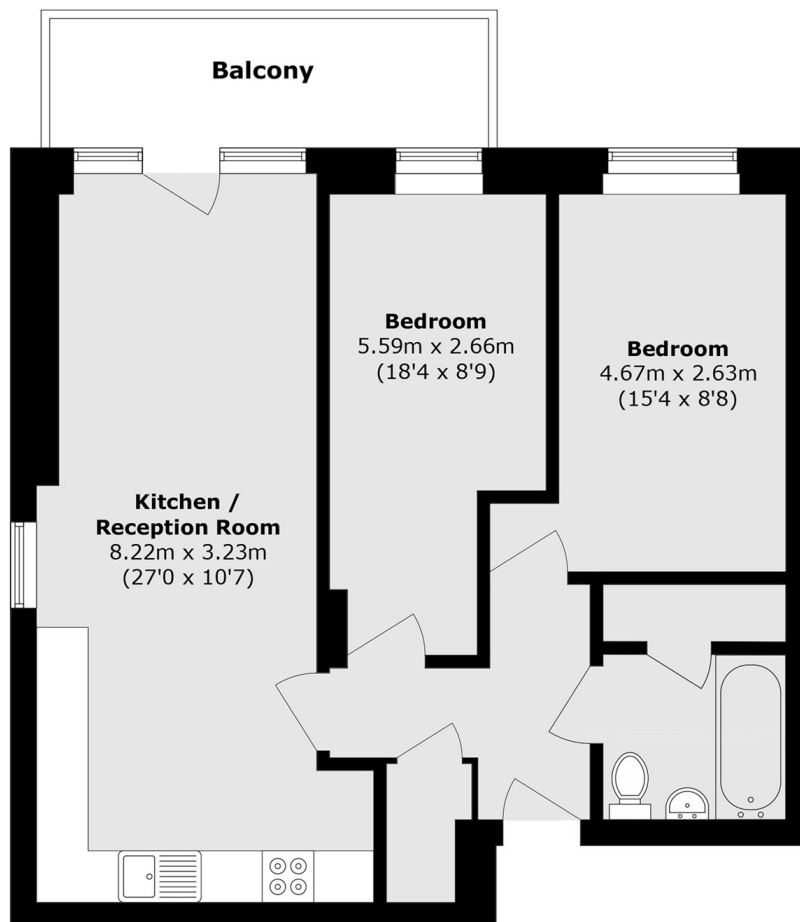
This modern apartment offers a spacious open plan kitchen and reception area, featuring sleek cabinetry, integrated appliances, and ample natural light, with direct access onto a private balcony ideal for relaxing or entertaining guests comfortably.

The property comprises two well proportioned double bedrooms, both offering comfortable accommodation and versatility, alongside a modern bathroom finished with contemporary fittings, clean lines, and practical storage, creating a stylish and functional living environment overall.

Extending over 750 square feet, this attractive apartment is set within a well maintained development, benefiting from a pleasant residential setting, secure entry, and convenient access to local amenities, transport links, and nearby green spaces.



North Drive,
Hounslow, TW3



Total area (approx.): 70.0 sq. m (753.4 sq. ft)

Balcony area (approx.): 7.6 sq. m (81.8 sq. ft)