



St. Anns Terrace, NW8

£535 Per week

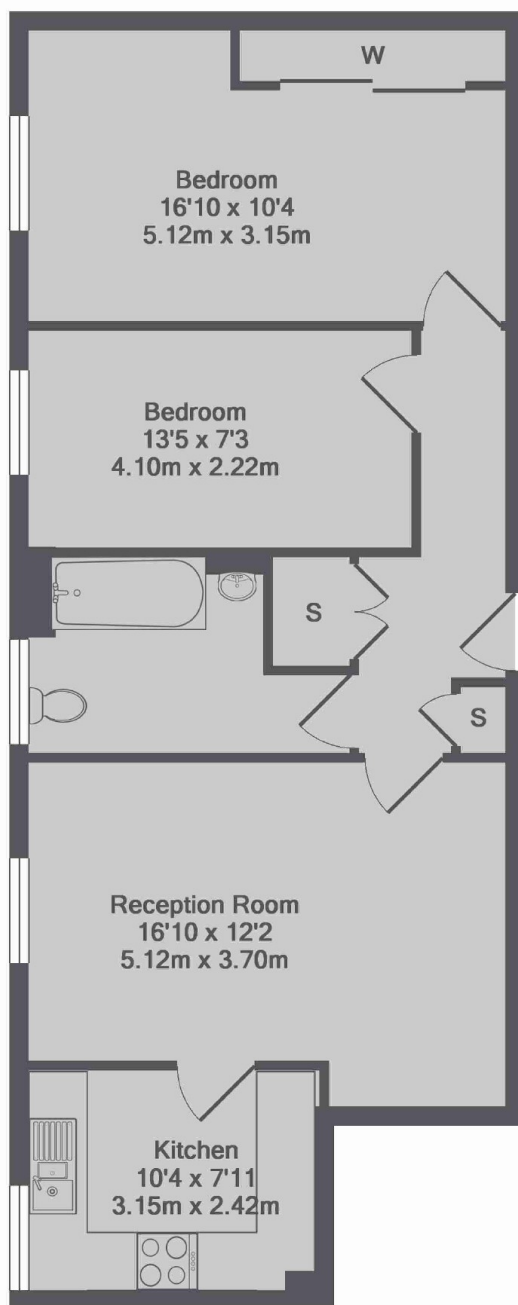
A spacious two bedroom apartment on the second floor in a purpose built block next to St John's Wood High Street. Bright reception room with wood floors, separate kitchen, two double bedrooms and family bathroom with shower over bath.

Portland House is conveniently situated at the North West end of St John's Wood High Street which offers a range of shops, restaurants, cafés and bars and St John's Wood Underground Station is within 200 metres.

Features

- Two Double Bedrooms
- Second Floor Apartment
- Lift
- Wood Floors In Reception
- Separate Kitchen
- Great Location

St. Anns Terrace, London, NW8



Portland House NW8
Total Approx. Floor Area 688 Sq.Ft. (63.9 Sq.M.)