



Lakeside Drive, NW10

£320,000

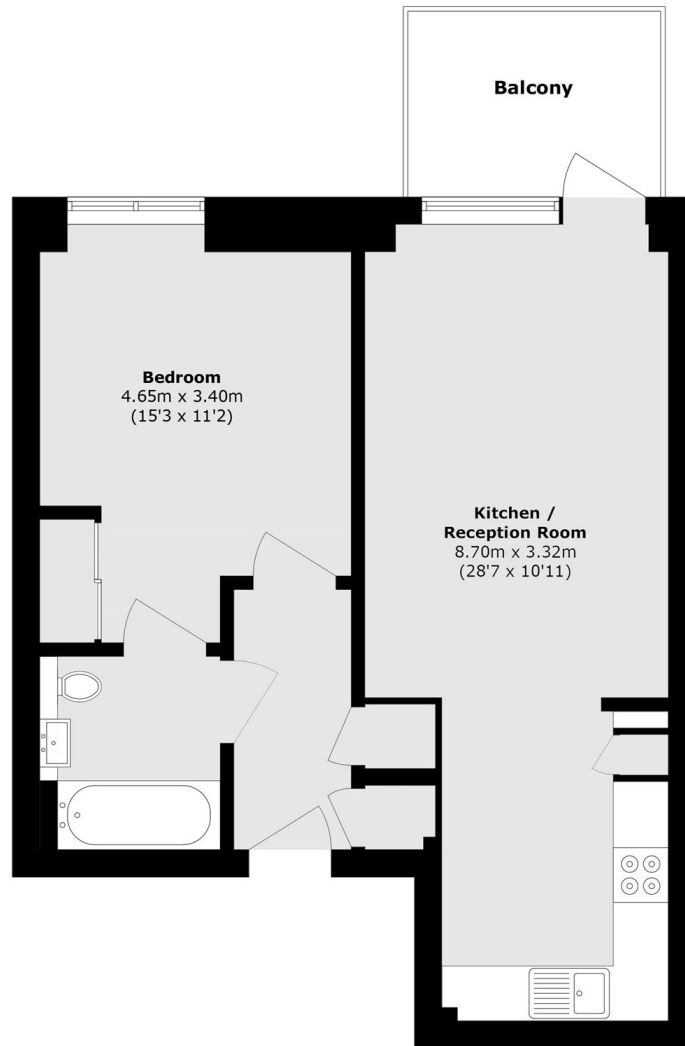
A seventh floor apartment which spans over 550 sq ft of living space. This one bedroom apartment has a large open plan kitchen living areas, floor to ceiling windows which allows a huge amount of light and a large balcony overlooking the city of london.

Abbotsford Court is located half a mile from both Park Royal and Hanger Lane stations with easy access to the A40.

Features

One Bedroom
Seventh Floor
Underfloor Heating
Balcony
Communal Gardens
Views over London

Lakeside Drive, London, NW10



Total area (approx.): 51.4 sq. m (553.2 sq. ft)

Balcony area (approx.): 5.6 sq. m (60.2 sq. ft)