



3  1  1 

Glencarron, Bengate Road, Fleet PE12 8NL

£299,950

BELVOIR!



Key Features

- > SEMI RURAL LOCATION
- > DETACHED BUNGALOW
- > THREE BEDROOMS
- > CONSERVATORY
- > LARGE DRIVE AND GARAGE
- > PLOT APPROX 0.45 ACRE
- > Tenure: Freehold
- > EPC rating E

This detached bungalow presents a distinguished opportunity for those seeking a spacious and adaptable home set within a semi-rural environment. The property encompasses approximately 0.45 acres, offering generous gardens and ample outdoor space, making it a suitable choice for a range of lifestyle needs.

Internally, the residence comprises three bedrooms, a fitted kitchen, and a bathroom with separate WC, designed to meet practical requirements. The inclusion of a conservatory leads to additional versatile living space, ideal for relaxation or entertaining. The property includes oil fired heating, ensuring a reliable and efficient heat source for the home. The large drive and garage provide extensive off-street parking and storage solutions, with further utility and store areas supporting everyday organisation.

Some updating is required, which presents an appealing prospect for buyers wishing to personalise the property to their own preferences and standards.

Local area

Situated in Fleet, this detached bungalow benefits from a semi-rural location while still offering access to local amenities and transport links. The area is known for its peaceful surroundings and community environment, providing a balanced lifestyle with both convenience and tranquillity.





ENTRANCE PORCH

20'9" x 6'7" (6.3m x 2m)

UPVC double glazed door, UPVC double glazed window to front elevation, wall mounted heater. Doors to:

GARAGE

20'0" x 10'5" (6.1m x 3.2m)

Roller door, window to the rear.

STORE

6'2" x 5'9" (1.9m x 1.8m)

Countertop, radiator.

UTILITY

8'0" x 6'1" (2.4m x 1.9m)

Window to the rear elevation, Belfast style sink, floor mounted oil-fired boiler.

KITCHEN

11'9" x 11'4" (3.6m x 3.5m)

Window to the rear elevation, fitted base and wall units, space for cooker, washing machine, serving hatch.

Door to pantry, window to the rear elevation.

INNER HALLWAY

Part glazed door to the side elevation.

LOUNGE

22'1" x 11'11" (6.7m x 3.6m)

Window to the side elevation, feature fireplace with built in dressers, wall mounted heater. French doors to:

CONSERVATORY

15'5" x 10'4" (4.7m x 3.1m)

UPVC construction on a low brick base, French doors to the side elevation, electric heaters, tiled floor.

BEDROOM 1

12'0" x 10'4" (3.7m x 3.1m)

Window to the front and side elevation, built in cupboard, radiator.







BEDROOM 2

11'7" x 9'9" (3.5m x 3m)

Window to the front elevation, radiator, built in storage cupboard.

BEDROOM 3

9'10" x 8'0" (3m x 2.4m)

Window to the side elevation, radiator.

WC

Window to the side elevation, WC.

BATHROOM

Window to the side elevation, two-piece suite comprising of wash hand basin, panelled bath, electric shower over, radiator. Airing cupboard housing hot water tank.

EXTERNALLY

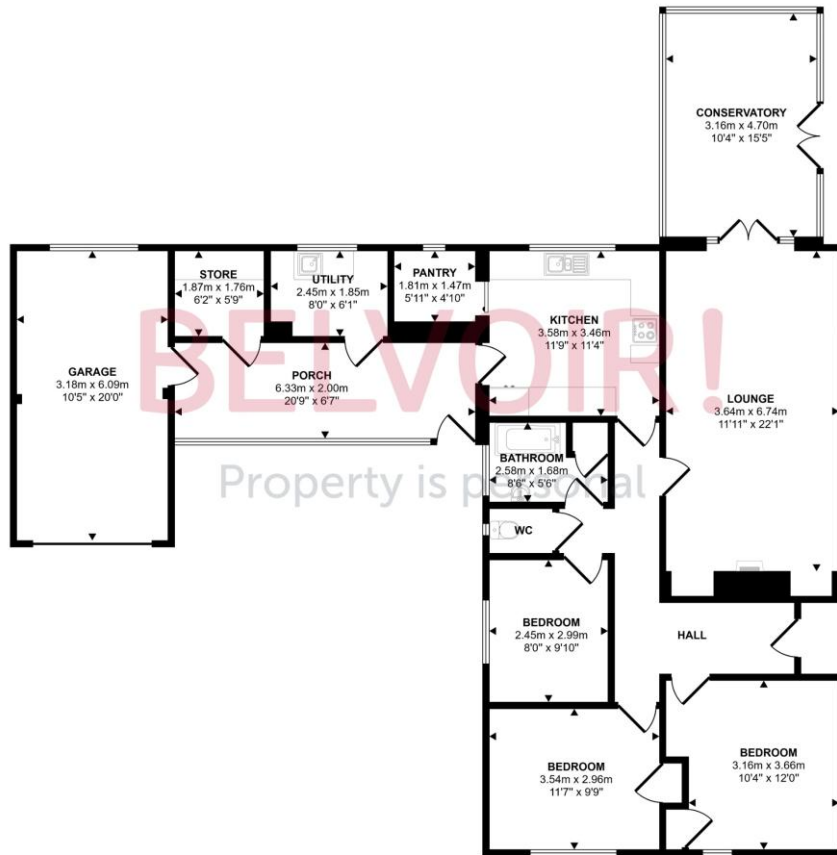
FRONT: Ample off-road parking leading to single garage, storage shed.

SIDES and REAR: Generous gardens mainly laid to lawn, enclosed by hedging. Total plot extending to approximately 0.45 acre. Open farmland to front and rear.



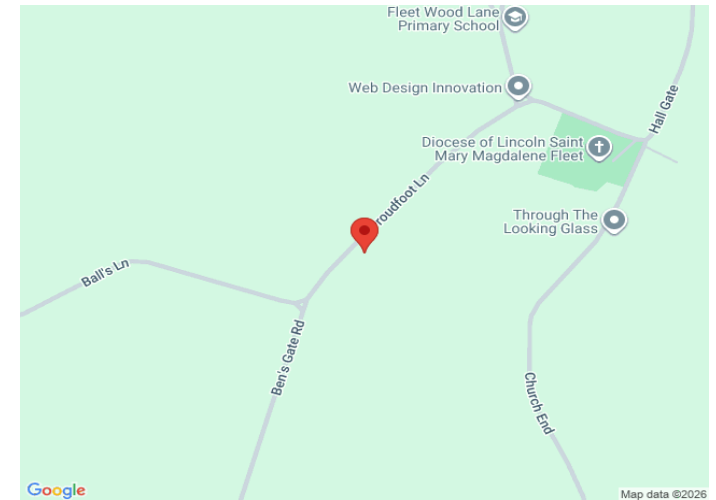
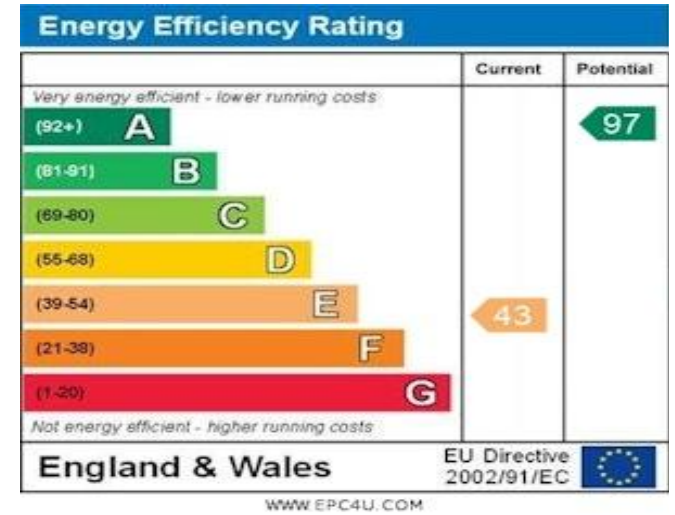


Approx Gross Internal Area
154 sq m / 1656 sq ft



Floorplan

This floorplan is only for illustrative purposes and is not to scale. Measurements of rooms, doors, windows, and any items are approximate and no responsibility is taken for any error, omission or mis-statement. Icons of items such as bathroom suites are representations only and



Contact us today to arrange a viewing...

www.belvoir.co.uk/spalding-estate-agents/

BELVOIR!

01775 722475