



**15 Hume Court South Road, Hythe - CT21 6AD**

Guide Price **£240,000**

Approximate Gross Internal Area = 73 sq m / 786 sq ft  
Garage = 24 sq m / 258 sq ft

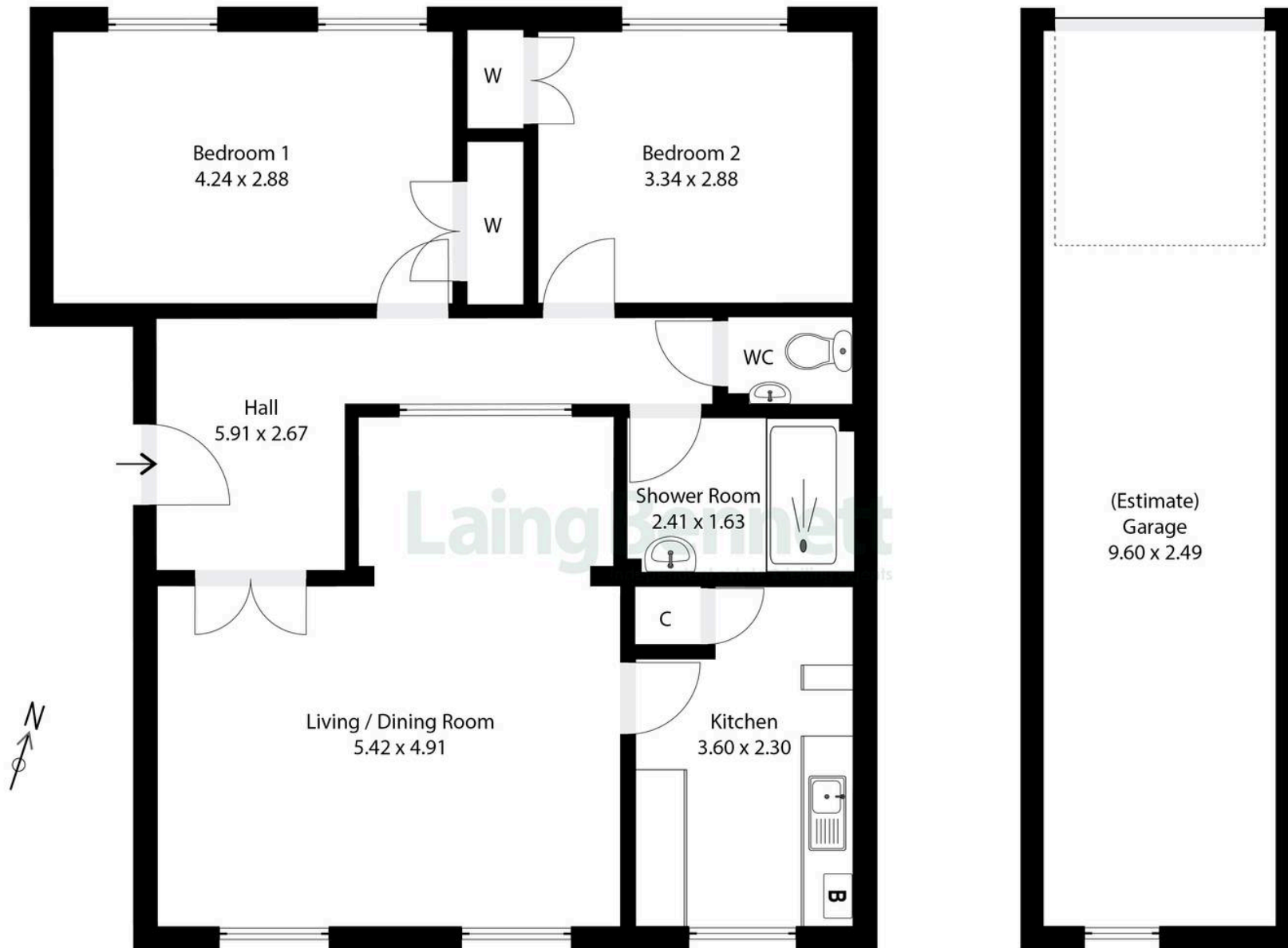


Illustration for Identification purposes only. Measurements are approximate. Dimensions given are between the widest points.  
Not to scale. Outbuildings are not shown in actual location.  
© Unauthorised reproduction prohibited - chriskemps@hotmail.com



## 15 Hume Court South Road

Hythe

This well-presented first floor apartment is close to the seafront with far reaching view of the sea. The apartment offers a comfortable, easy-to-maintain home that's perfect for first-time buyers, downsizers, or investors. The bright reception room sets the tone for the property—warm, spacious, and inviting – while both double bedrooms offer practical built-in storage and plenty of natural light. The kitchen and shower room are modern and neatly finished, and the addition of a separate WC adds convenience. With its appealing exterior, tidy communal grounds, and the benefit of a tandem double garage. Ready to move into with no forward chain, it presents an excellent opportunity in a desirable setting.

Council Tax band: C

Tenure: Leasehold

EPC Energy Efficiency Rating: C

EPC Environmental Impact Rating:





**Laing  
Bennett**  
Independent estate & letting agents

**Laing Bennett**

Laing Bennett Ltd, The Estate Office, 8 Station Road – CT18 8HP

01303 863393

[info@laingbennett.co.uk](mailto:info@laingbennett.co.uk)

[www.laingbennett.co.uk/](http://www.laingbennett.co.uk/)

DISCLAIMER – These details are for guidance only and do not form part of an offer or contract. Measurements are approximate. Laing Bennett Ltd and the Vendor/Landlord accept no liability. Services and appliances are untested. Applicants must make their own checks. Items shown may not be included. No staff have authority to give warranties.