

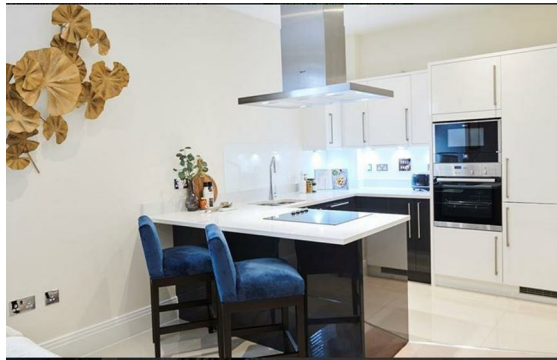


**Rainville Road, Hammersmith, London, W6**

Rent £725 Per Month

1 Bed | 1 Bath | 1 Reception

*Please call us on 020 7724 2233 or email us [info@newingtonstates.com](mailto:info@newingtonstates.com) to book a viewing.*



A stylish ground floor one-bedroom apartment with courtyard views, set within a gated, warehouse-style development on the River Thames.

Features include a spacious open-plan living area, fully fitted Metris kitchen with integrated Neff appliances, a modern bathroom with underfloor heating, and a bedroom with bespoke mirrored wardrobes.

Additional benefits include a Crestron AV system with Sonos soundbar, smart lighting control, video entry, and pre-wiring for Sky+ TV.

Ideally located at Palace Wharf, close to Hammersmith, Barons Court, Putney Bridge, and Fulham Broadway stations.

## Energy Efficiency Rating: C

Agents Note: Whilst every care has been taken to prepare these particulars, they are for guidance purposes only. All measurements are approximate and are for general guidance purposes only and whilst every care has been taken to ensure their accuracy, they should not be relied upon and potential buyers/tenants are advised to recheck the measurements.

**NEWINGTON**  
— ESTATES —

60 Upper Montagu Street

London

W1H 1SN

020 7724 2233

[info@newingtonstates.com](mailto:info@newingtonstates.com)

<http://www.newingtonstates.com>