

## Junction Mews, W2

£1,038 Per week

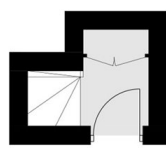
A beautiful three bedroom duplex mews apartment situated on the first and second floor. The property is spread over 1150 sq.ft and has two bathrooms, it has recently been repainted and had new wooden flooring.

Located on a beautiful Mews near Hyde Park. There are multiple options when it comes to transport with Lancaster Gate, Marble Arch, Edgware Road and Paddington Station, as well as great bus links.

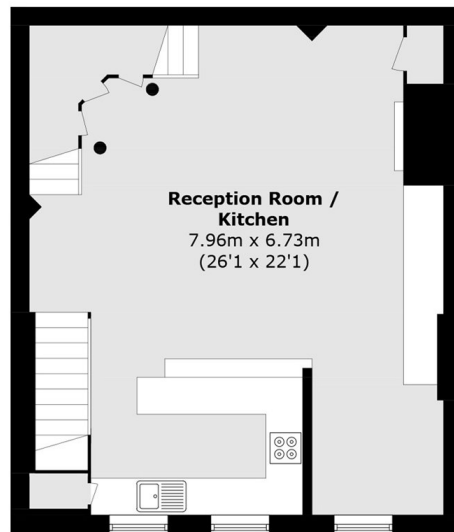
### Features

- Three Double Bedrooms
- Two Bathrooms
- Large Open-planned Living
- Wooden Floors
- Mews Property

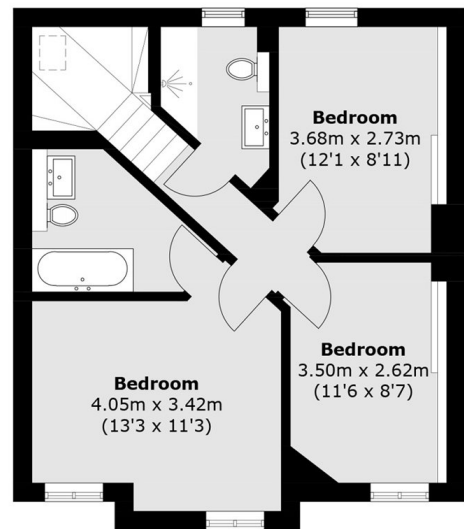
# Junction Mews, London, W2



**Ground Floor**



**First Floor**



**Second Floor**

Total area (approx.): 107.3 sq. m (1,154.9 sq. ft)