



Albert Street

Camden, NW1

£7,500 per month
(£1,730.77 per week)

An exquisite three bedroom house (excluding basement) located on one of Camden's most sought after roads nestled away from the hustle and bustle of Camden High Street and the ever so popular Stables Market.

CHESTERTONS



Albert Street

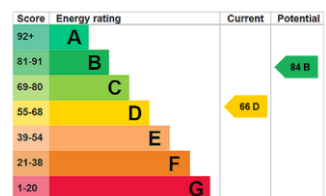
Camden, NW1

- 3 Bedroom House (excluding basement) in the heart of Camden
- Reception, Kitchen/Dining, Lounge Room & 2 Bathrooms (1 en-suite)
- Only moments from Camden High Street and local amenities
- Situated on one of Camden's most sought after roads



An exquisite 3 Bedroom house (excluding basement) located on one of Camden's most sought after roads nestled away from the hustle and bustle of Camden High Street and ever so popular Stables Market. Offering living accommodation over 4 floors, the Property has been refurbished to an extremely high standard throughout with features that include; a built-in steam oven within the Kitchen and working gas fire in the first floor Reception which too has marble flooring. Regents Park is located within close proximity with Primrose Hill also being nearby. The Property also includes a large Roof Terrace situated on the first floor at the rear of the house. Accommodation comprises of; ground floor Dining Room with modern fully fitted galley Kitchen and Lounge Room that provides

Minimum Term: 12 months
Deposit Required: £8,653.85
Local Authority: London Borough Of Camden
Council Tax Band: H
EPC Rating: D
Unfurnished



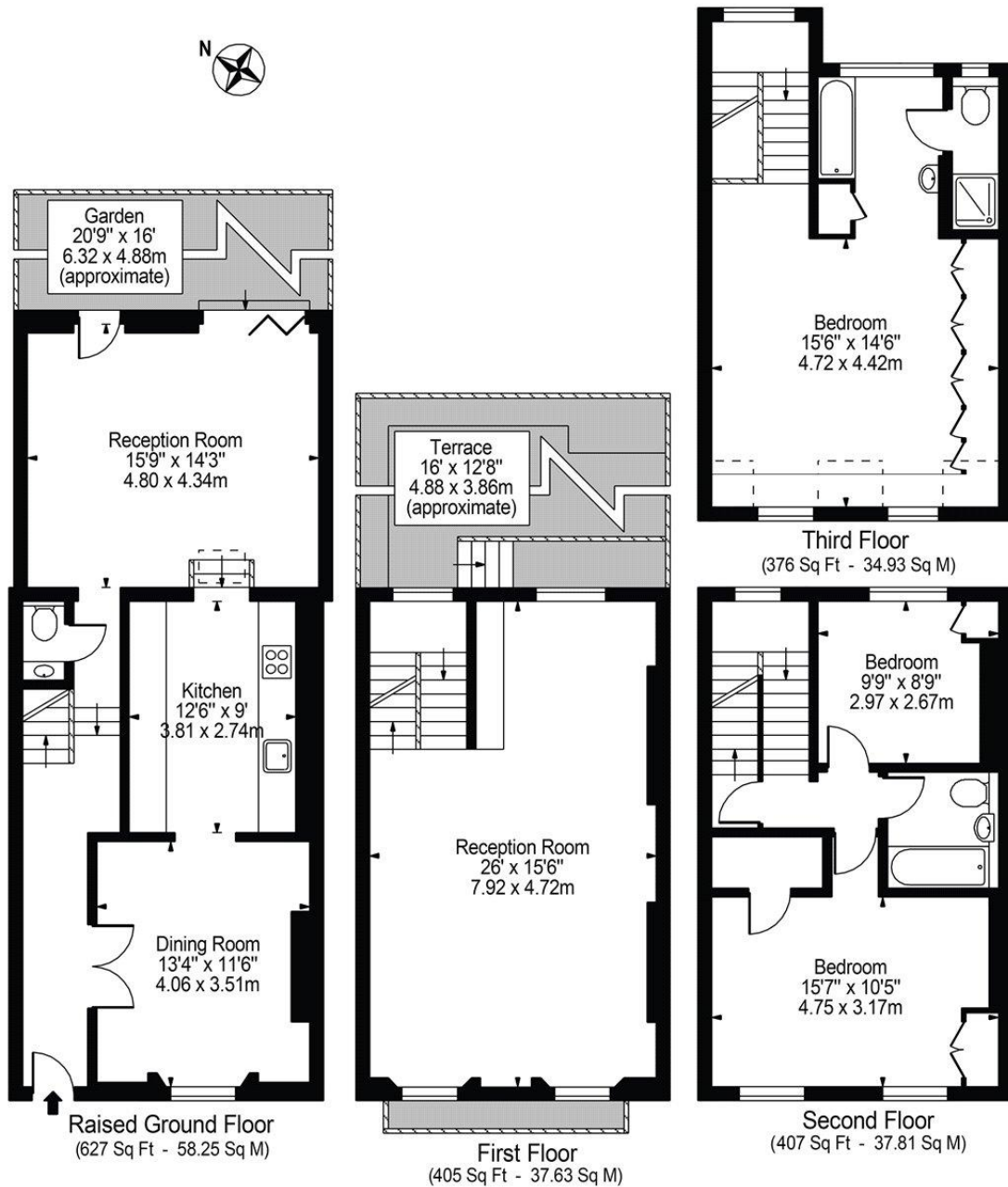
Chestertons Camden & Primrose Hill Lettings

99-101 Parkway
 London
 NW1 7PP
 camdentownlettingsusers@chestertons.co.uk
 02072673574
 chestertons.co.uk

Additional tenant charges apply (fees apply to non-AST tenancies only)
 Tenancy Agreement Fee: £300
 References per Tenant/Guarantor: £60
 Inventory check (approx. £100 – £250 inc. VAT)
 chestertons.co.uk/property-to-rent/applicable-fees

Albert Street, NW1

Approx. Gross Internal Area 1815 Sq Ft - 168.62 Sq M
(Including Restricted Height Area)



For Illustration Purposes Only - Not To Scale

This floor plan should be used as a general outline for guidance only and does not constitute in whole or in part an offer or contract. Any intending purchaser or lessee should satisfy themselves by inspection, searches, enquiries and full survey as to the correctness of each statement. Any areas, measurements or distances quoted are approximate and should not be used to value a property or be the basis of any sale or let.

