

FOR SALE



FAIRFIELD STREET
HIGHFIELDS
LEICESTER
LE5 5BF

£249,950

FEATURES

- No chain
- Well presented throughout
- Extended Mid Terraced House
- Dining Room
- Downstairs shower room + upstairs WC
- Freehold
- 3 Bedrooms
- Sitting Room
- Kitchen
- Gas central heating



SETHS

3 Bedroom Mid Terraced House for sale in Leicester

GROUND FLOOR

SITTING ROOM

11'6" x 10'6"

Carpeted, radiator, meter cupboard, double doors leading to dining room, uPVC double glazed window

DINING ROOM

11'7" x 10'7"

Carpeted, radiator, fireplace, understairs storage cupboard, uPVC double glazed window

KITCHEN

17'4" x 6'9"

Wall and base units with worktops over, sink with mixer tap and drainer, 5 ring gas hob with extractor hood, built-in oven, plumbing for dishwasher, plumbing for washing machine, space for fridge / freezer, space for breakfast table, long standing radiator, laminate flooring, partly tiled walls, uPVC double glazed window

LOBBY

SHOWER ROOM

WC, wash hand basin with mixer tap, shower cubicle, tiled flooring, tiled walls, radiator, storage cupboard, extractor fan, uPVC double glazed window

FIRST FLOOR

BEDROOM 1

12'0" x 11'6"

Carpeted, radiator, uPVC double glazed window

BEDROOM 2

11'7" x 9'1"

Carpeted, radiator, storage cupboard, uPVC double glazed window

BEDROOM 3

7'1" x 6'11"

Carpeted, radiator, uPVC double glazed window

WC

WC, wash hand basin with mixer tap, uPVC double glazed window

OUTSIDE

Small slabbed yard to the rear with brick walls surround

ADDITIONAL INFO

Tenure: Freehold

EPC rating: tbc

Council Tax Band: A

Council Tax Rate: £1605

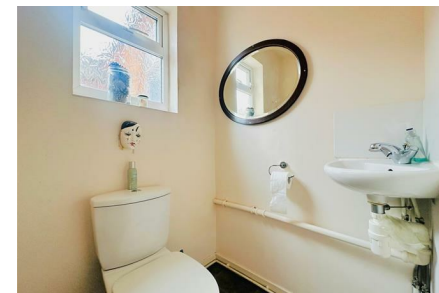
Mains Gas: Yes

Mains Electricity: Yes

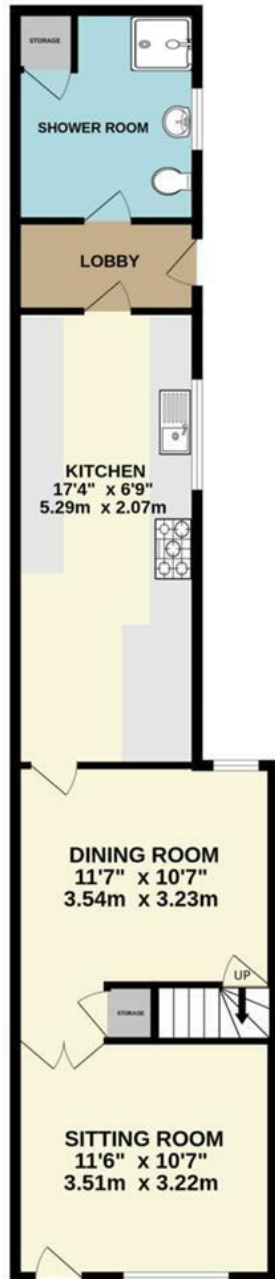
Mains Water: Yes

Mains Drainage: Yes

Broadband availability: Full Fibre Broadband



UPPINGHAM ROAD OFFICE SALES | 265 UPPINGHAM ROAD, LEICESTER, LE5 4DG



Call us on

0116 266 9977

info@seths.co.uk

www.seths.co.uk

Council Tax Band

A



Agents Note: Whilst every care has been taken to prepare these particulars, they are for guidance purposes only. All measurements are approximate and are for general guidance purposes only and whilst every care has been taken to ensure their accuracy, they should not be relied upon and potential buyers are advised to recheck the measurements.

