



6 Addington Close, Windsor, SL4 4BP  
£695,000

 **HORLER**

## 6 Addington Close, Windsor, SL4 4BP

A four-bedroom home in Addington Close, Windsor, offering excellent potential for renovation and modernisation. The property features two reception rooms, a conservatory, and a large private rear garden, along with driveway parking for multiple vehicles.

Ideally located near local amenities, schools, and transport links, it presents a fantastic opportunity to create a bespoke family home in a sought-after area.



### **Property Summary:**

Nestled in the charming Addington Close, Windsor, this delightful house presents a wonderful opportunity for those looking to create their dream home. Boasting four spacious bedrooms and two inviting reception rooms, this property is perfect for families or those who enjoy entertaining. The addition of a conservatory offers a lovely space to relax and enjoy the views of the expansive private rear garden, which is adorned with mature shrubs, providing both beauty and privacy.

While the house is in need of renovation and modernising, it offers a blank canvas for buyers to infuse their personal style and preferences. The potential to transform this property into a contemporary haven is immense, making it an exciting prospect for those with a vision.

The large driveway accommodates parking for three to four cars, ensuring convenience for residents and guests alike. Furthermore, the location is ideal, situated close to local amenities, reputable schools, and excellent transport links, making daily life both easy and enjoyable.

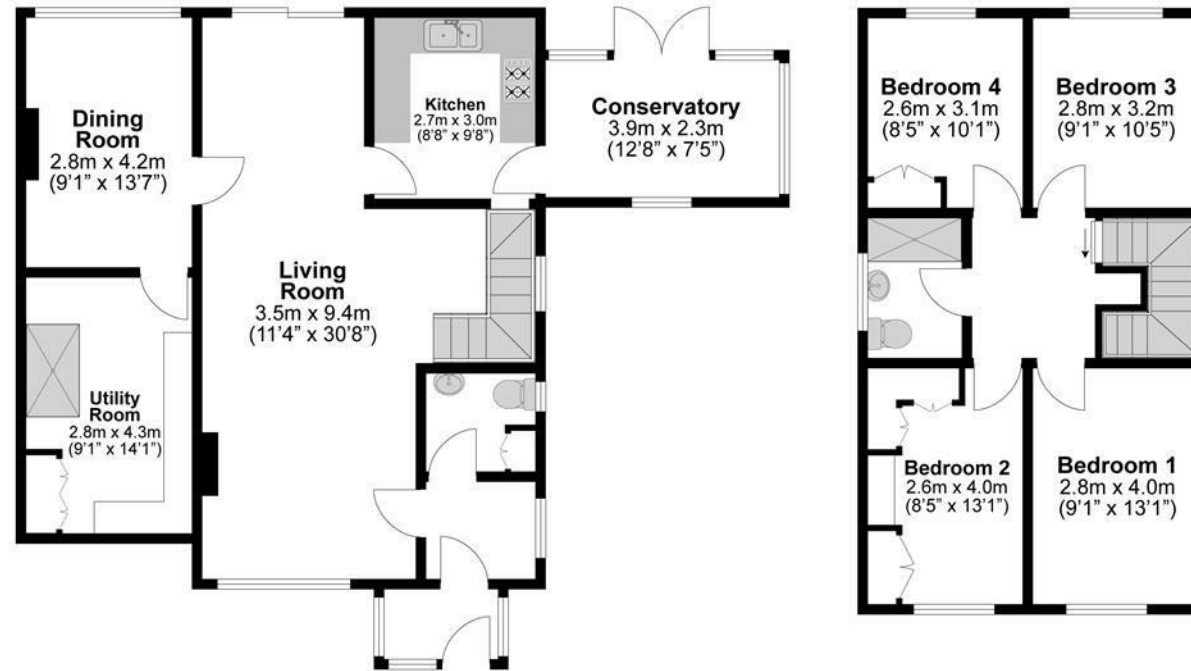
This property is not just a house; it is a place where memories can be made and cherished. With a little imagination and effort, it can be transformed into a stunning family home in one of Windsor's most sought-after areas. Don't miss the chance to explore the potential that this property holds.

### **Legal note:**

**\*\*Although these particulars are thought to be materially correct, their accuracy cannot be guaranteed and they do not form part of any contract.\*\***







**Illustrations are for identification purposes only,  
measurements are approximate, not to scale.**