



OAKFIELD



Welton Rise, St. Leonards, TN37 7RS

£1,150 Per Calendar Month



Welton Rise, St. Leonards, TN37 7RS

Well-Presented Two Bedroom Ground Floor Flat In Popular Little Ridge Location

Situated in the highly sought-after area of Little Ridge, this attractive two-bedroom ground floor flat offers spacious and practical accommodation with excellent access to Conquest Hospital, The Ridge, local amenities, and convenient transport links.

Internally, the property features two well-proportioned double bedrooms, one bedroom benefiting from fitted wardrobes for added storage. The modern bathroom is finished to a good standard and includes a full-sized bath with shower over and a heated towel rail.

The property also boasts a fitted kitchen complete with an integrated oven and gas hob, with a generous living and dining area.

Additional benefits include excellent built-in storage throughout, gas central heating, double glazing, a secure entry phone system, and allocated parking located to the rear of the building.

Please note:
An annual household income of £34,500 will be required for the affordability criteria of this property.
Available now.





Living Room

16'6" x 14'7" (5.05m x 4.45m)

Kitchen

8'7" x 7'8" (2.62m x 2.36m)

Bedroom One

12'2" x 11'5" (3.71m x 3.48m)

Bedroom Two

10'0" x 10'0" (3.07m x 3.05m)

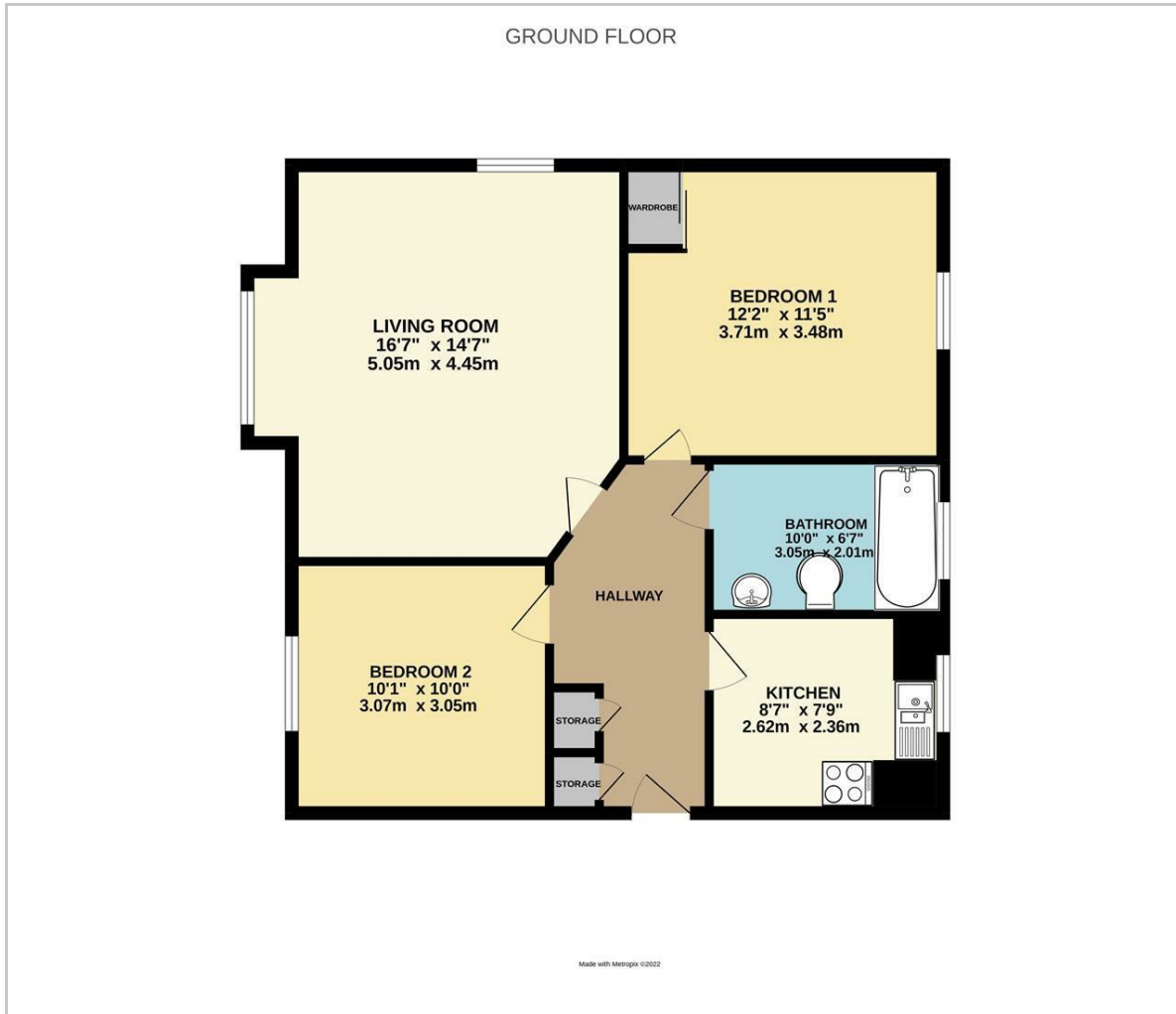
Bathroom

10'0" x 6'7" (3.05m x 2.01m)

Council Tax Band B - £2,081.78 per annum



Floor Plan

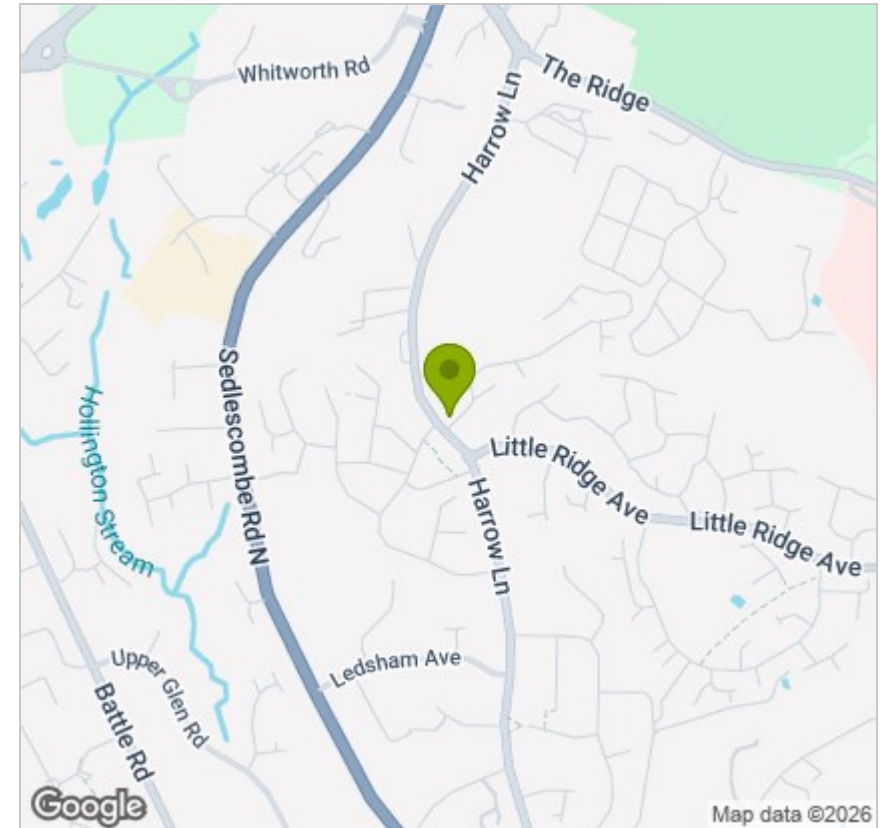


Viewing

Please contact us on 01424 446644 if you wish to arrange a viewing appointment for this property or require further information.

These particulars, whilst believed to be accurate are set out as a general outline only for guidance and do not constitute any part of an offer or contract. Intending purchasers should not rely on them as statements of representation of fact, but must satisfy themselves by inspection or otherwise as to their accuracy. No person in this firm's employment has the authority to make or give any representation or warranty in respect of the property.

Area Map



Energy Efficiency Graph

