



Millers Drive, Dickleburgh Diss IP21 4PX

welcome to

Millers Drive, Dickleburgh Diss

A 2-bedroom semi-detached home in the popular village of Dickleburgh, featuring a contemporary kitchen flowing into a bright extended dining area, spacious lounge, and a modern family bathroom. Outside offers a private rear garden with lawn and patio, plus allocated off-road parking.

Entrance Hall

Front door, radiator, fuse box, laminate flooring.

Cloakroom

Slide door access, tiled flooring.

Lounge

14' 4" x 12' 11" Max (4.37m x 3.94m Max)

Window to front aspect, French door into kitchen, hard flooring.

Dining Room

9' x 12' (2.74m x 3.66m)

Window to rear aspect, Velux window, radiator, patio door to rear, tiled flooring.

Kitchen

9' 1" x 12' 11" (2.77m x 3.94m)

Wall and base units, built in sink, integrated oven, space for large double fridge, free flowing to dining room.

Landing

Window to side aspect, loft hatch, carpet flooring.

Bedroom 1

12' 11" x 12' 7" (3.94m x 3.84m)

Two windows to front aspect, radiator, storage cupboard, carpet flooring.

Bedroom 2

11' 2" x 7' 11" (3.40m x 2.41m)

Window to rear aspect, radiator, carpet flooring.

Bathroom

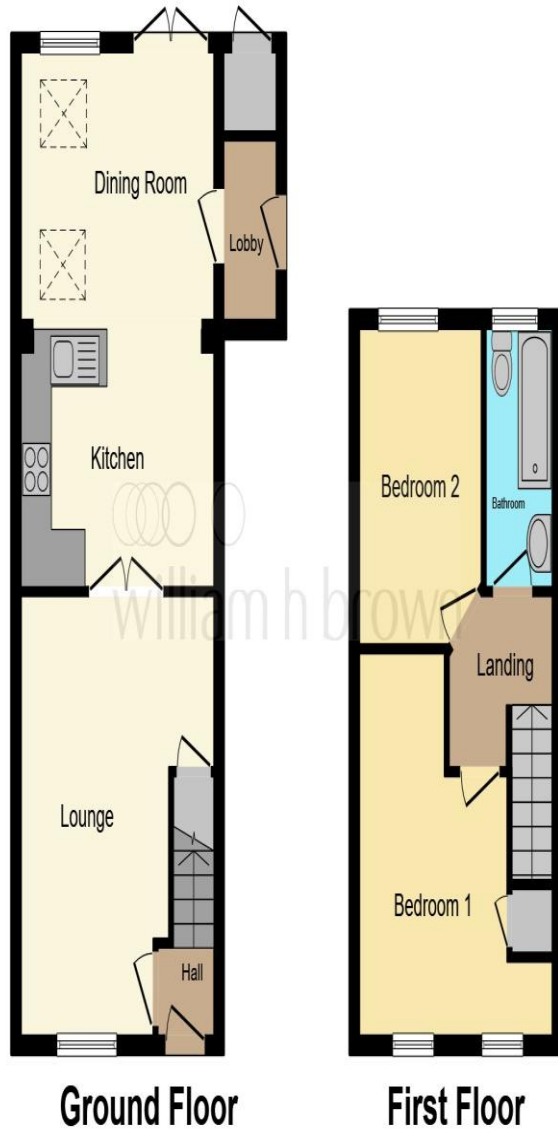
Window to rear aspect, W/C, bath tub, overhead shower, wash basin, heated towel rail, hard flooring.

Rear Garden

Small patio area, turfed, fenced for boundary, side gate access.

Parking

Allocated off road parking



This floor plan is for illustrative purposes only. It is not drawn to scale. Any measurements, floor areas (including any total floor area), openings and orientation are approximate. No details are guaranteed, they cannot be relied upon for any purpose and they do not form part of any agreement. No liability is taken for any error, omission or misstatement. A party must rely upon its own inspection(s). Powered by www.focalagent.com

welcome to
Millers Drive,
Dickleburgh Diss

- 2-bedroom semi-detached house
- Allocated off-road parking
- Well-maintained enclosed Rear Garden
- Sought-after village location
- Downstairs cloakroom and Family Bathroom

Tenure: Freehold EPC Rating: D
Council Tax Band: B

guide price

£200,000



view this property online williamhbrown.co.uk/Property/DSS111224



Property Ref:
DSS111224 - 0014

1. MONEY LAUNDERING REGULATIONS Intending purchasers will be asked to produce identification documentation at a later stage and we would ask for your co-operation in order that there is no delay in agreeing the sale. 2. These particulars do not constitute part or all of an offer or contract. 3. The measurements indicated are supplied for guidance only and as such must be considered incorrect. Potential buyers are advised to recheck measurements before committing to any expense. 4. We have not tested any apparatus, equipment, fixtures or services and it is in the buyers interest to check the working condition of any appliances. 5. Where an EPC, or a Home Report (Scotland only) is held for this property, it is available for inspection at the branch by appointment. If you require a printed version of a Home Report, you will need to pay a reasonable production charge reflecting printing and other costs. 6. We are not able to offer an opinion either written or verbal on the content of these reports and this must be obtained from your legal representative. 7. Whilst we take care in preparing these reports, a buyer should ensure that his/her legal representative confirms as soon as possible all matters relating to title including the extent and boundaries of the property and other important matters before exchange of contracts.

William H Brown is a trading name of Sequence (UK) Limited which is registered in England and Wales under company number 4268443, Registered Office is Cumbria House, 16-20 Hockliffe Street, Leighton Buzzard, Bedfordshire, LU7 1GN. VAT Registration Number is 500 2481 05.

william h brown



01379 644719



Diss@williamhbrown.co.uk



1 Navire House Mere Street, DISS, Norfolk,
IP22 4AG



williamhbrown.co.uk