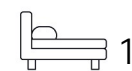


Living  
made  
better

Venice Corte  
Lewisham, SE13 7FW



Offers In Excess Of £280,000

# Venice Corte, Lewisham, SE13 7FW

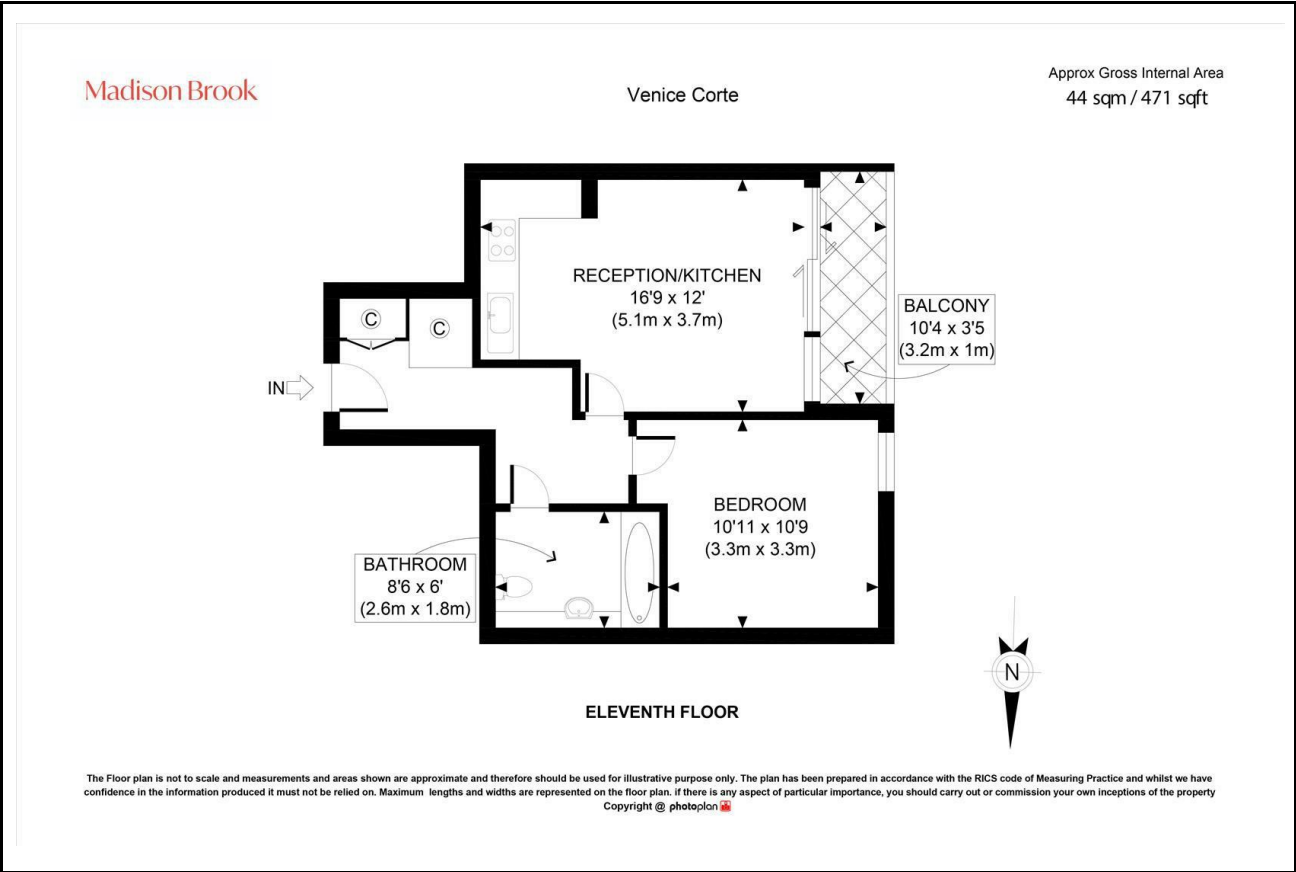
Madison Brook

## Property Summary

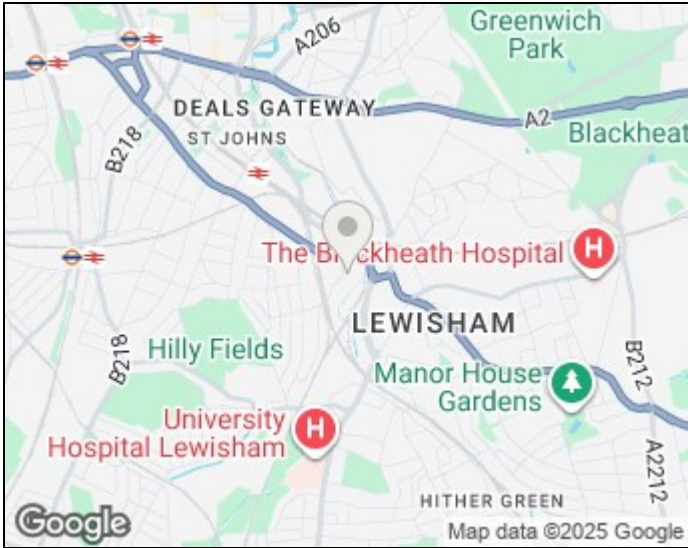
Located on the 11th floor of Venice Corte, this chain-free one-bedroom apartment offers modern living just moments from Lewisham DLR and train station. Spanning 471 sqft, the property features a bright open-plan kitchen/living space with laminate flooring, integrated appliances, and direct access to a private balcony. The double bedroom is spacious and carpeted, while the modern three-piece bathroom includes a full-size bathtub.

Further benefits include 24-hour concierge, communal terrace, and close proximity to local shops, cafés, and Lewisham Shopping Centre (0.3 miles).

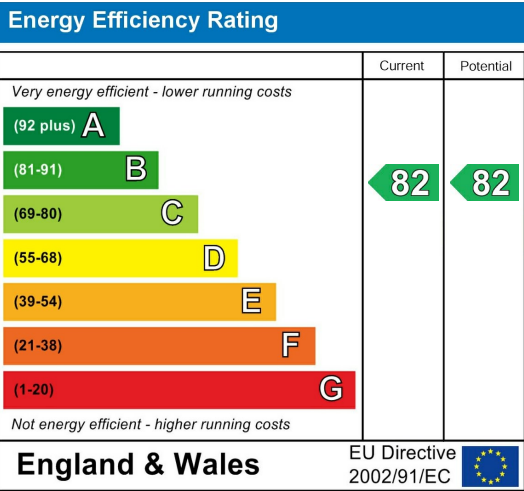
## Floorplan



## Area Map



## Energy Efficiency Graph



These particulars, whilst believed to be accurate are set out as a general outline only for guidance and do not constitute any part of an offer or contract. Intending purchasers should not rely on them as statements of representation of fact, but must satisfy themselves by inspection or otherwise as to their accuracy. No person in this firms employment has the authority to make or give any representation or warranty in respect of the property.

43 Loampit Vale, Lewisham, London, SE13 7FT  
Tel: 020 3946 6200 Email:  
lewisham@madisonbrook.com  
<https://madisonbrook.com/>