



**People Make Places**



**Odhams Walk, Covent Garden WC2**

1 bedroom | 560 sq ft

£625 pw





Positioned in a private courtyard accessible from Long Acre & Shelton Street, this one-bedroom apartment is well-proportioned & features its own entrance. The ample living space is well laid out, includes a separate kitchen, a large bedroom and a shower room. Available furnished from late July.

#### What you need to know

- One bedroom
- First floor
- Wood floors throughout
- Separate kitchen
- Well-proportioned rooms
- Available late July
- Furnished
- Overlooking Neal Street
- Moments from Seven Dials & The Piazza
- Covent Garden tube nearby



**Odhams Walk, Covent Garden WC2**



### Overview

Set in a gated development moments from the Piazza, this one bedroom apartment has a simple modern architecture design with well-proportioned rooms. Odhams Walk was built in 1979 using a design of geometry and is considered an oasis of calm in London's West End, which is gated after dark. The apartment has a bright living room with a separate kitchen with smart white units positioned off it. There is a stylish modern bathroom and plentiful storage in the bedroom and hallway.

Odhams Walk lies between Long Acre and Shelton Street with Covent Garden and Seven Dials on its doorstep. Transport links can be reached via nearby Covent Garden (Piccadilly Line), Holborn (Central and Piccadilly Lines) and Tottenham Court Road (Central, Northern and Elizabeth Lines) Underground Stations. Soho, Mayfair, the Southbank, Holborn and Fitzrovia are all easily accessible by foot.

The apartment is available late July on a furnished basis.  
Westminster Council tax band: E.



# People Make Places

London is a collection of inspiring urban villages and one of the most exciting places in the world to live, work & play.

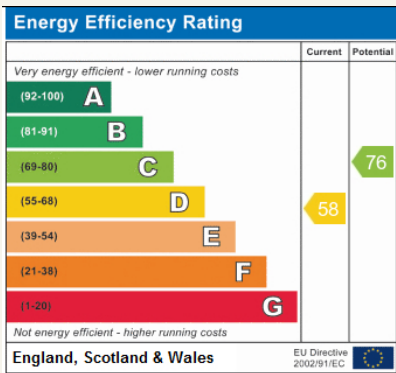
We work with both property owners and their occupiers, sharing the story of these vibrant neighbourhoods, conveying the unique soul & energy to future custodians, the people who'll keep them buzzing.

And unlike many real estate businesses we're not just about buildings, because streets & buildings don't make a neighbourhood.

We're about building relationships, because **people make places**.

MISINTERPRETATION ACT (COPYRIGHT) DISCLAIMER: Tavistock Bow Ltd for themselves and for the vendor(s) of this property whose agents they are, given notice that: 1. These particulars do not constitute, not constitute any part of, an offer or contract. 2. None of the statements contained in these particulars as to the property are to be relied on as statements or representations of fact. 3. Any intending purchaser or lessee must satisfy themselves by inspection or otherwise as to the correctness of each of the statements contained in these particulars. 4. The vendor(s) or lessor(s) do not make or give and neither Tavistock Bow Ltd nor any person in their employment has any authority to make or give any representation or warranty whatever in relation to this property. Finance Act 1989, Unless otherwise stated all prices and rents are quote exclusive of VAT. Property Misrepresentation Act 1991; These details are believed to be correct at the time of compilation but may be subject to subsequent amendment.

Follow us:     @tavistockbow

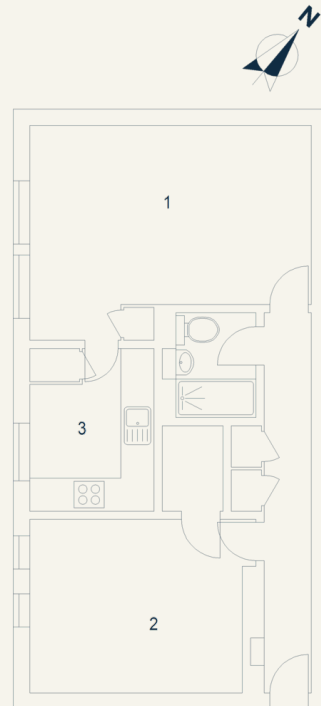


Odhams Walk, WC2

Approximate Gross Internal Area 52 sq m / 560 sq ft

First Floor

- 1 Reception Room  
4.98 x 3.92M  
16'4" x 12'10"
- 2 Bedroom  
3.84 x 3.16M  
12'7" x 10'4"
- 3 Kitchen  
2.94 x 2.26M  
9'8" x 7'5"



Floor Plan produced for Tavistock Bow by Mays Floorplans © . Tel 020 3397 4594  
Illustration for identification purposes only, not to scale.

**tavistockbow**

21 New Row, Covent Garden,  
London, WC2N 4LE

t: 020 7477 2177  
e: hello@tavistockbow.com  
w: tavistockbow.com



**Odhams Walk, Covent Garden WC2**