



Rant Meadow, Hemel Hempstead, HP3 8EQ

Offers In Excess Of £485,000

Situated in this sought after location in Rant Meadow, Bennetts End is the immaculate end of terrace family home. Boasting three bedrooms, 19'5 modern fitted kitchen/diner with integrated appliances, 16'6 lounge, downstairs cloakroom, contemporary shower room, double glazing, gas central heating and a bar/summerhouse which can also be used as a home office, gym or family room.

Located within easy reach of local shops, Hemel Hempstead town centre, Jarman Park with its supermarkets, cinema, restaurants and the XC Centre and the M1, M25 and A41 road links.

Situated in Rant Meadow, Bennetts End, this immaculate three-bedroom end of terrace home offers a perfect blend of comfort and modern living. Spanning an impressive 1,076 square feet, the property boasts a spacious 19'5 modern fitted kitchen/diner with integrated appliances, ideal for family meals and entertaining guests. The generous 16'6 lounge provides a welcoming space to relax and unwind.

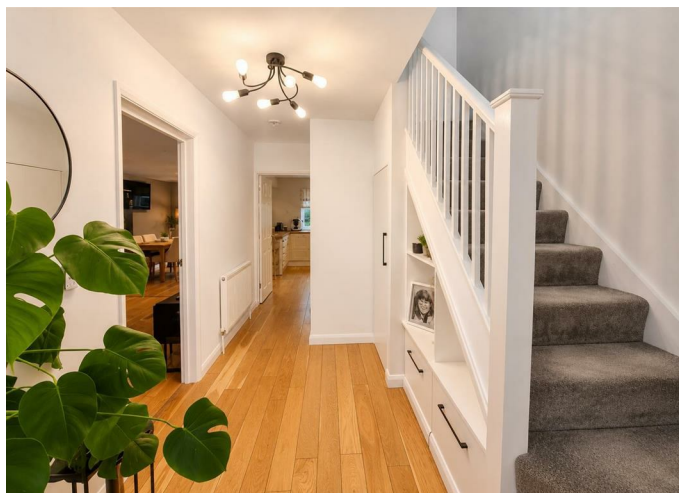
This delightful home features a convenient downstairs cloakroom, enhancing the practicality of everyday living. With gas central heating and double glazing throughout, you can enjoy a warm and cosy atmosphere during the colder months.

Additionally, the property includes a bar/summerhouse, providing an excellent opportunity for leisure and social gatherings in your own garden and flexibility to use as a home office, gym or family room.

This residence is not just a house; it is a place where memories can be made. With its well-thought-out layout and modern amenities, it is perfect for families or anyone seeking a comfortable and stylish home in a desirable location. Do not miss the chance to make this lovely property your own.

Porch

Entrance Hall



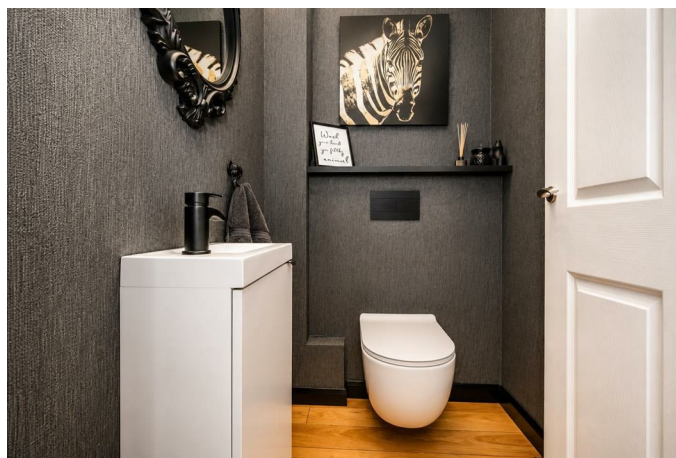
Lounge 16'6 x 10'5 (5.03m x 3.18m)



Modern Fitted Kitchen/Diner 19'5 x 13'2 (5.92m x 4.01m)



Downstairs Cloakroom

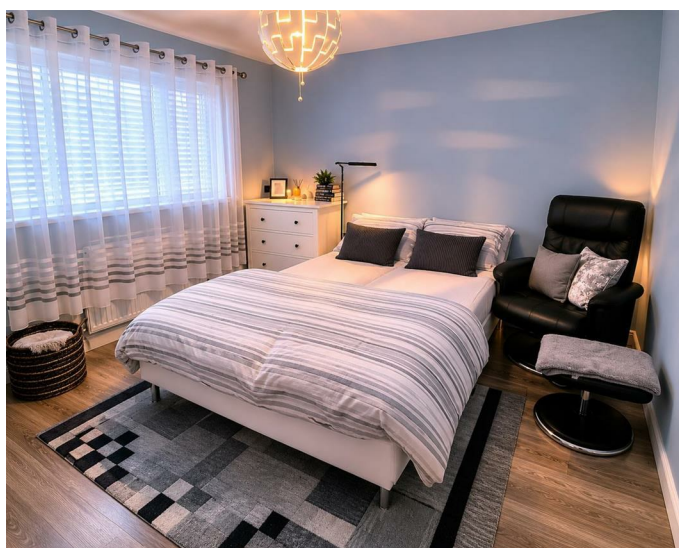


Landing

Bedroom One 12'1 x 11'7 (3.68m x 3.53m)



Bedroom Two 11'7 x 10'6 (3.53m x 3.20m)



Bedroom Three 6'7 x 5'8 (2.01m x 1.73m)



Shower Room



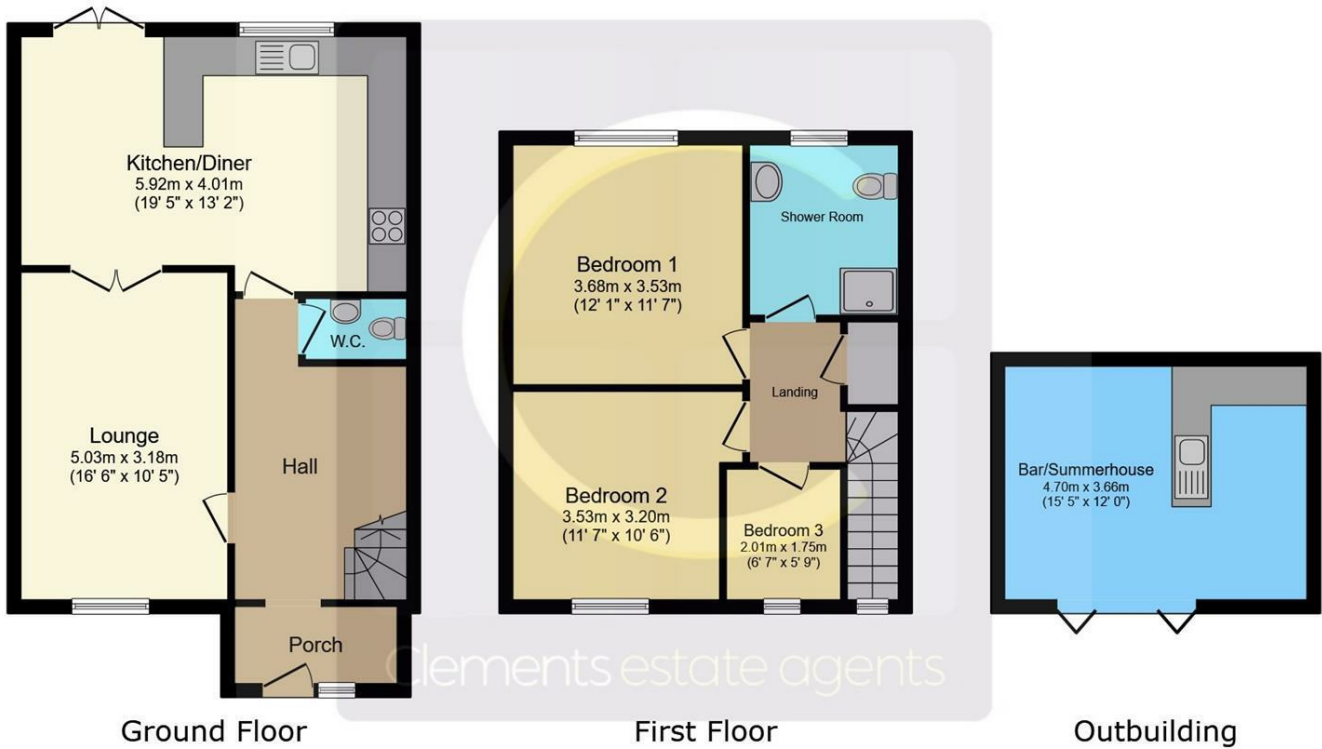
Rear Garden



Bar/Summerhouse 15'5 x 12'0 (4.70m x 3.66m)

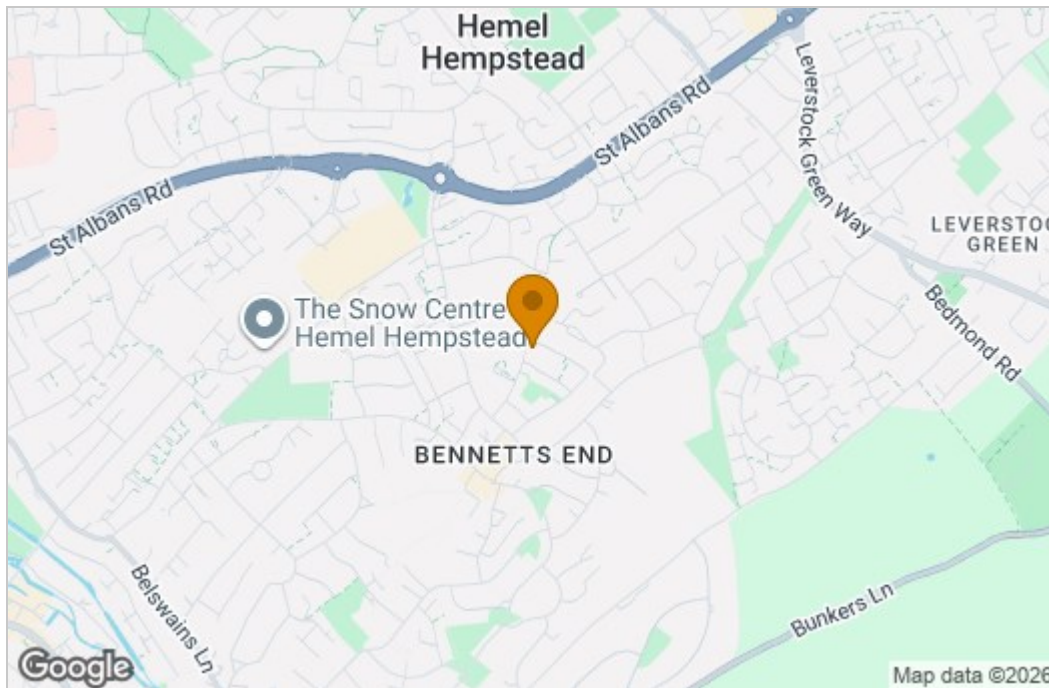


Floor Plan

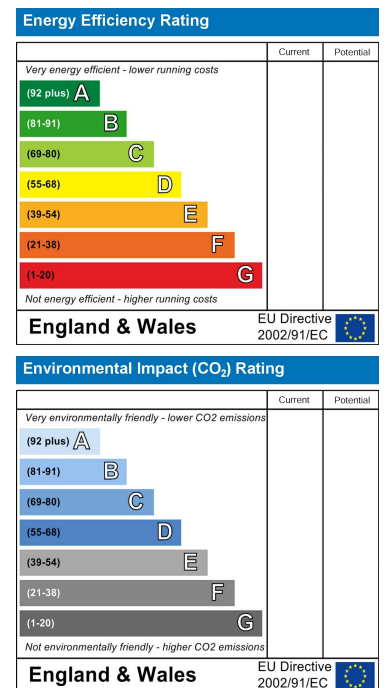


This floor plan is for illustrative purposes only. It is not drawn to scale. Any measurements, floor areas (including any total floor area), openings and orientations are approximate. No details are guaranteed, they cannot be relied upon for any purpose and do not form any part of any agreement. No liability is taken for any error, omission or misstatement. A party must rely upon its own inspection(s). Powered by www.Propertybox.io

Area Map



Energy Efficiency Graph



These particulars, whilst believed to be accurate are set out as a general outline only for guidance and do not constitute any part of an offer or contract. Intending purchasers should not rely on them as statements of representation of fact, but must satisfy themselves by inspection or otherwise as to their accuracy. No person in this firm's employment has the authority to make or give any representation or warranty in respect of the property.