

OVER 60?

Secure this property
for up to **59% less!**



Guide Price
£575,000
Freehold

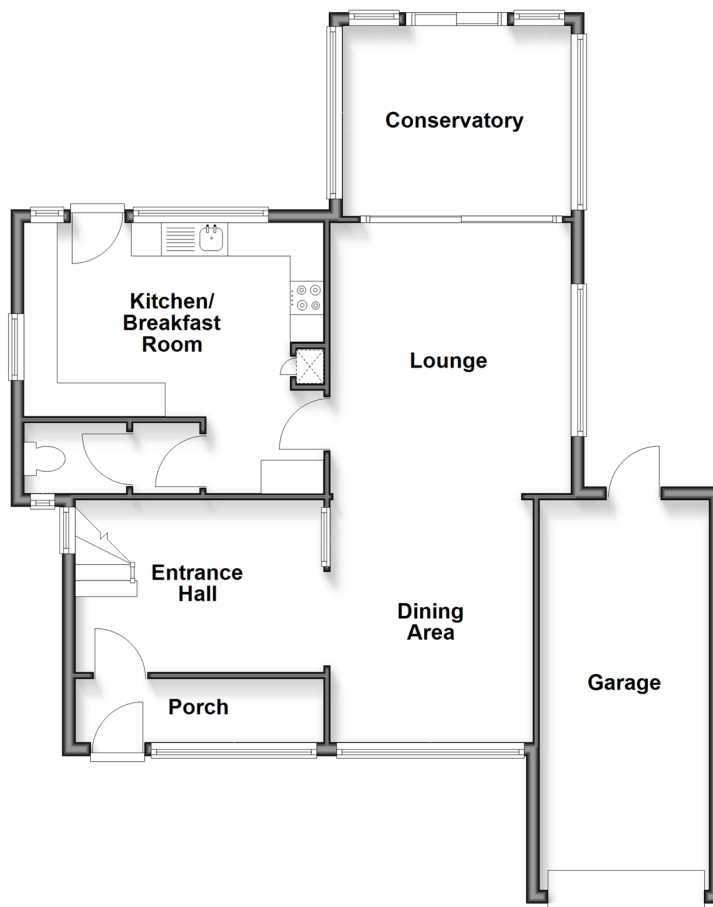
4x  1x  2x 

Bredhurst Road, Wigmore, Gillingham,
Kent, ME8

Wards
Helping you move forwards

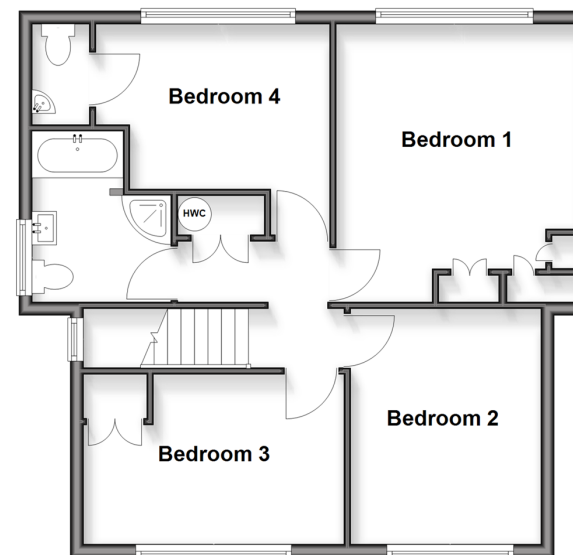
Ground Floor

Approx. 84.5 sq. metres (909.7 sq. feet)



First Floor

Approx. 59.2 sq. metres (637.6 sq. feet)



Accommodation

GROUND FLOOR

Porch
Entrance Hall
Dining Area : 12'3 x 9'7 (3.74m x 2.92m)
Lounge : 13'7 x 12'3 (4.14m x 3.74m)
Conservatory : 11'0 x 9'7 (3.36m x 2.92m)
Kitchen/Breakfast Room : 16'0 x 13'8 (4.88m x 4.17m)
Separate Toilet

FIRST FLOOR

Landing
Bedroom 1 : 13'5 x 12'0 (4.09m x 3.66m)
Bedroom 2 : 12'9 x 8'0 (3.89m x 2.44m)
Bedroom 3 : 12'1 x 9'7 (3.69m x 2.92m)
Bedroom 4 : 12'8 x 9'1 (3.86m x 2.77m)
En-Suite Cloakroom
Bathroom : 8'6 x 8'4 (2.59m x 2.54m)

OUTSIDE

Front Garden
Rear Garden
Summerhouse : 9'1 x 7'4 (2.77m x 2.24m)
Garage : 18'7 x 8'2 (5.67m x 2.49m)
Driveway



Main features

- A deceptively spacious property that would make a fantastic family home
- Generous open plan lounge and dining area
- Useful downstairs toilet
- Conservatory with views of the wonderful garden
- En-Suite cloakroom to bedroom 4
- Impressive and established rear garden
- Highly sought after Wigmore location
- Close to shops and schools



Nearest Schools

Primary Schools: Fairview Community Primary, Deanwood Primary Education Technology School, Park Wood Junior School
Secondary Schools: Rainham School for Girls, The Howard School, Leigh Academy Rainham



Transport Information

Train Stations: Rainham 1.7 miles, Gillingham 3.0 miles, Chatham 3.5 miles



Address

Bredhurst Road, Wigmore, Gillingham, Kent, ME8



Directions

For directions to this property please contact us.



Call Rainham Branch 01634 373531 ■ wardsofkent.co.uk



- Legal advice should be taken to verify fixtures/fittings, planning, alterations and/or lease details
- Appliances & services are untested, dimensions are approximate and floor plans are not to scale
- Through a Homewise Home For Life Plan people aged 60+ can secure this property for up to 50% less, by purchasing a Lifetime Lease.



11339079/20251028/CW/DW