



Meadow Bank Canterbury Road, Elham - CT4 6UE

Guide Price **£1,400,000**

Approximate Gross Internal Area (Excluding Garage & Outbuildings) = 252 sq m / 2713 sq ft

Garage = 56 sq m / 602 sq ft

Stables = 75 sq m / 807 sq ft

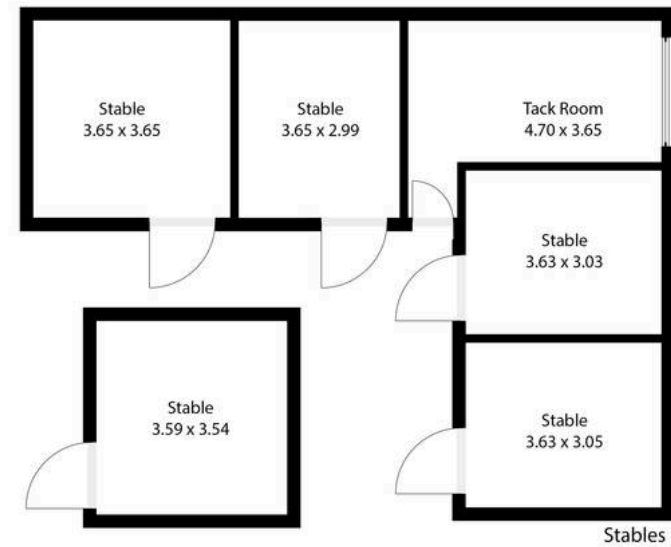
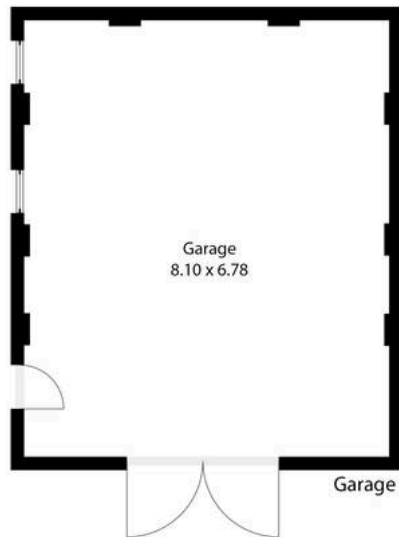
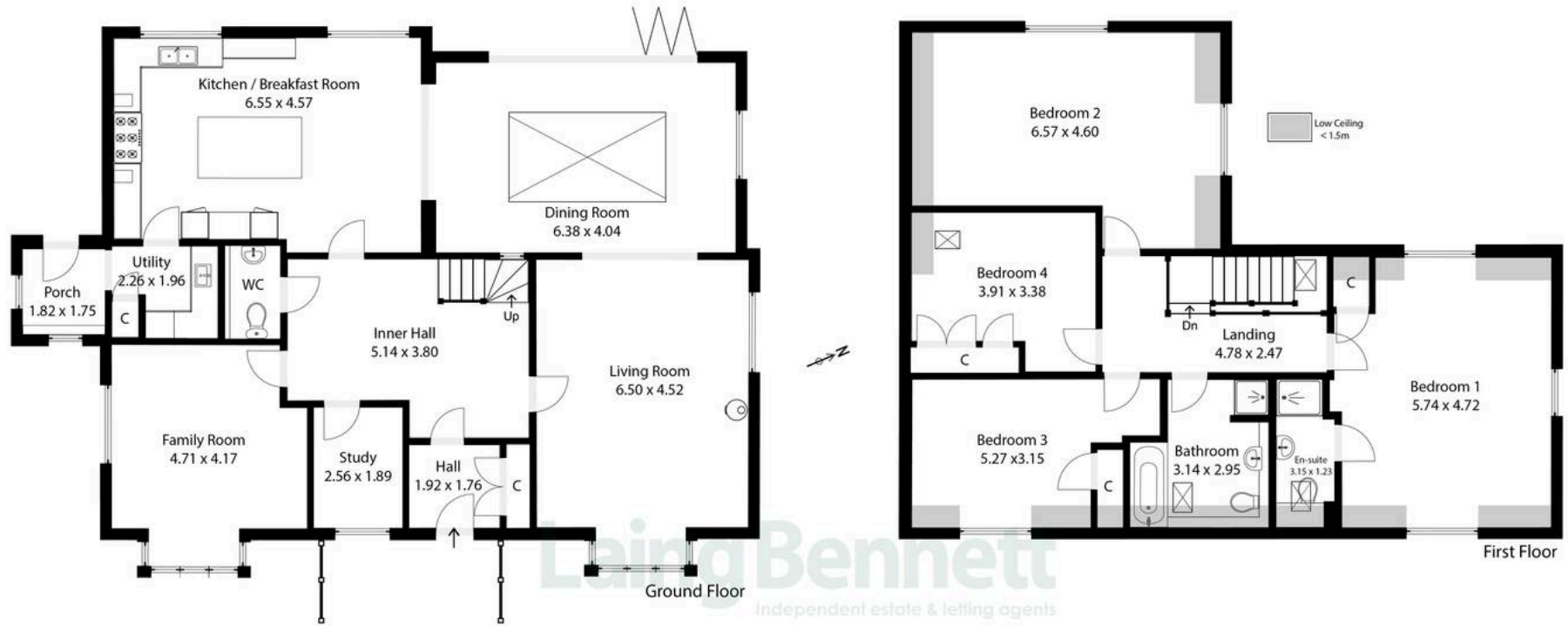


Illustration for identification purposes only. Measurements are approximate. Dimensions given are between the widest points.
Not to scale. Outbuildings are not shown in actual location.
© Unauthorised reproduction prohibited - chriskemps@hotmail.com



Meadow Bank Canterbury Road

Elham, Canterbury

This exceptional four-bedroom detached residence offers a rare opportunity to enjoy luxurious living in an edge of village setting. Designed with modern family life in mind, the home provides generous, light filled accommodation, finished to a high standard throughout. A stunning dining room with a feature roof light and bi-fold doors forms the heart of the home, perfectly connecting indoor and outdoor living, while the well-appointed kitchen includes integrated appliances and ample storage. Upstairs, four well-proportioned bedrooms provide comfort and privacy, including a superb principal suite with far-reaching countryside views. Outside, a long sweeping driveway leads to a detached garage, with beautifully maintained gardens to the front and rear. Beyond, a fenced paddock with stabling and a tack room makes this an ideal property for equestrian enthusiasts.

Council Tax band: G

Tenure: Freehold

EPC Energy Efficiency Rating: B

EPC Environmental Impact Rating: B











Laing Bennett

Laing Bennett Ltd, The Estate Office, 8 Station Road – CT18 8HP

01303 863393 • info@laingbennett.co.uk • www.laingbennett.co.uk/

DISCLAIMER – These details are for guidance only and do not form part of an offer or contract. Measurements are approximate. Laing Bennett Ltd and the Vendor/Landlord accept no liability. Services and appliances are untested. Applicants must make their own checks. Items shown may not be included. No staff have authority to give warranties.