



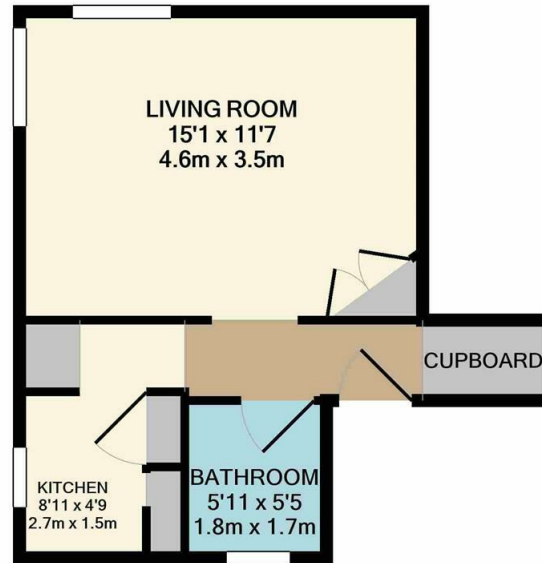
Bushey Croft, Harlow, CM18 6RJ
£900 Per Month

1 1 0 C

A set of four white icons on a dark background. From left to right: a bed icon with the number '1', a bathtub icon with the number '1', a sofa icon with the number '0', and a lightbulb icon with the letter 'C'.

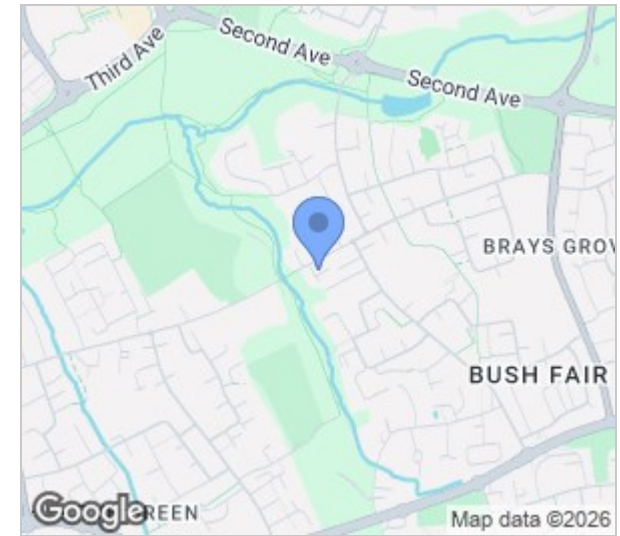
Bushey Croft, Harlow, CM18 6RJ

A first floor studio flat that comprises an entrance hall leading to a living room/bedroom, kitchen with a range of units, bathroom with a three piece-suite and a large storage cupboard off of the hallway. Bushey Croft is located between Harlow town centre and Bush Fair and is available NOW on an unfurnished basis.



REYLANDJOHNSON/BC
TOTAL APPROX. FLOOR AREA 303 SQ.FT. (28.2 SQ.M.)

Whilst every attempt has been made to ensure the accuracy of the floor plan contained here, measurements of doors, windows, rooms and any other items are approximate and no responsibility is taken for any error, omission, or mis-statement. This plan is for illustrative purposes only and should be used as such by any prospective purchaser. The services, systems and appliances shown have not been tested and no guarantee as to their operability or efficiency can be given
Made with Metropix ©2021



Energy Efficiency Rating			Environmental Impact (CO ₂) Rating		
	Current	Potential		Current	Potential
Very energy efficient - lower running costs			Very environmentally friendly - lower CO ₂ emissions		
(92 plus) A			(81-91) A		
(81-91) B			(69-80) B		85
(69-80) C			(55-68) C	78	
(55-68) D			(39-54) D		
(39-54) E			(21-38) E		
(21-38) F			(1-20) F		
(1-20) G			Not environmentally friendly - higher CO ₂ emissions		
Not energy efficient - higher running costs			England & Wales	EU Directive 2002/91/EC	EU Directive 2002/91/EC
	73	78			

These particulars, whilst believed to be accurate are set out as a general outline only for guidance and do not constitute any part of an offer or contract. Intending purchasers should not rely on them as statements of representation of fact, but must satisfy themselves by inspection or otherwise as to their accuracy. No person in this firm's employment has the authority to make or give any representation or warranty in respect of the property.

T. 01279 216216 E. info@rjestateagents.co.uk

1 Acorn Mews, Harlow, Essex, CM18 6NA www.rjestateagents.co.uk