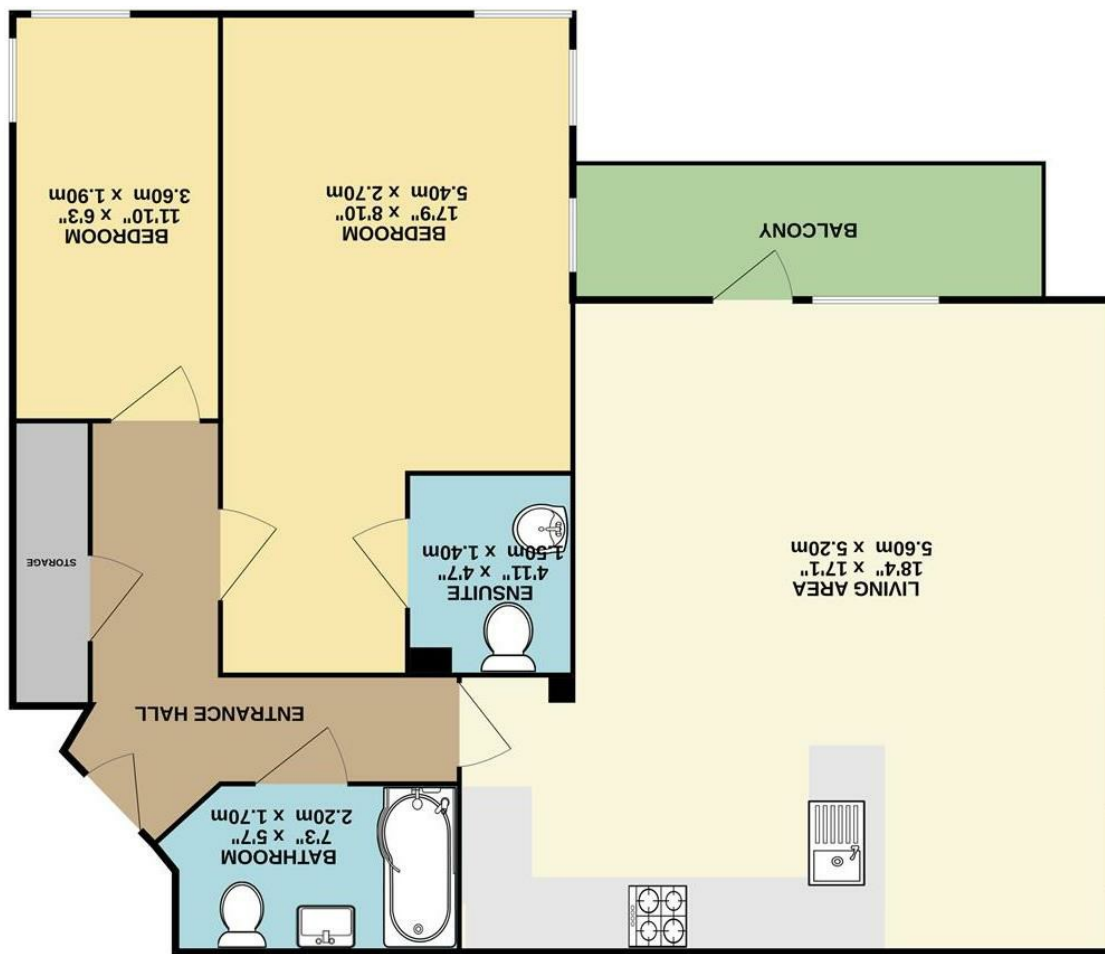


These particulars are believed to be accurate but they are not guaranteed and do not form a contract. Neither Jordan Fishwick nor the vendor or lessor accept any responsibility in respect of these particulars, which are not intended to be statements or representations of fact and any intending purchaser or lessee must satisfy himself by inspection or otherwise as to the correctness of each of the statements contained in these particulars. Any floorplans on this brochure are for illustrative purposes only and are not necessarily to scale.

While every attempt has been made to ensure the accuracy of the floorplan contained here, measurements of doors, windows, floors and any other items are approximate and no responsibility is taken for any error or omission or mis-statement. This plan is for guidance purposes only and should be used as such by any prospective purchaser. The services, systems and appliances shown have not been tested and no guarantee as to their operation or efficiency can be given. Made with floorplan 02025



1ST FLOOR



Barrington Road Altrincham
WA14 1HP

£262,995



The Property

Jordan Fishwick are proud to market for sale this immaculately presented two bedroom first floor apartment located within a very short walk of Altrincham town centre. Offering access to local amenities, highly regarded schools and great transport links to Manchester city centre.

In brief the property consists of an entrance hall, open plan living area with kitchen boasting integrated appliances and there is also access to a southerly facing private balcony. There are two bedrooms, with the main bedroom benefitting from a private W.C. The main bathroom is newly fitted and there is also storage located within the main entrance hall.

The property also offers lift access and there is an allocated parking space which is protected by a gated entrance. The apartment is also positioned at the rear of the development overlooking the communal garden, proving a quiet rear aspect of the building.

Viewings are strongly advised to appreciate this modern apartment.

Directions

WA14 1HP



- Leasehold - 979 Years
- £0 Ground Rent
- £170 pcm Service Charge
- One Allocated Parking Space - Gated
- Balcony
- South Facing Aspect
- Two Bedrooms
- Two Bathrooms
- Walking Distance to Altrincham Town Centre

Postcode - WA14 1HP
EPC Rating - C
Floor Area - 602.00 sq ft
Local Authority - Trafford
Council Tax - C

