

Longley Crescent, Birmingham, B26 1EN

£120,000

🛏️ 2 🚿 1 🚗 1



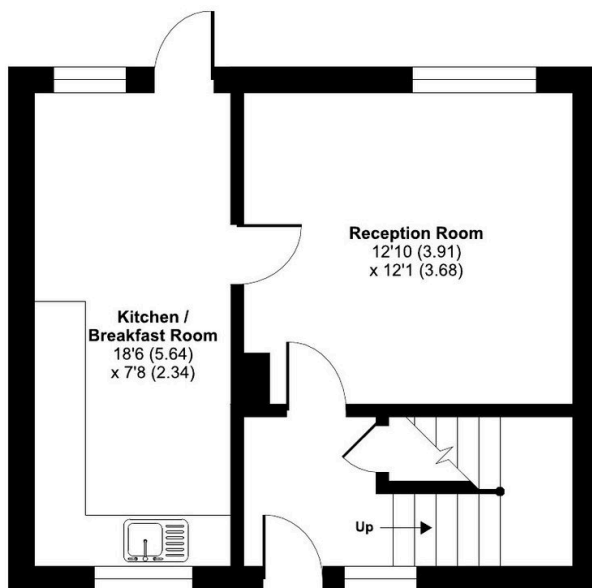
A fantastic opportunity to acquire a two double bedroom mid-terrace home in a popular residential location. Requiring modernisation throughout, this property offers excellent potential for buyers looking to add value and create a home tailored to their own taste. Ideal for first-time buyers, investors, or renovators

Key Features

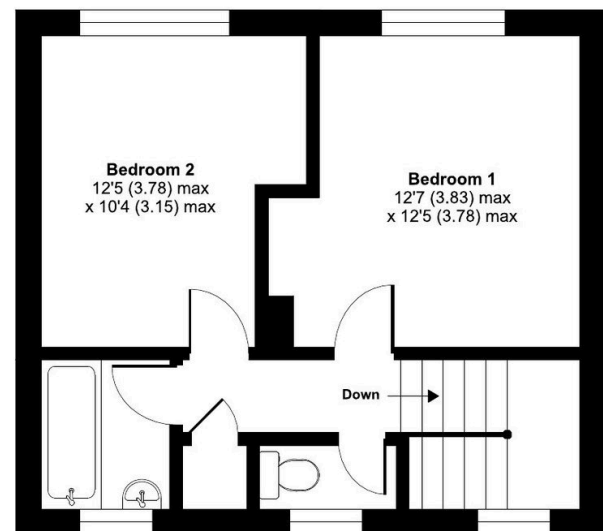
- Ideal investment / refurbishment project
- Kitchen/breakfast room
- Generous back garden
- No onward chain
- High demand expected
- Two double bedrooms
- Spacious layout
- Popular and convenient location
- Excellent transport links
- Please quote reference TT0480

Longley Crescent, Birmingham, B26

Approximate Area = 778 sq ft / 72.3 sq m
For identification only - Not to scale



GROUND FLOOR



FIRST FLOOR

 Floor plan produced in accordance with RICS Property Measurement Standards incorporating International Property Measurement Standards (IPMS2 Residential). © nlichecom 2025. Produced for Trevor Taylor (eXp). REF: 1428799