



Apartment 13 Golding House Henry Avenue

, Matlock, DE4 3FL

£135,000



Apartment 13 Golding

, Matlock, DE4 3FL

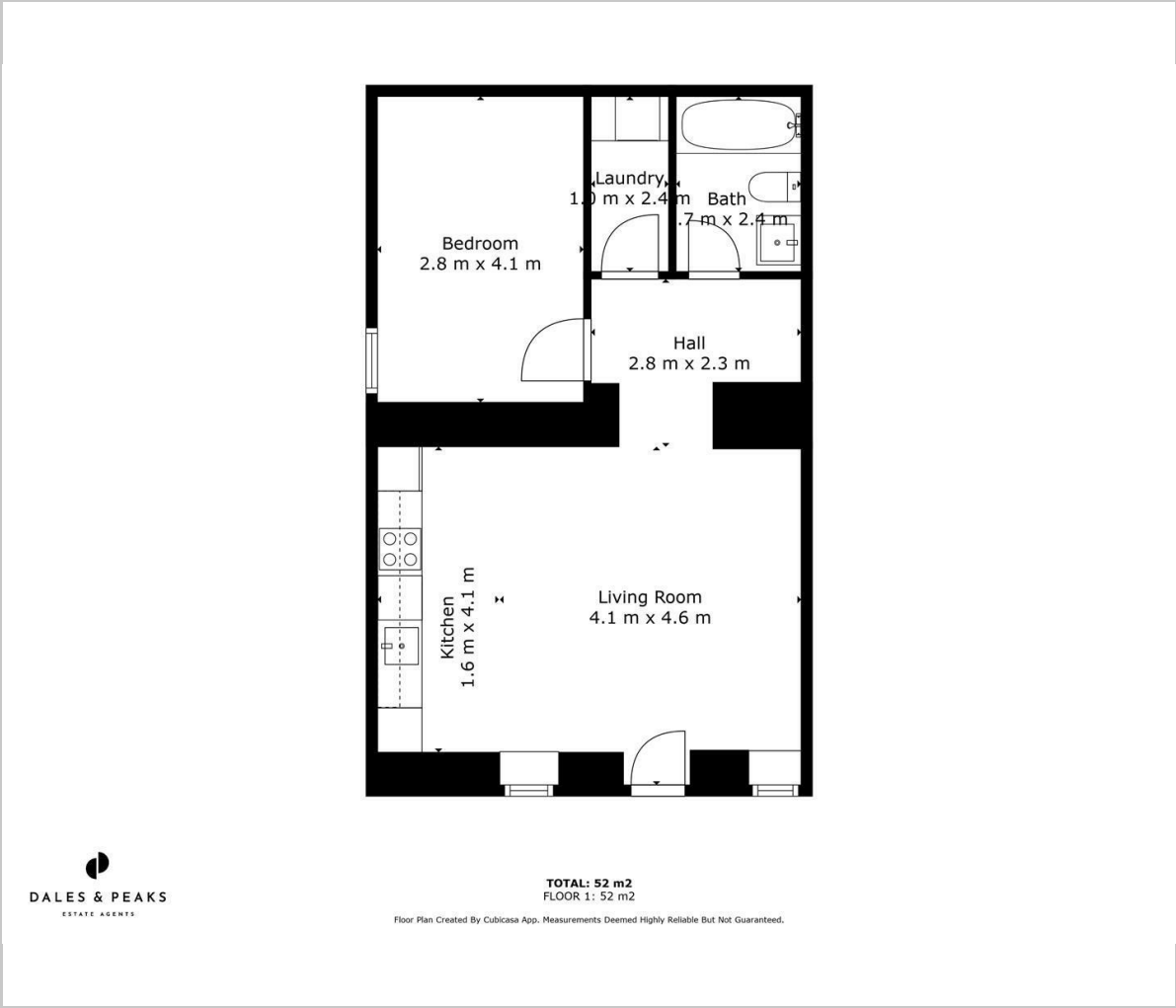
A newly converted one bedroom lower ground floor apartment, situated just a stones throw from the centre of Matlock Town Centre. Offering a 559 sqft of living accommodation the apartment comprises; Modern kitchen with all new integrated appliances, open plan with the living and dining space, double bedroom and bathroom. The property also benefits from an allocated parking space and communal gardens off New Street.

6 year build warranty
Length of lease; 999 years with a share of freehold
Ground rent; NIL
Service charge; £1080 per annum





Floor Plan

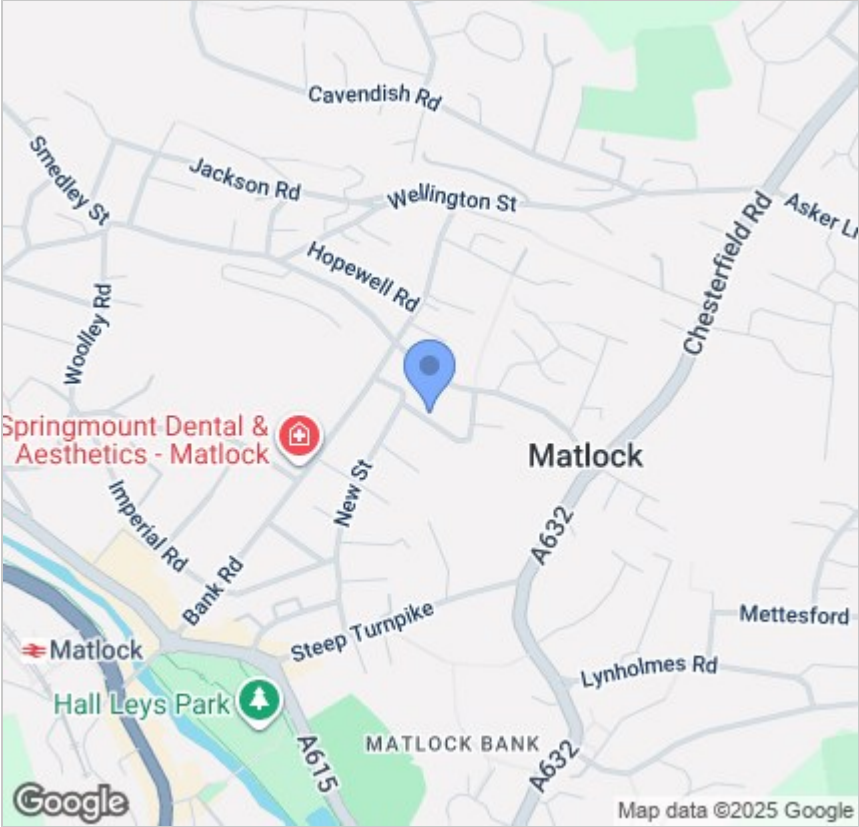


Viewing

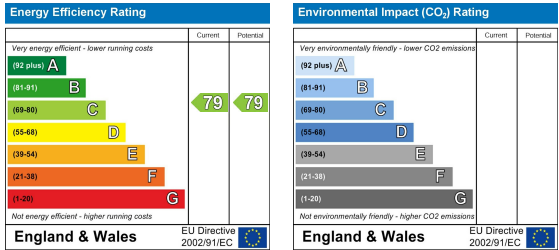
Please contact our Matlock Office on 01629 700246 if you wish to arrange a viewing appointment for this property or require further information.

These particulars, whilst believed to be accurate are set out as a general outline only for guidance and do not constitute any part of an offer or contract. Intending purchasers should not rely on them as statements of representation of fact, but must satisfy themselves by inspection or otherwise as to their accuracy. No person in this firms employment has the authority to make or give any representation or warranty in respect of the property.

Area Map



Energy Efficiency Graph



2 Dale Road, Matlock, Derbyshire, DE4 3LT
T: 01629 700246



E: info@dalesandpeaks.co.uk
www.dalesandpeaks.co.uk